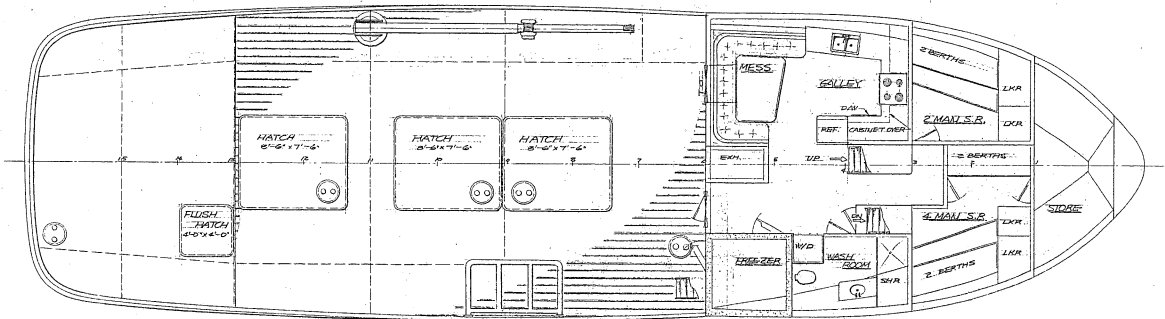
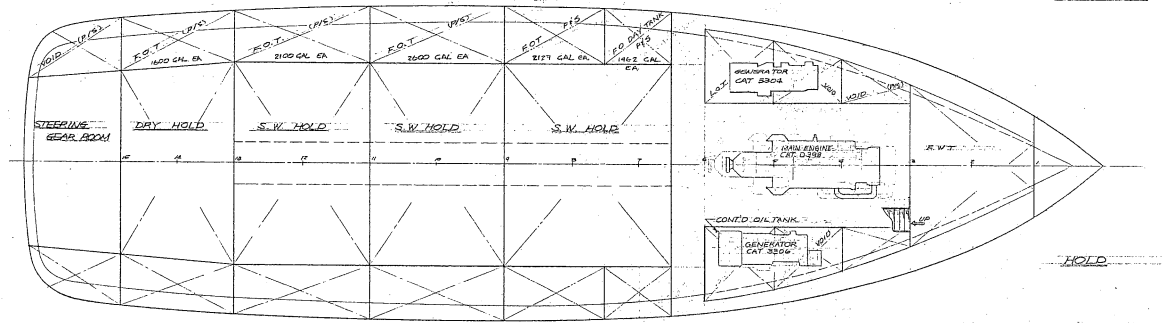


FOC SLE & BRIDGE DK



MAIN DECK



HOLD

Exhibit 199  
32a of 36

SYM	REVISIONS	BY	DATE
FOR: <u>TONY BERAN</u>			
B.F. JENSEN & ASSOCIATES, INC., P.S. NAVAL ARCHITECTS & MARINE ENGINEERS 201 SALMON BAY OFFICE BLDG. SEATTLE, WA 98109			
TITLE: <u>92-FT. FISHING VESSEL</u> <u>GENERAL ARRANGEMENT</u>			
DWN. T.C.	DATE: 6/27/70	DWG. NO.	REV.
CKD	DATE: 7/1/70	A198-0201	
APP.	DATE:		
SCALE: 1/4" = 1'-0"	SHT. OF		