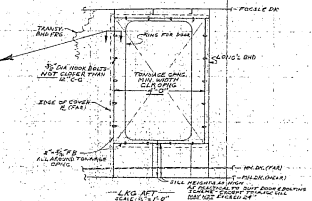
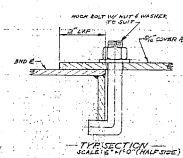
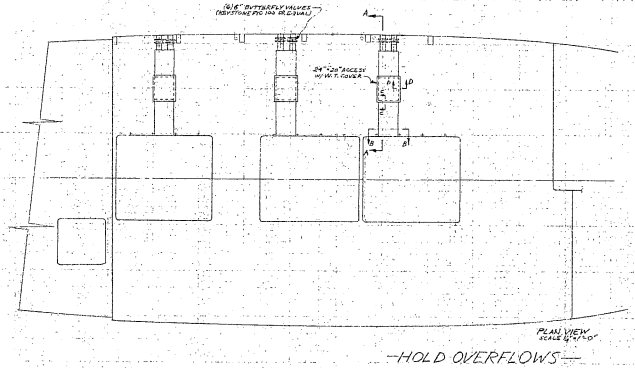


SW. CIRC. PUMP SUPPORTS



TONNAGE OPENING

BY JENSEN & ASSOCIATES
JUN 365 - 32' 7 1/2"
11/11/74

Exhibit 199
Page 27a of 36

REV	REVISIONS	BY	DATE
01	B. F. JENSEN & ASSOCIATES		
101 SALMON BAY OFFICE BLDG. 4015 151st AVE. WEST SEATTLE, WASHINGTON 98149			
92 FT FISHING VESSEL MISC. DETAILS			
CHECKED: SCALE: AS NOTED DRAWN:	DATE: NOV 1974 DWG. NO: 365-26		