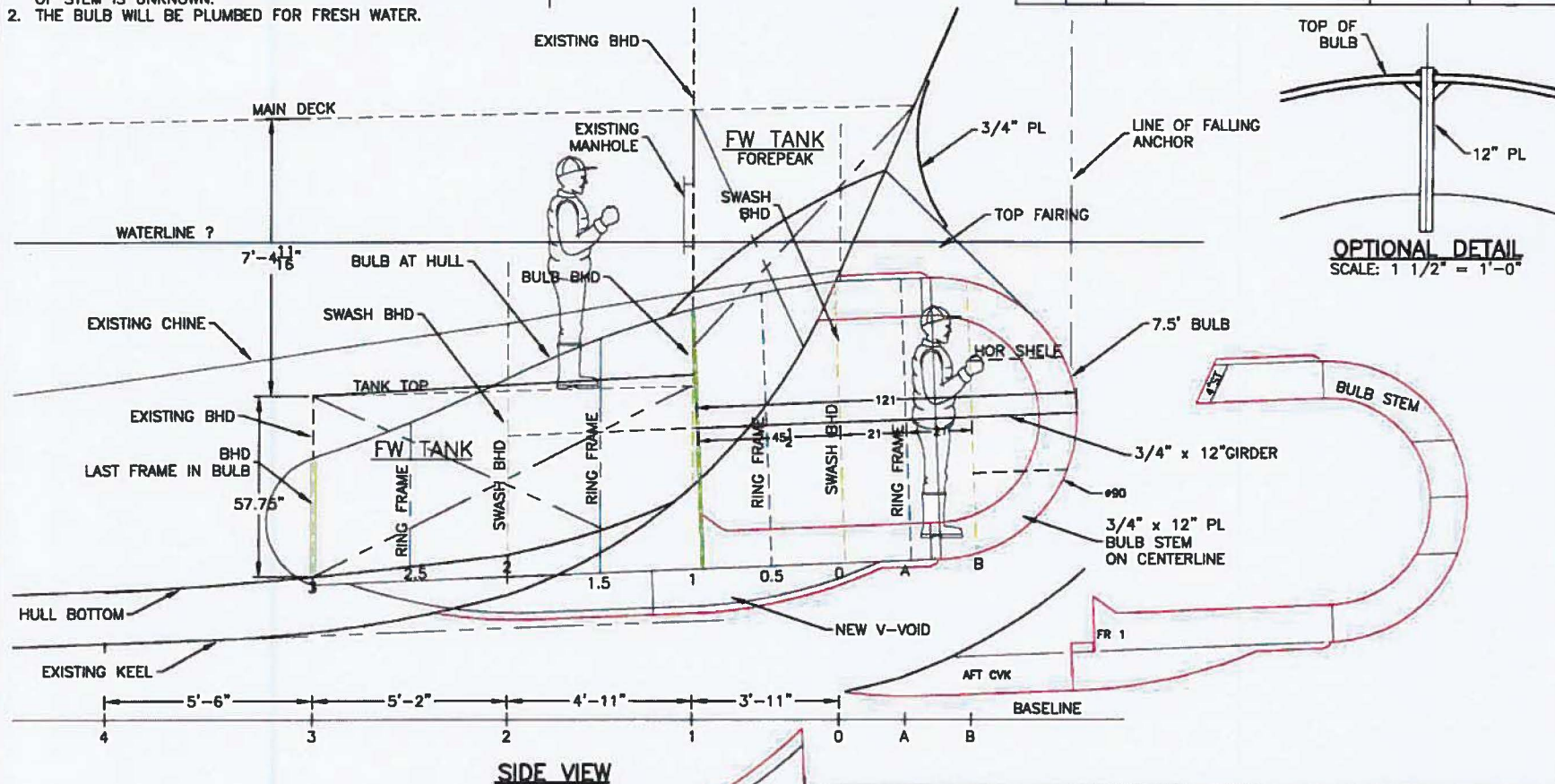


GENERAL NOTES:

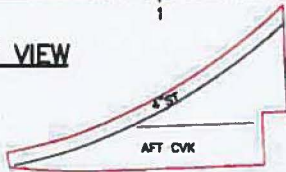
1. THE BOTTOM OF THE ROUND BULB IS ALIGNED WITH HULL BOTTOM RAKE. THE V-VOID IS ADDED UNDER THAT. A TOP FAIRING IS ADDED AFTER BULB IS IN PLACE. THE EXACT SHAPE OF STEM IS UNKNOWN.
2. THE BULB WILL BE PLUMBED FOR FRESH WATER.

REVISIONS

ZONE	REV	DESCRIPTION	DATE	APPROVED
-	-	-	-	-



SIDE VIEW



(SWASH BHD = NON-TIGHT)

KRAFTMAR
DESIGN SERVICES
Naval Architects/Engineers
4241 21st AVE W, #300
SEATTLE, WA 98199
Phone: (206) 718-1845

PROJECT/VESSEL: **F/V DESTINATION**

TITLE: **BULBOUS BOW**

REV: -

DWG BY: GO/RM	DATE: 10/03/2012	DWG NO: DEST-BULB-2	REV DATE:
CHK BY: -	SCALE: 3/8" = 1'-0"	COMP FILE: bulbstruct.dwg	SHEET: 1 of 4