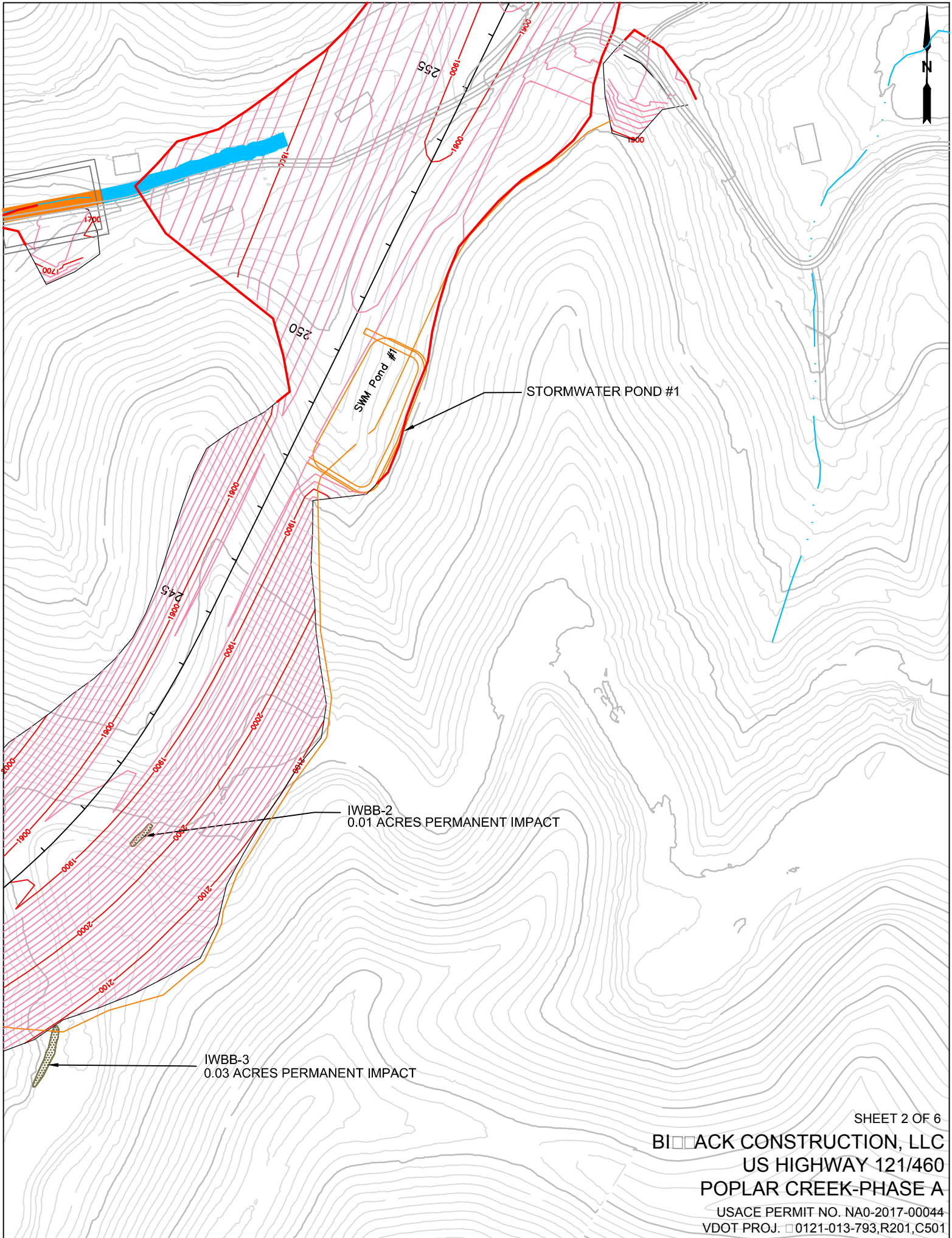


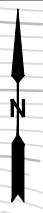
SHEET 1 OF 6  
BLACK CONSTRUCTION, LLC  
US HIGHWAY 460/121  
POPLAR CREEK-PHASE A  
USACE PERMIT NO. NA0-2017-00044  
VDOT PROJ. 0121-013-793,R201,C501



SHEET 2 OF 6

BLACK CONSTRUCTION, LLC  
US HIGHWAY 121/460  
POPLAR CREEK-PHASE A

USACE PERMIT NO. NA0-2017-00044  
VDOT PROJ. 0121-013-793,R201,C501



ROAD EMBANKMENT NO.1

BELCHER BRANCH  
340 LFT. PERMANENT IMPACT

SEDIMENT BASIN 1  
190 LFT. TEMPORARY IMPACT

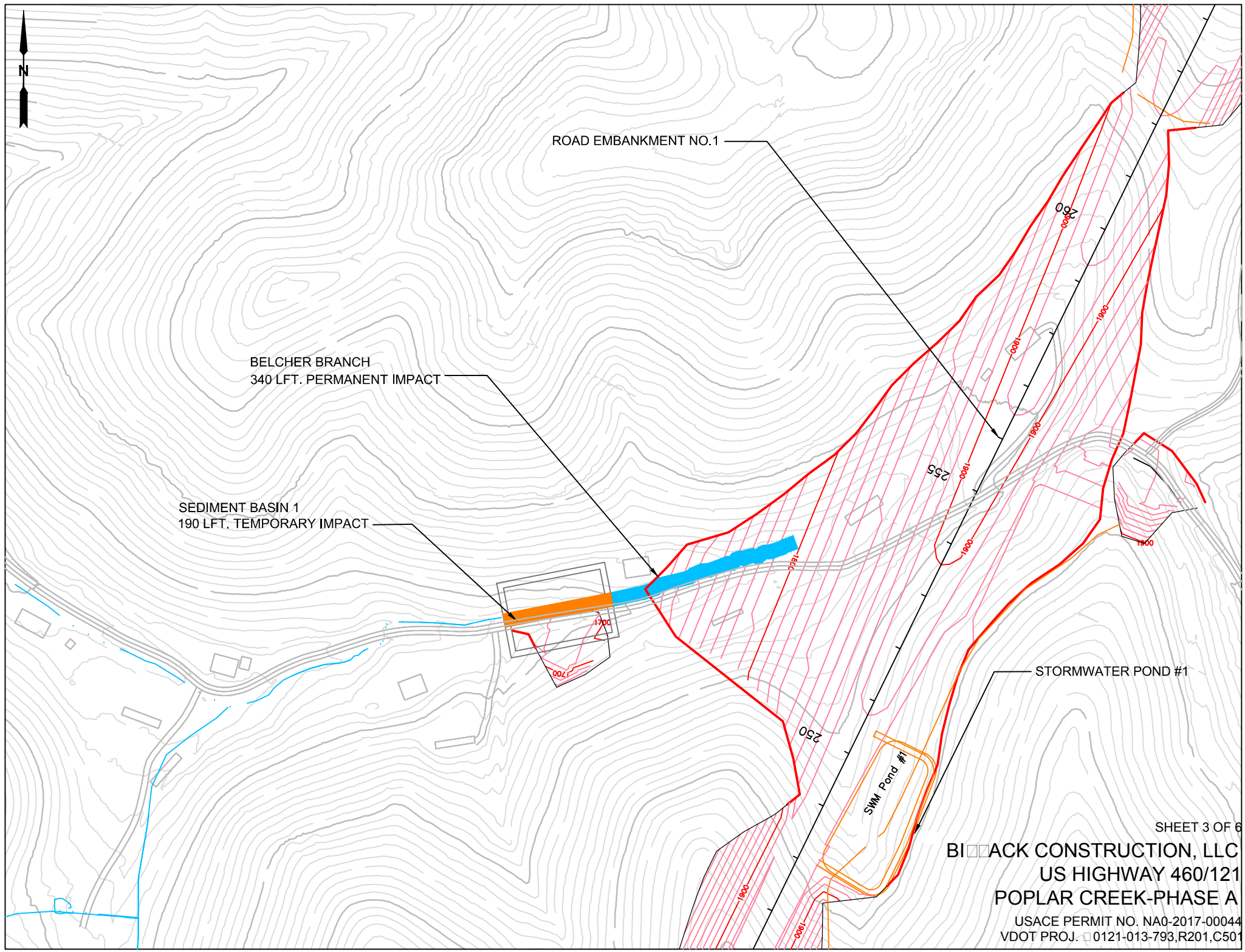
STORMWATER POND #1

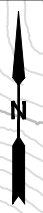
SWM Pond #1

SHEET 3 OF 6

BLACK CONSTRUCTION, LLC  
US HIGHWAY 460/121  
POPLAR CREEK-PHASE A

USACE PERMIT NO. NA0-2017-00044  
VDOT PROJ. 0121-013-793.R201.C501





AWCH-2 0.22 ACRES  
TEMPORARY IMPACT

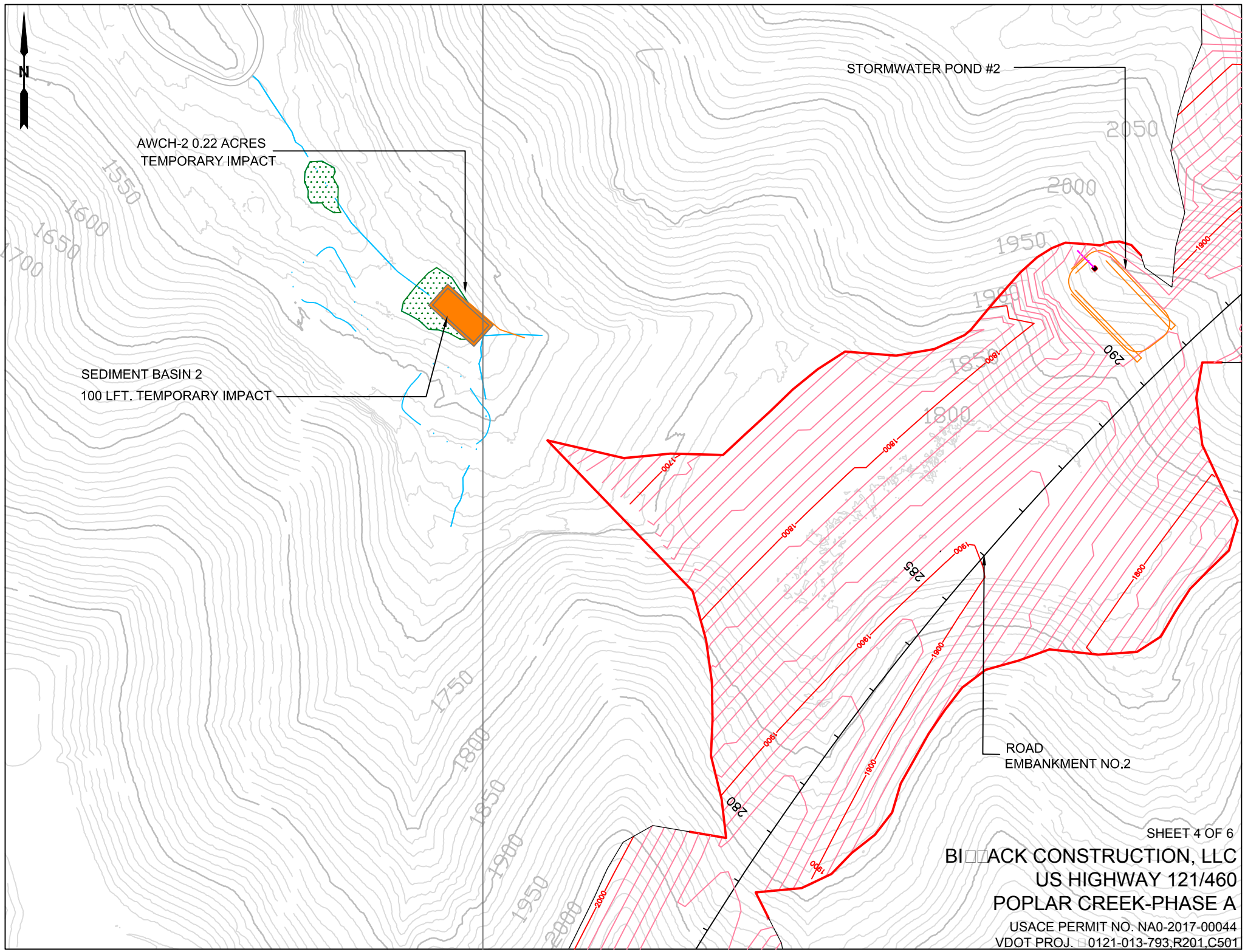
SEDIMENT BASIN 2  
100 LFT. TEMPORARY IMPACT

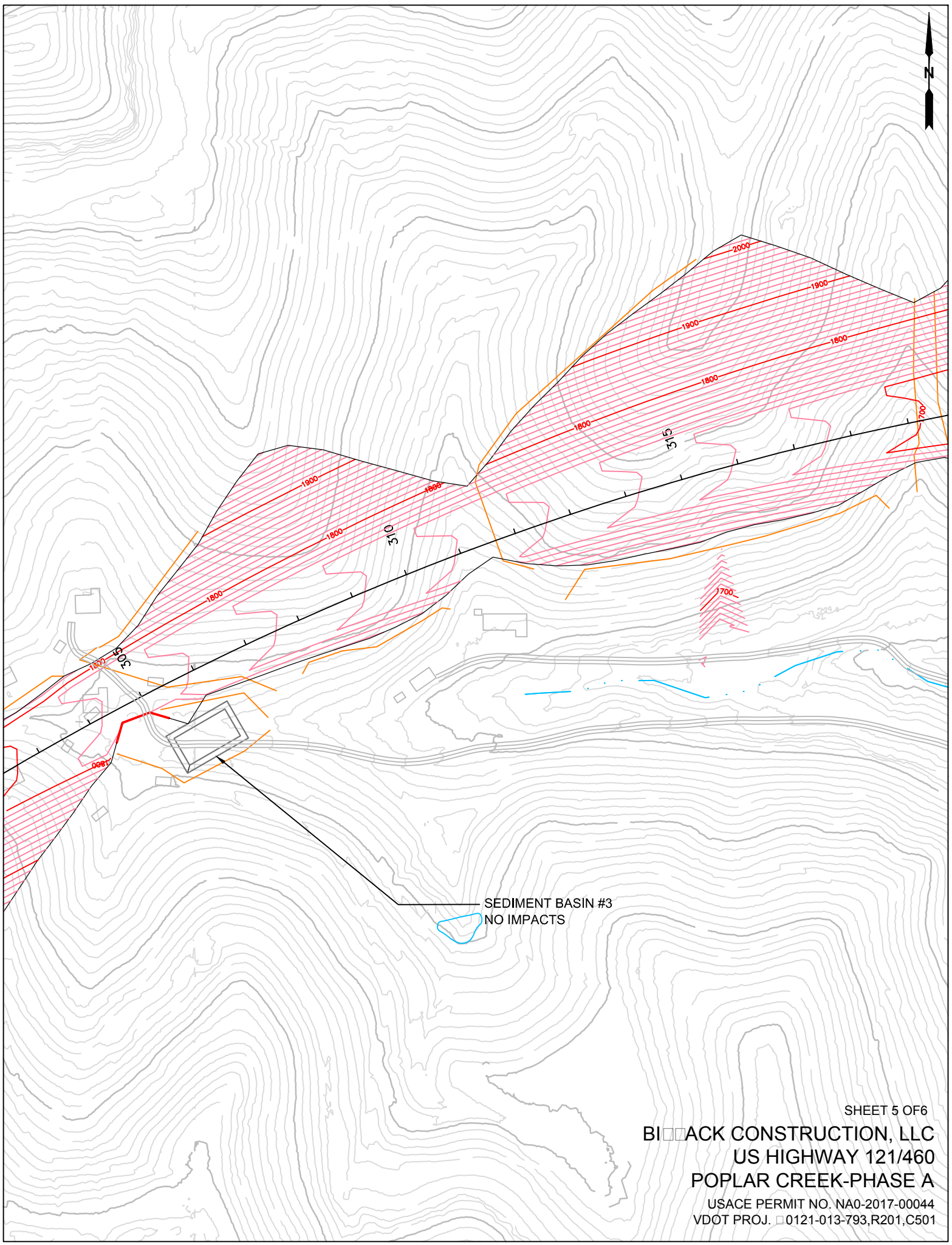
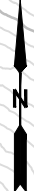
STORMWATER POND #2

ROAD  
EMBANKMENT NO.2

SHEET 4 OF 6  
BLACK CONSTRUCTION, LLC  
US HIGHWAY 121/460  
POPLAR CREEK-PHASE A

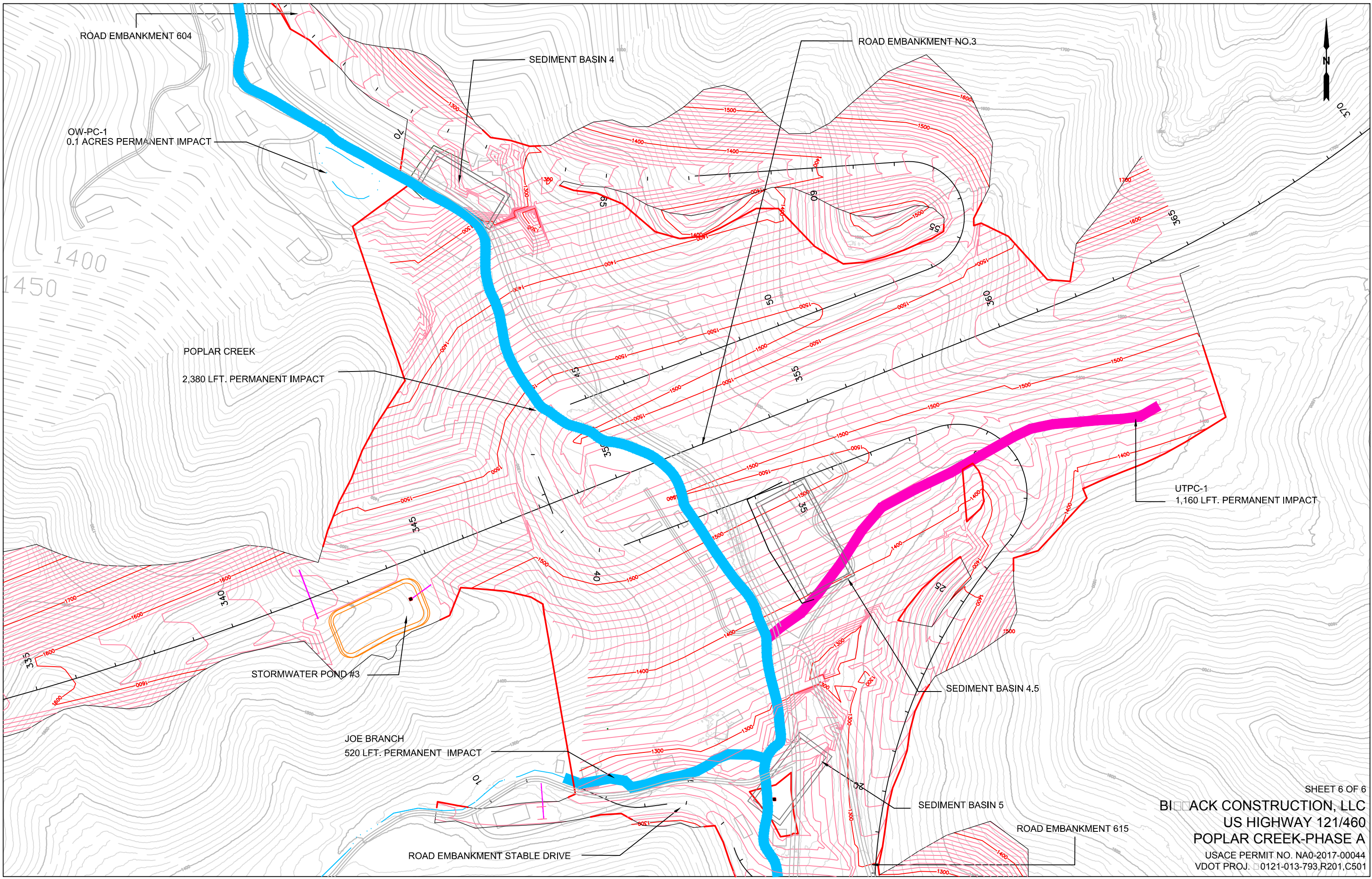
USACE PERMIT NO. NA0-2017-00044  
VDOT PROJ. 0121-013-793,R201,C501





SEDIMENT BASIN #3  
NO IMPACTS

SHEET 5 OF 6  
**BLACK CONSTRUCTION, LLC**  
**US HIGHWAY 121/460**  
**POPLAR CREEK-PHASE A**  
USACE PERMIT NO. NAO-2017-00044  
VDOT PROJ. 0121-013-793,R201,C501



ROAD EMBANKMENT 604

SEDIMENT BASIN 4

ROAD EMBANKMENT NO.3

OW-PC-1  
0.1 ACRES PERMANENT IMPACT

POPLAR CREEK  
2,380 LFT. PERMANENT IMPACT

UTPC-1  
1,160 LFT. PERMANENT IMPACT

STORMWATER POND #3

JOE BRANCH  
520 LFT. PERMANENT IMPACT

SEDIMENT BASIN 4.5

SEDIMENT BASIN 5

ROAD EMBANKMENT 615

ROAD EMBANKMENT STABLE DRIVE

SHEET 6 OF 6

**BLACK CONSTRUCTION, LLC**  
US HIGHWAY 121/460  
POPLAR CREEK-PHASE A

USACE PERMIT NO. NA0-2017-00044  
VDOT PROJ. 0121-013-793,R201,C501