

Legend

- Project Study Limits - 141.3 acres
- Limits of Disturbance - 59.6 Acres
- Impact Detail Sheets
- Stream Impact
- Wetland Impact
- Proposed Stream Relocation
- Flow Line
- Proposed Storm Pipe
- Proposed Storm Structure
- Proposed Ditch
- Temporary Stream/Ditch Impact
- Permanent Stream/Ditch Impact
- Culvert
- Perennial Stream (R3)
- Intermittent Stream (R4)
- Ditch
- Proposed Rip Rap
- Permanent Wetland Impact
- Temporary Wetland Impact
- Palustrine Emergent (PEM) Wetland
- Palustrine Forested (PFO) Wetland
- Palustrine Open Water

NOTES:

1. WATERS OF THE U.S. WITHIN THE PROJECT STUDY LIMITS HAVE BEEN GPS LOCATED BY TIMMONS GROUP.
2. PORTIONS OF WATERS OF THE U.S. HAVE BEEN CONFIRMED BY THE U.S. ARMY CORPS OF ENGINEERS IN A LETTER DATED 1/27/2014.
3. PROJECT STUDY LIMITS ARE APPROXIMATE.
4. TOPOGRAPHY BASED ON USGS LIDAR DATA.
5. COWARDIN STREAM CLASSIFICATIONS ARE BASED SOLELY ON FIELD OBSERVATIONS. NO FORMAL STREAM ASSESSMENT METHODOLOGY WAS COMPLETED TO DETERMINE THESE COWARDIN CLASSIFICATIONS.

Road Widening Impacts Table								
Impact ID	Wetland (sq. ft)			Stream (lf)		Ditch (lf)	Ditch (lf)	Plan Sheet #
	Permanent Impact			Impact		Impact		
	PFO	PEM	POW	Temporary	Permanent	Temporary	Permanent	
1	3262							11
1A	1792							11
2							46	11
3							92	11
4		242						11
5	1027							13
6	527							13
7						367		13,14
8		184						14
8A				591				14
9					46			14
*10	1396							15
11	2001							15
12					100			15
13			3384					17
*14					140			18
15	176	1137						22
16	1016							28
*17		565						28
*18	1286							28
19	401							29
*20	3913							29
21	2432							29
22					15			30
*23	3464							30
24					203			31
25	197							31
*26		1275						31
*27	2755							31
*28					59			31
29	4369							32
*30	481							35,36
*31		408						35,36
32	1527							35,36
33							217	36,37
34		957						36,37
35	6357							36,37
36					124			36,37
37				60				36,37
38	198							36,37
39				37				
40				41				
41					382			
Total	38,577 sq ft 0.89 ac	4,768 sq ft 0.11 ac	3,384 sq ft 0.08 ac	729 lf	1,069 lf	367 lf	355 lf	

* Areas cleared and/or temporarily disturbed to accommodate overhead utility line relocation.

TIMMONS GROUP



YOUR VISION ACHIEVED THROUGH OURS

THIS DRAWING PREPARED AT THE CORPORATE OFFICE
1001 Boulders Parkway, Suite 300 | Richmond, VA 23225
TEL 804.200.6500 FAX 804.560.1648 www.timmons.com

Site Development | Residential | Infrastructure | Technology | Environmental

WOOLRIDGE / OTTERDALE ROAD WIDENING
CHESTERFIELD COUNTY, VIRGINIA

PRELIMINARY JURISDICTIONAL WATERS OF THE U.S. IMPACTS MAP -NOTES

SCALE N/A

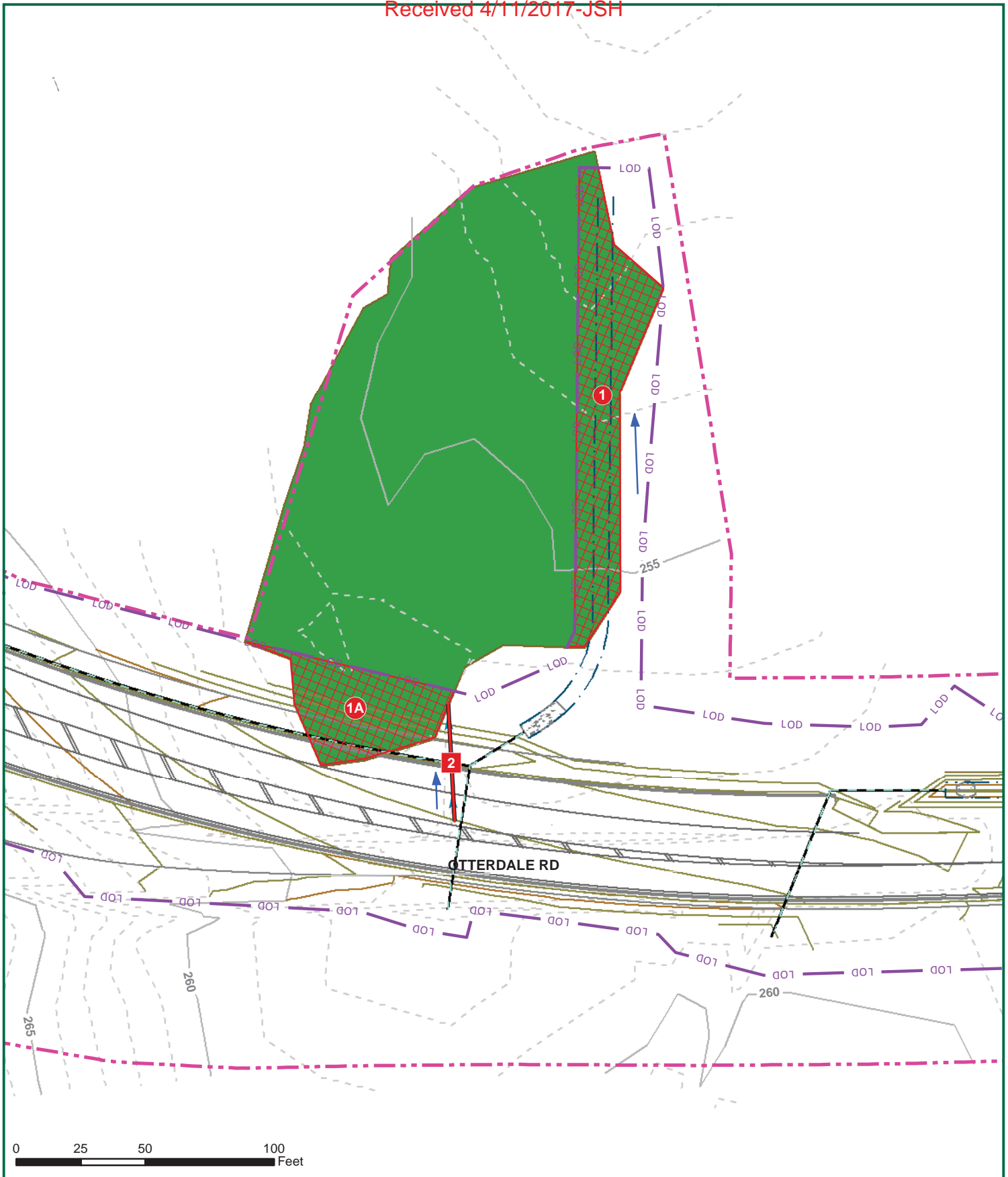
CHECKED BY T. PREUNINGER

DESIGNED BY B. MORRIS

DRAWN BY E. MORRIS

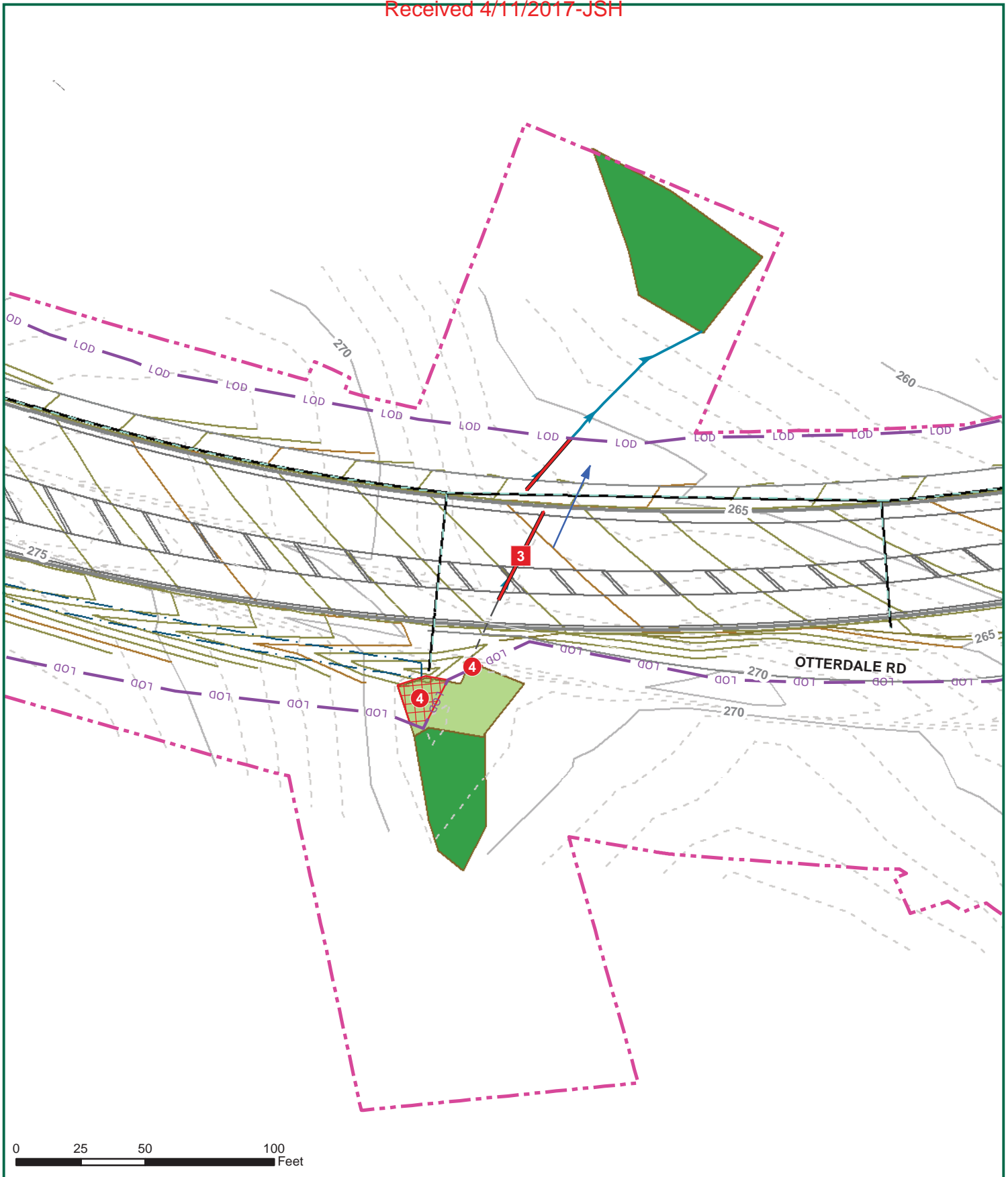
DATE 02/10/2017

DATE	REVISION DESCRIPTION
03/03/17	Impacts revised per DEQ comments.



<h1>TIMMONS GROUP</h1>		YOUR VISION ACHIEVED THROUGH OURS		THIS DRAWING PREPARED AT THE CORPORATE OFFICE 1001 Boulders Parkway, Suite 300 Richmond, VA 23225 TEL 804.200.6500 FAX 804.560.1648 www.timmons.com	
		Site Development Residential Infrastructure Technology Environmental			
WOOLRIDGE / OTTERDALE ROAD WIDENING CHESTERFIELD COUNTY, VIRGINIA		DATE 03/03/17	REVISION DESCRIPTION Impacts revised per DEQ comments.		
JOB NUMBER 26259	SHEET NO. 3 of 23	DRAWN BY E. MORRIS	DATE 02/02/017		
PRELIMINARY JURISDICTIONAL WATERS OF THE U.S. IMPACTS MAP - DETAIL		CHECKED BY J. BROOKS	DESIGNED BY E. MORRIS		
		SCALE 1" = 50'			

These plans and associated documents are the exclusive property of TIMMONS GROUP and may not be reproduced in whole or in part and shall not be used for any purpose whatsoever, inclusive, but not limited to construction, bidding, and/or construction staking without the express written consent of TIMMONS GROUP.



TIMMONS GROUP

YOUR VISION ACHIEVED THROUGH OURS

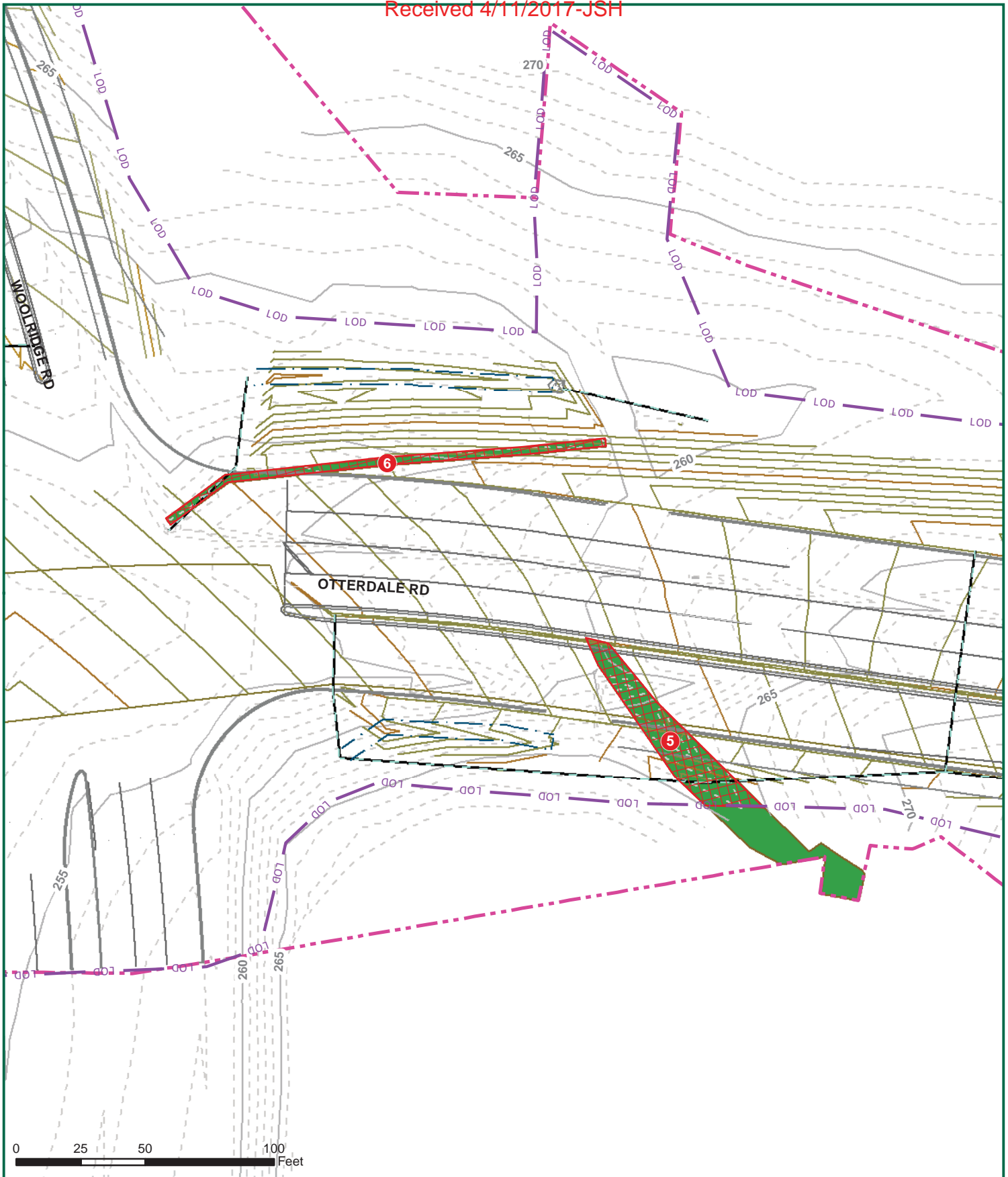
Site Development | Residential | Infrastructure | Technology | Environmental

THIS DRAWING PREPARED AT THE CORPORATE OFFICE
1001 Boulders Parkway, Suite 300 | Richmond, VA 23225
TEL 804.200.6500 FAX 804.560.1648 www.timmons.com

WOOLRIDGE / OTTERDALE ROAD WIDENING CHESTERFIELD COUNTY, VIRGINIA	PRELIMINARY JURISDICTIONAL WATERS OF THE U.S. IMPACTS MAP - DETAIL	SCALE 1" = 50'	CHECKED BY J. BROOKS	DESIGNED BY B. MORRIS	DRAWN BY B. MORRIS	DATE	REVISION DESCRIPTION
						02/10/2017	03/03/17

JOB NUMBER
26259

SHEET NO.
4 of 23



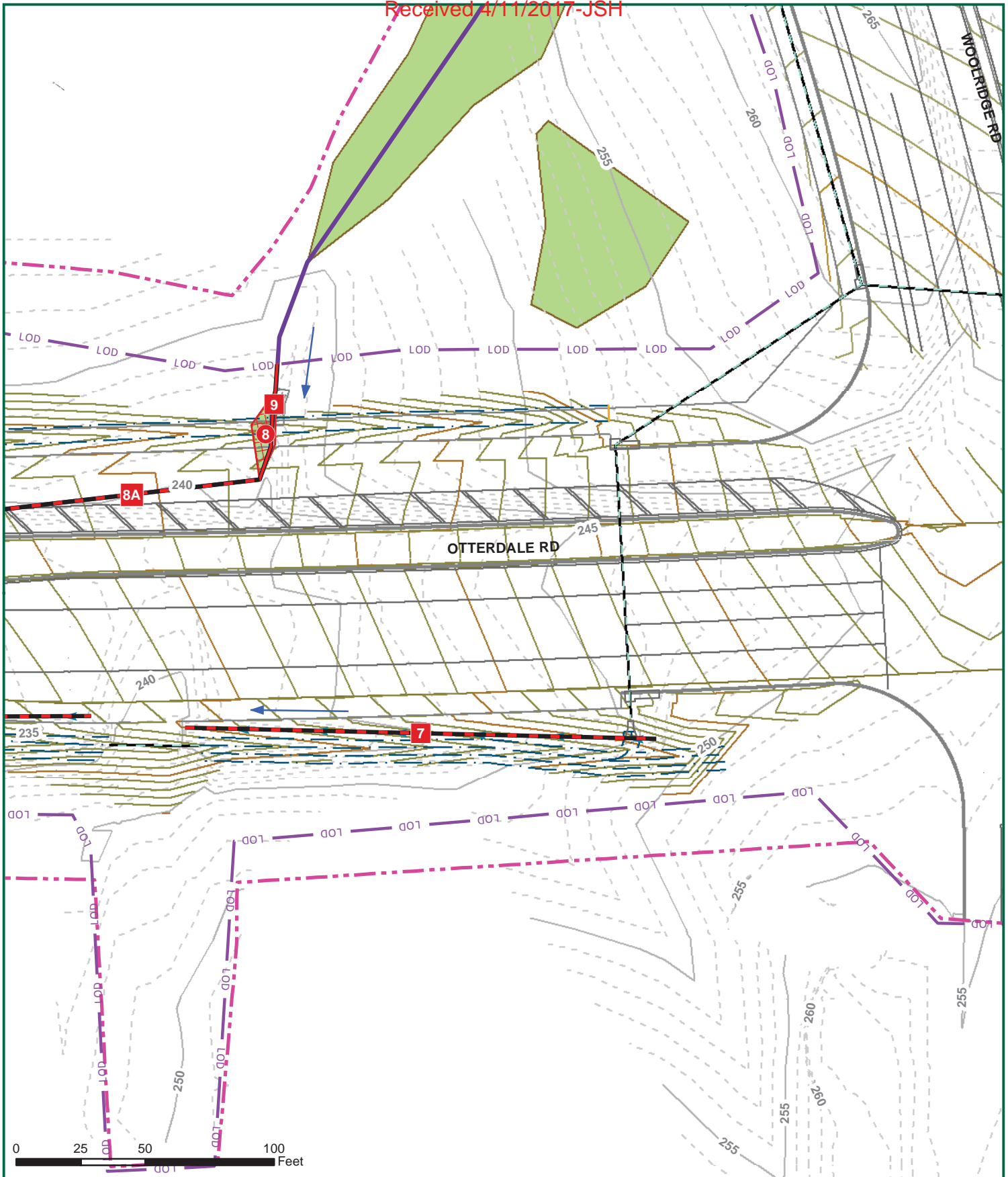
TIMMONS GROUP



YOUR VISION ACHIEVED THROUGH OURS
 THIS DRAWING PREPARED AT THE CORPORATE OFFICE
 1001 Boulders Parkway, Suite 300 | Richmond, VA 23225
 TEL 804.200.6500 FAX 804.560.1648 www.timmons.com
 Site Development | Residential | Infrastructure | Technology | Environmental

JOB NUMBER 26259	SHEET NO. 5 of 23	WOOLRIDGE / OTTERDALE ROAD WIDENING CHESTERFIELD COUNTY, VIRGINIA PRELIMINARY JURISDICTIONAL WATERS OF THE U.S. IMPACTS MAP - DETAIL	SCALE 1"=50'	CHECKED BY J. BROOKS	DESIGNED BY B. MORRIS	DRAWN BY B. MORRIS	DATE 02/10/2017	REVISION DESCRIPTION
							DATE 03/03/17	Impacts revised per DEQ comments.

These plans and associated documents are the exclusive property of TIMMONS GROUP and may not be reproduced in whole or in part and shall not be used for any purpose whatsoever, inclusive, but not limited to construction, bidding, and/or construction staking without the express written consent of TIMMONS GROUP.



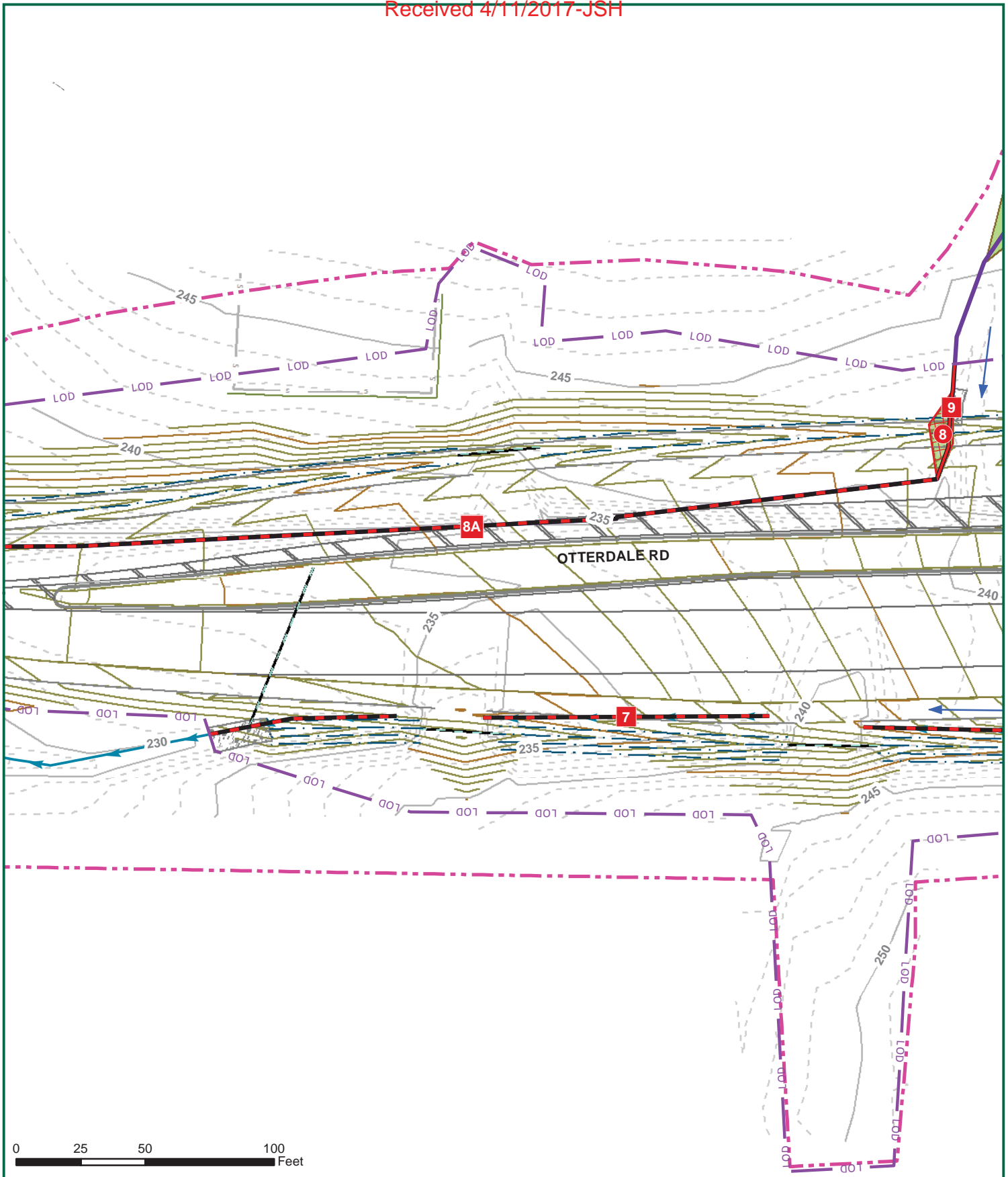
TIMMONS GROUP



YOUR VISION ACHIEVED THROUGH OURS
 THIS DRAWING PREPARED AT THE CORPORATE OFFICE
 1001 Boulders Parkway, Suite 300 | Richmond, VA 23225
 TEL 804.200.6500 FAX 804.560.1648 www.timmons.com
 Site Development | Residential | Infrastructure | Technology | Environmental

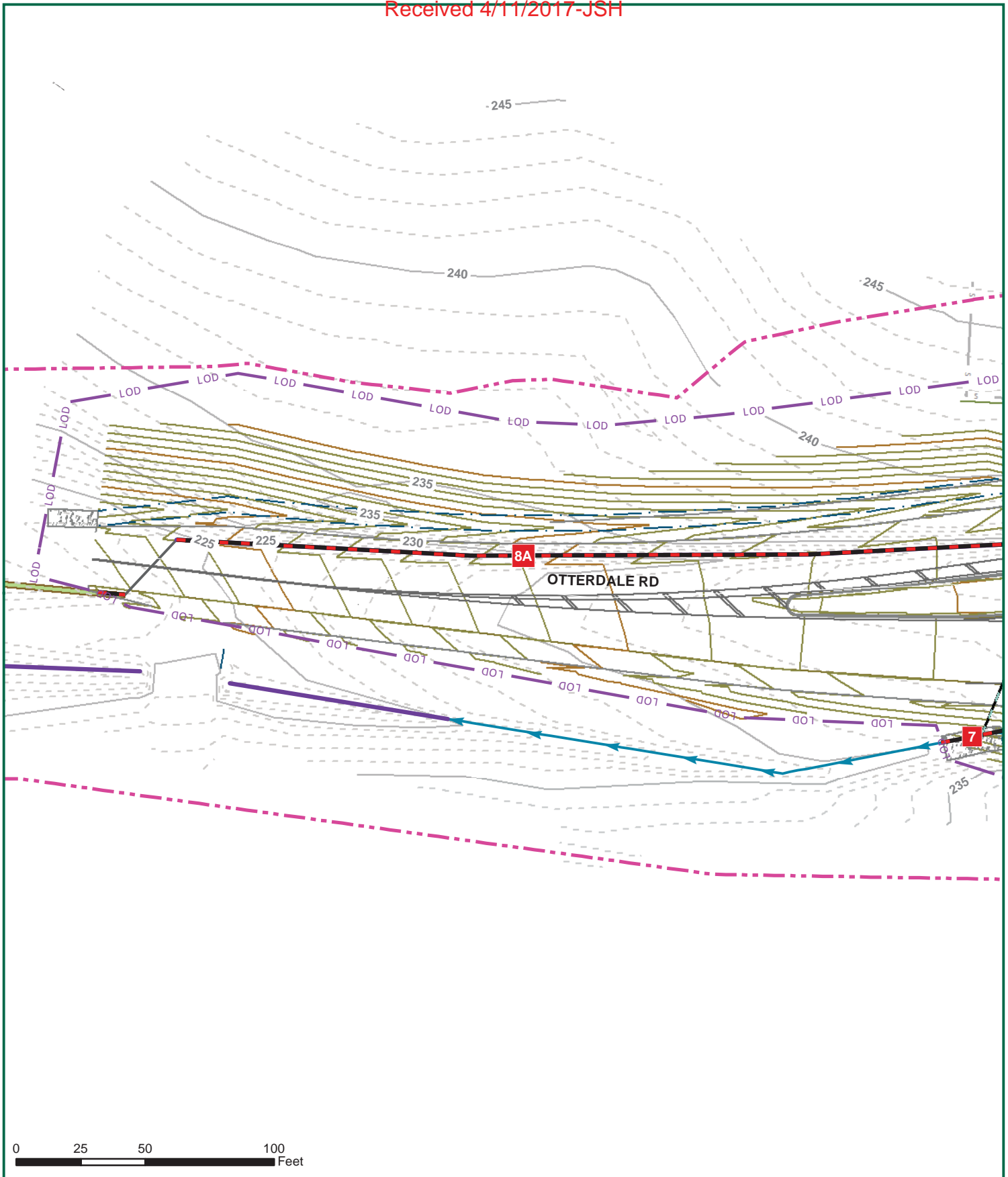
JOB NUMBER 26259	SHEET NO. 6 of 23	WOOLRIDGE / OTTERDALE ROAD WIDENING CHESTERFIELD COUNTY, VIRGINIA PRELIMINARY JURISDICTIONAL WATERS OF THE U.S. IMPACTS MAP - DETAIL	SCALE 1" = 50'	CHECKED BY J. BROOKS	DESIGNED BY B. MORRIS	DRAWN BY B. MORRIS	DATE 02/10/2017	REVISION DESCRIPTION
							DATE 03/03/17	Impacts revised per DEQ comments.

These plans and associated documents are the exclusive property of TIMMONS GROUP and may not be reproduced in whole or in part and shall not be used for any purpose whatsoever, inclusive, but not limited to construction, bidding, and/or construction staking without the express written consent of TIMMONS GROUP.



<h1>TIMMONS GROUP</h1>		YOUR VISION ACHIEVED THROUGH OURS		THIS DRAWING PREPARED AT THE CORPORATE OFFICE 1001 Boulders Parkway, Suite 300 Richmond, VA 23225 TEL 804.200.6500 FAX 804.560.1648 www.timmons.com	
		Site Development Residential Infrastructure Technology Environmental			
JOB NUMBER 26259	WOOLRIDGE / OTTERDALE ROAD WIDENING CHESTERFIELD COUNTY, VIRGINIA			DATE	REVISION DESCRIPTION
	PRELIMINARY JURISDICTIONAL WATERS OF THE U.S. IMPACTS MAP - DETAIL			03/03/17	Impacts revised per DEQ comments.
SHEET NO. 7 of 23	SCALE 1" = 50'	CHECKED BY J. BROOKS	DESIGNED BY B. MORRIS	DRAWN BY E. MORRIS	DATE 02/10/2017

These plans and associated documents are the exclusive property of TIMMONS GROUP and may not be reproduced in whole or in part and shall not be used for any purpose whatsoever, inclusive, but not limited to construction, bidding, and/or construction staking without the express written consent of TIMMONS GROUP.



TIMMONS GROUP

YOUR VISION ACHIEVED THROUGH OURS

THIS DRAWING PREPARED AT THE CORPORATE OFFICE
1001 Boulders Parkway, Suite 300 | Richmond, VA 23225
TEL 804.200.6500 FAX 804.560.1648 www.timmons.com

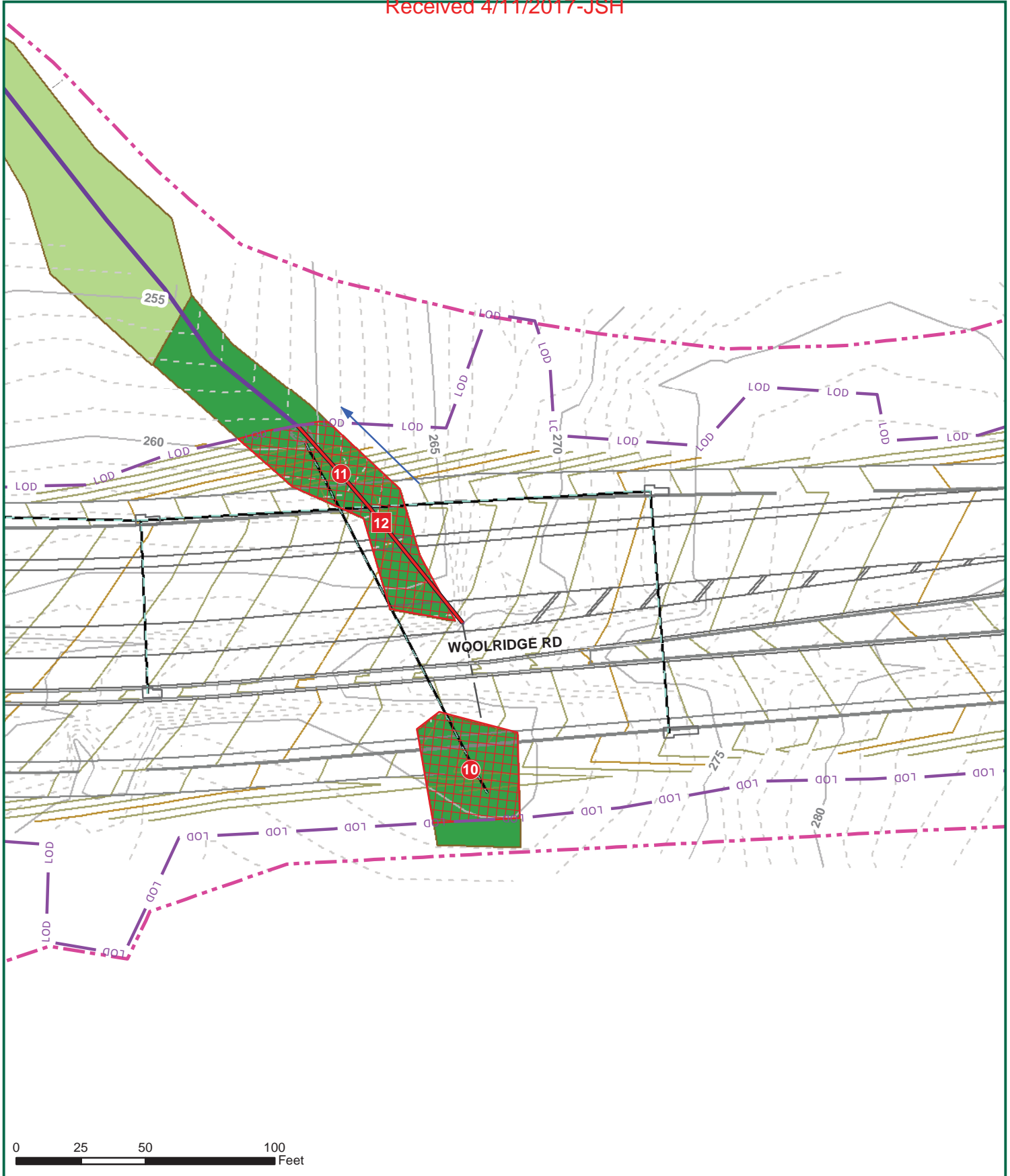
Site Development | Residential | Infrastructure | Technology | Environmental

WOOLRIDGE / OTTERDALE ROAD WIDENING CHESTERFIELD COUNTY, VIRGINIA	SCALE 1" = 50'	CHECKED BY J. BROOKS	DESIGNED BY B. MORRIS	DRAWN BY E. MORRIS	DATE 02/10/2017	REVISION DESCRIPTION
					DATE 03/03/17	Impacts revised per DEQ comments.

JOB NUMBER
26259

SHEET NO.
8 of 23

PRELIMINARY JURISDICTIONAL WATERS OF THE U.S. IMPACTS MAP - DETAIL



TIMMONS GROUP



YOUR VISION ACHIEVED THROUGH OURS

THIS DRAWING PREPARED AT THE CORPORATE OFFICE
1001 Boulders Parkway, Suite 300 | Richmond, VA 23225
TEL 804.200.6500 FAX 804.560.1648 www.timmons.com

Site Development | Residential | Infrastructure | Technology | Environmental

WOOLRIDGE / OTTERDALE ROAD WIDENING
CHESTERFIELD COUNTY, VIRGINIA

PRELIMINARY JURISDICTIONAL WATERS OF THE U.S. IMPACTS MAP - DETAIL

SCALE 1"=50'

CHECKED BY J. BROOKS

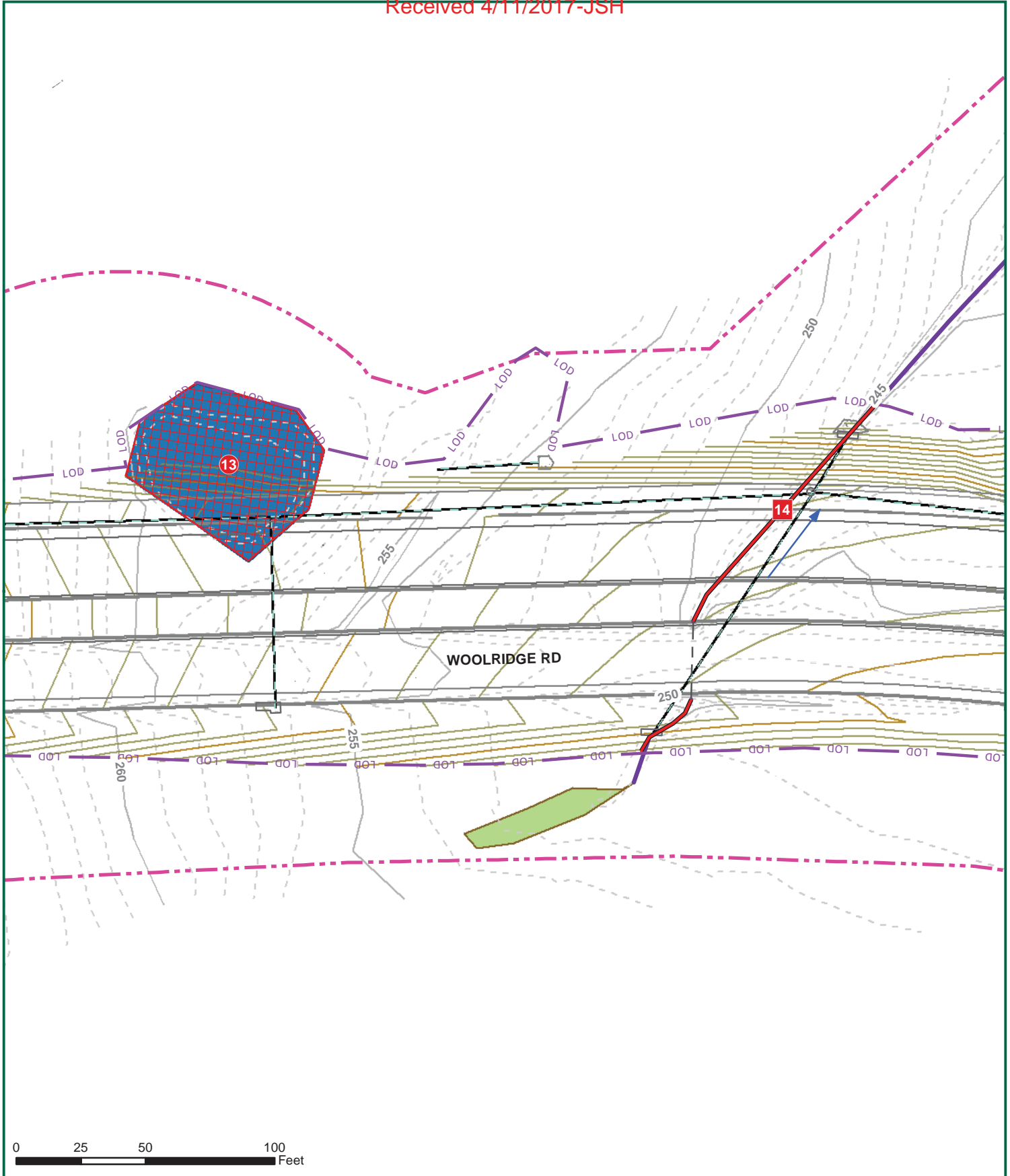
DESIGNED BY B. MORRIS

DRAWN BY E. MORRIS

DATE 02/10/2017

DATE	REVISION DESCRIPTION
03/03/17	Impacts revised per DEQ comments.

These plans and associated documents are the exclusive property of TIMMONS GROUP and may not be reproduced in whole or in part and shall not be used for any purpose whatsoever, inclusive, but not limited to construction, bidding, and/or construction staking without the express written consent of TIMMONS GROUP.



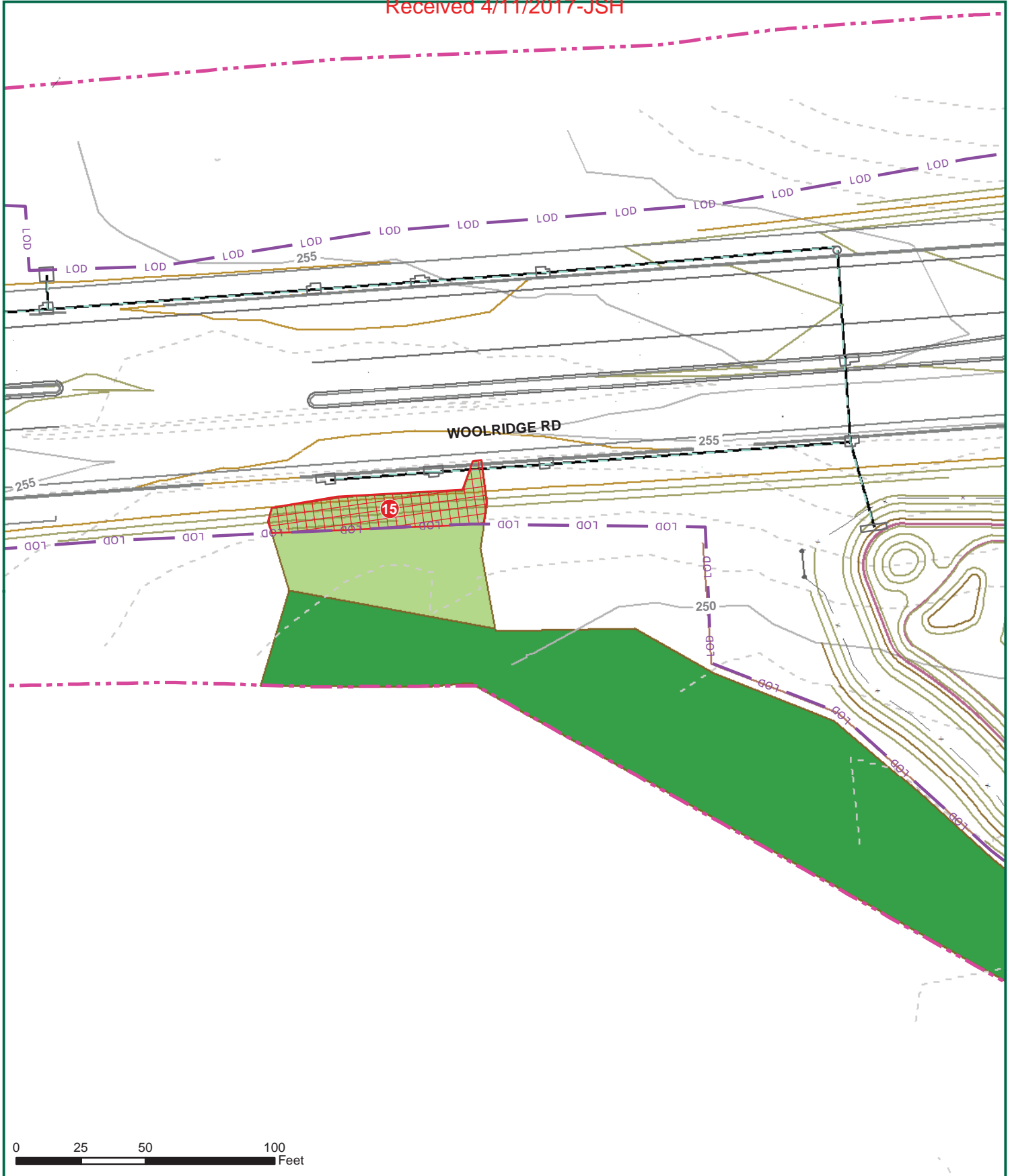
TIMMONS GROUP

YOUR VISION ACHIEVED THROUGH OURS

THIS DRAWING PREPARED AT THE CORPORATE OFFICE
1001 Boulders Parkway, Suite 300 | Richmond, VA 23225
TEL 804.200.6500 FAX 804.560.1648 www.timmons.com

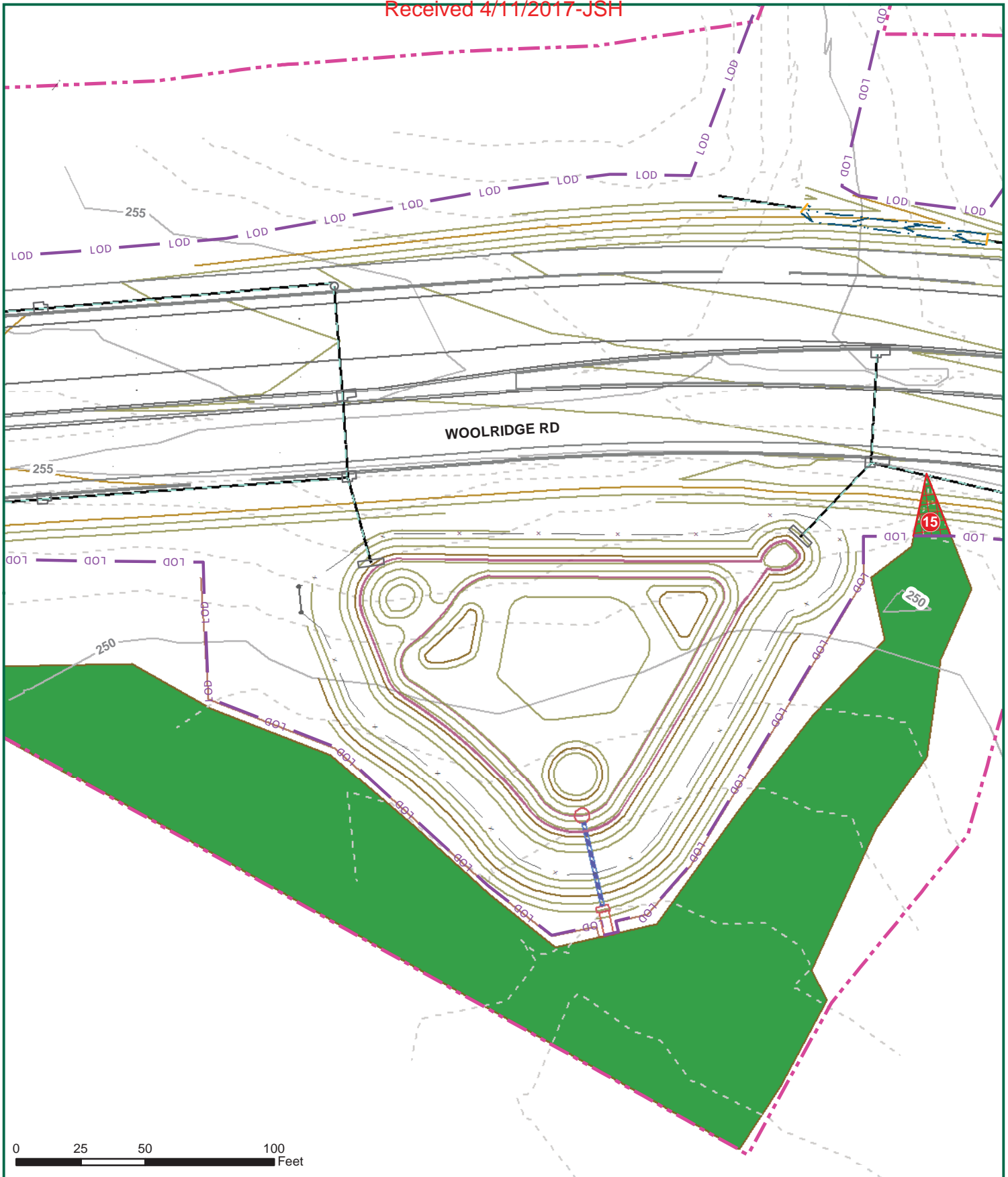
Site Development | Residential | Infrastructure | Technology | Environmental

JOB NUMBER 26259 SHEET NO. 10 of 23	<h2>WOOLRIDGE / OTTERDALE ROAD WIDENING</h2> <p>CHESTERFIELD COUNTY, VIRGINIA</p>	SCALE 1" = 50' CHECKED BY J. BROOKS DESIGNED BY E. MORRIS	DATE	REVISION DESCRIPTION
	<h3>PRELIMINARY JURISDICTIONAL WATERS OF THE U.S. IMPACTS MAP - DETAIL</h3>		03/03/17	Impacts revised per DEQ comments.
		DRAWN BY E. MORRIS		
		DATE 02/10/2017		



<h1>TIMMONS GROUP</h1>		YOUR VISION ACHIEVED THROUGH OURS		THIS DRAWING PREPARED AT THE CORPORATE OFFICE 1001 Boulders Parkway, Suite 300 Richmond, VA 23225 TEL 804.200.6500 FAX 804.560.1648 www.timmons.com	
		Site Development Residential Infrastructure Technology Environmental			
<h2>WOOLRIDGE / OTTERDALE ROAD WIDENING</h2> CHESTERFIELD COUNTY, VIRGINIA		DATE: 03/03/17		REVISION DESCRIPTION: Impacts revised per DEQ comments.	
		PRELIMINARY JURISDICTIONAL WATERS OF THE U.S. IMPACTS MAP - DETAIL			
JOB NUMBER: 26259 SHEET NO: 11 of 23	SCALE: 1" = 50'	CHECKED BY: J. BROOKS DESIGNED BY: E. MORRIS DRAWN BY: E. MORRIS DATE: 02/10/2017			

These plans and associated documents are the exclusive property of TIMMONS GROUP and may not be reproduced in whole or in part and shall not be used for any purpose whatsoever, inclusive, but not limited to construction, bidding, and/or construction staking without the express written consent of TIMMONS GROUP.



TIMMONS GROUP



YOUR VISION ACHIEVED THROUGH OURS

THIS DRAWING PREPARED AT THE CORPORATE OFFICE
1001 Boulders Parkway, Suite 300 | Richmond, VA 23225
TEL 804.200.6500 FAX 804.560.1648 www.timmons.com

Site Development | Residential | Infrastructure | Technology | Environmental

WOOLRIDGE / OTTERDALE ROAD WIDENING
CHESTERFIELD COUNTY, VIRGINIA

PRELIMINARY JURISDICTIONAL WATERS OF THE U.S. IMPACTS MAP - DETAIL

SCALE 1"=50'

CHECKED BY J. BROOKS

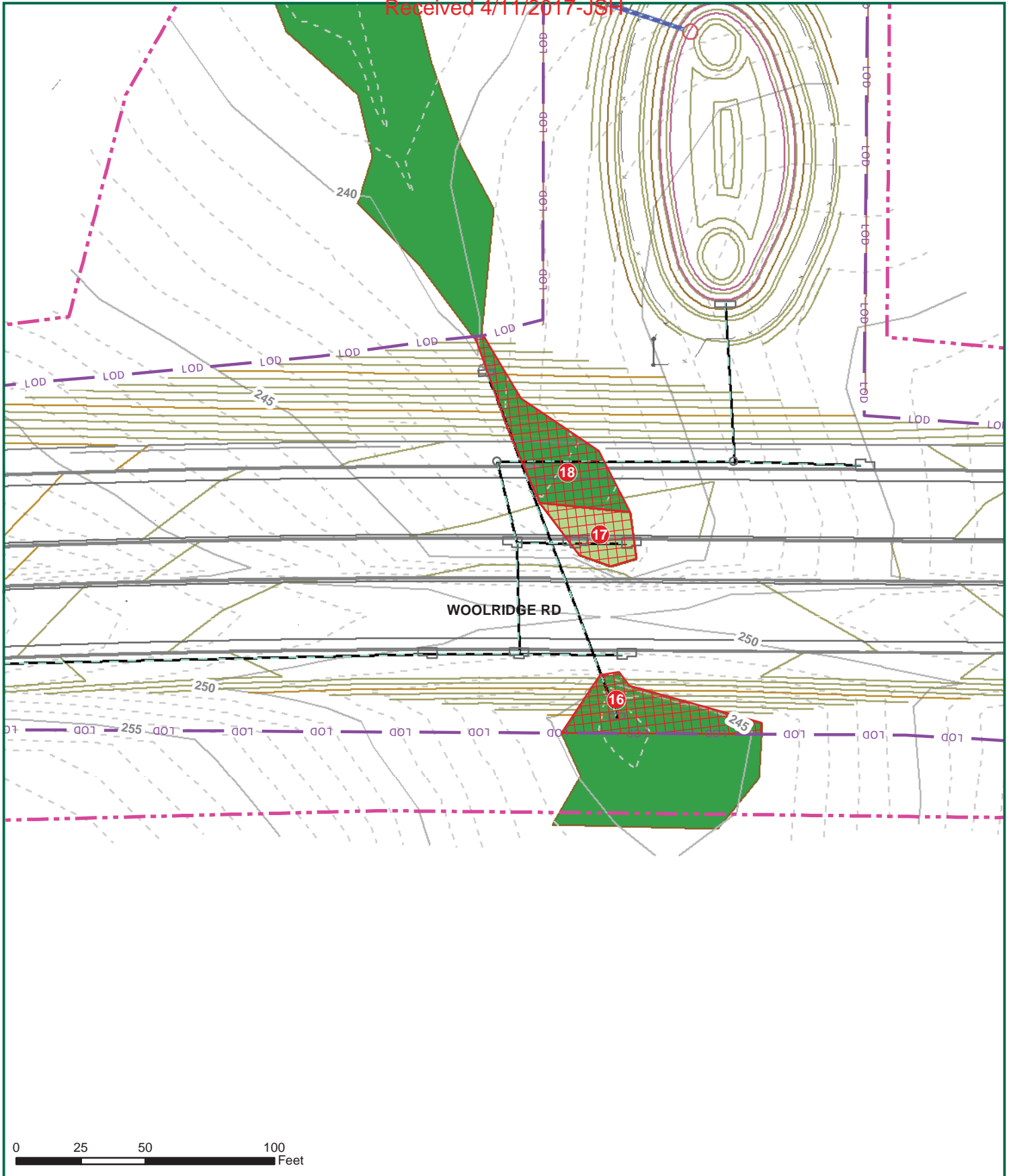
DESIGNED BY B. MORRIS

DRAWN BY E. MORRIS

DATE 02/10/2017

DATE	REVISION DESCRIPTION
03/03/17	Impacts revised per DEQ comments.

These plans and associated documents are the exclusive property of TIMMONS GROUP and may not be reproduced in whole or in part and shall not be used for any purpose whatsoever, inclusive, but not limited to construction, bidding, and/or construction staking without the express written consent of TIMMONS GROUP.



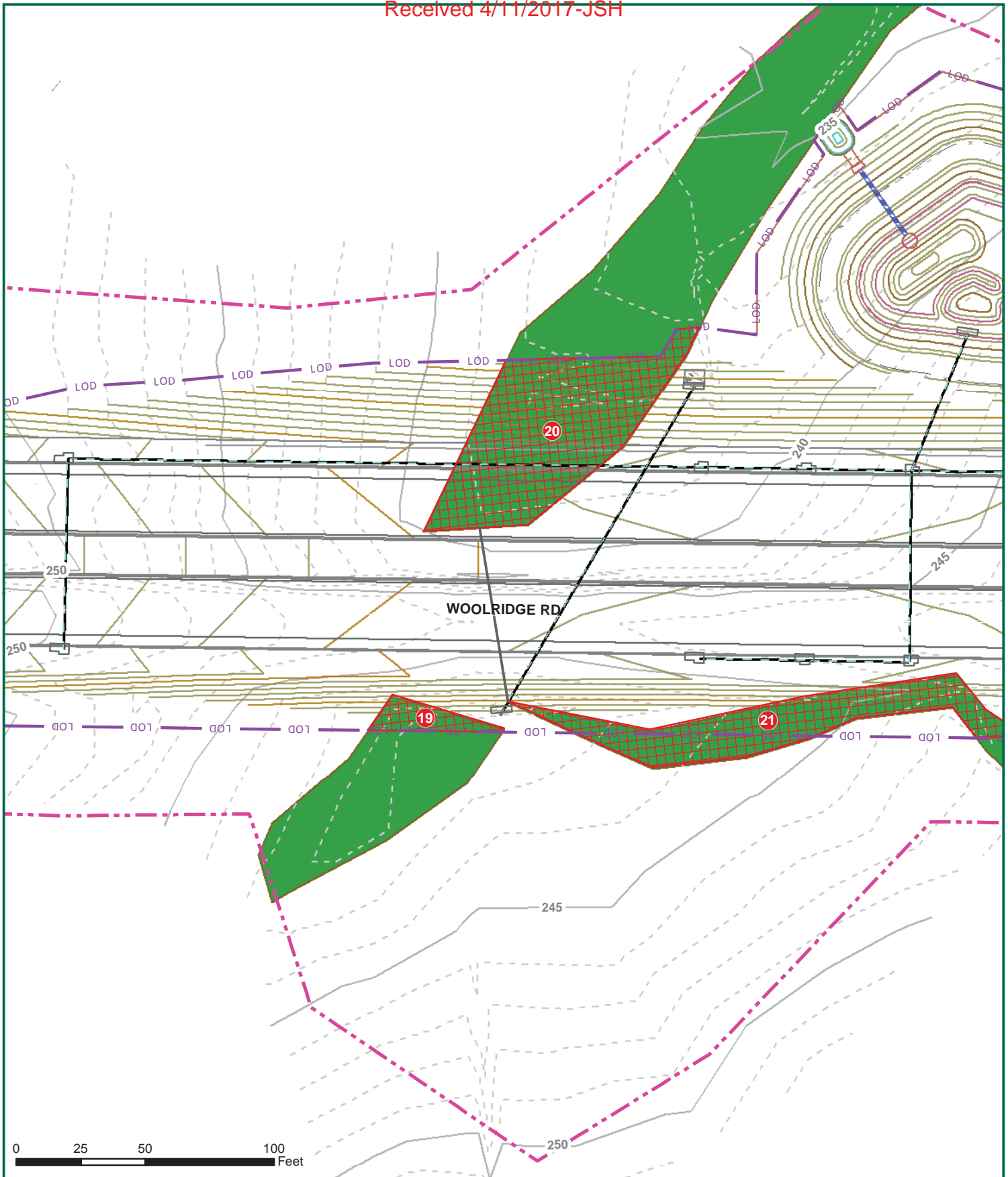
TIMMONS GROUP



YOUR VISION ACHIEVED THROUGH OURS
 THIS DRAWING PREPARED AT THE CORPORATE OFFICE
 1001 Boulders Parkway, Suite 300 | Richmond, VA 23225
 TEL 804.200.6500 FAX 804.560.1648 www.timmons.com
 Site Development | Residential | Infrastructure | Technology | Environmental

JOB NUMBER 26259	SHEET NO. 13 of 23	WOOLRIDGE / OTTERDALE ROAD WIDENING CHESTERFIELD COUNTY, VIRGINIA PRELIMINARY JURISDICTIONAL WATERS OF THE U.S. IMPACTS MAP - DETAIL	SCALE 1" = 50'	CHECKED BY J. BROOKS	DESIGNED BY B. MORRIS	DRAWN BY B. MORRIS	DATE 02/10/2017	REVISION DESCRIPTION
							DATE 03/03/17	Impacts revised per DEQ comments.

These plans and associated documents are the exclusive property of TIMMONS GROUP and may not be reproduced in whole or in part and shall not be used for any purpose whatsoever, inclusive, but not limited to construction, bidding, and/or construction staking without the express written consent of TIMMONS GROUP.



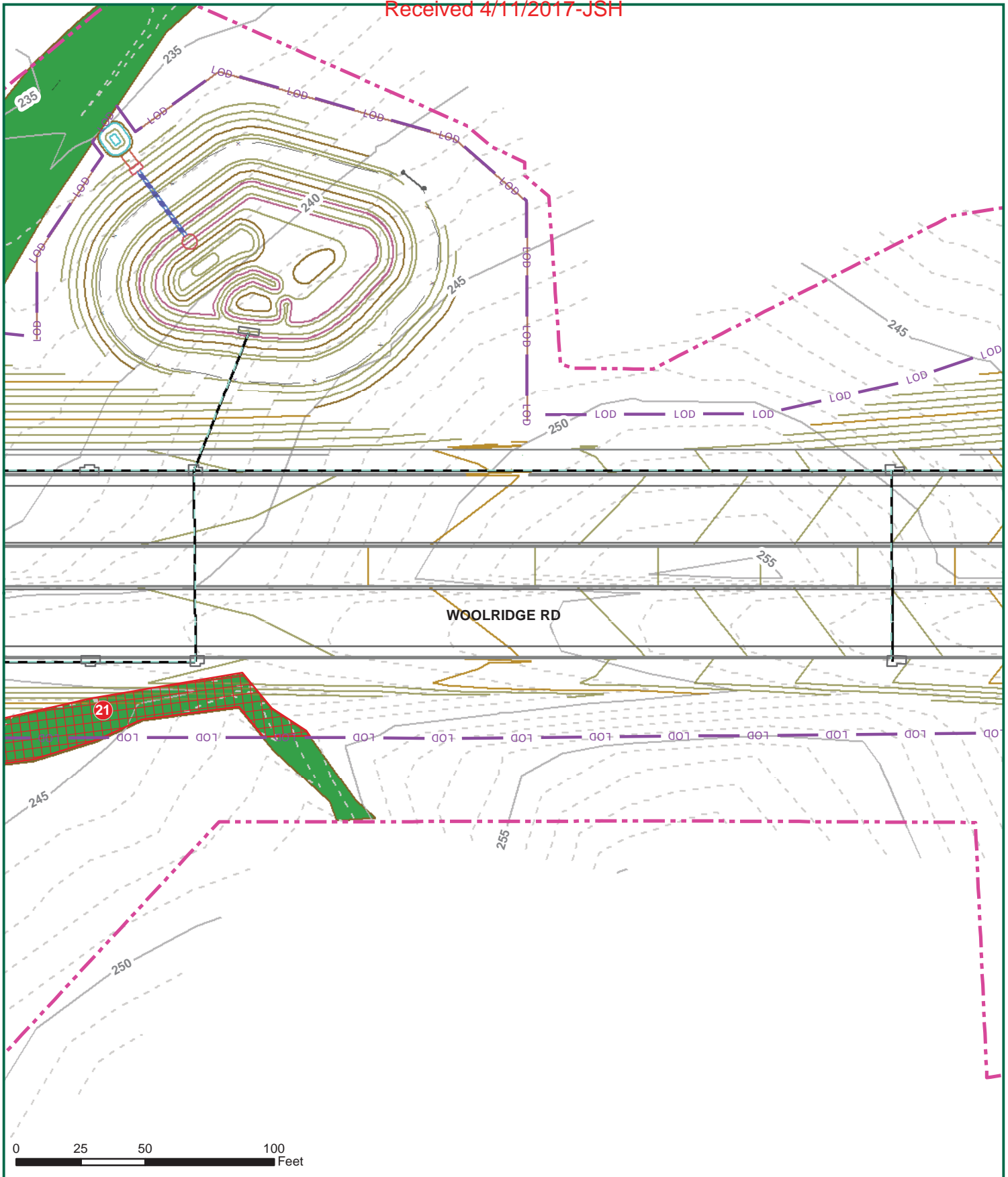
TIMMONS GROUP



YOUR VISION ACHIEVED THROUGH OURS
 THIS DRAWING PREPARED AT THE CORPORATE OFFICE
 1001 Boulders Parkway, Suite 300 | Richmond, VA 23225
 TEL 804.200.6500 FAX 804.560.1648 www.timmons.com
 Site Development | Residential | Infrastructure | Technology | Environmental

JOB NUMBER 26259	SHEET NO. 14 of 23	WOOLRIDGE / OTTERDALE ROAD WIDENING CHESTERFIELD COUNTY, VIRGINIA PRELIMINARY JURISDICTIONAL WATERS OF THE U.S. IMPACTS MAP - DETAIL	SCALE 1"=50'	CHECKED BY J. BROOKS	DESIGNED BY B. MORRIS	DRAWN BY B. MORRIS	DATE 02/10/2017	REVISION DESCRIPTION
							DATE 03/03/17	Impacts revised per DEQ comments.

These plans and associated documents are the exclusive property of TIMMONS GROUP and may not be reproduced in whole or in part and shall not be used for any purpose whatsoever, inclusive, but not limited to construction, bidding, and/or construction staking without the express written consent of TIMMONS GROUP.



TIMMONS GROUP

1001 Boulders Parkway, Suite 300 | Richmond, VA 23225
TEL 804.200.6500 FAX 804.560.1648 www.timmons.com

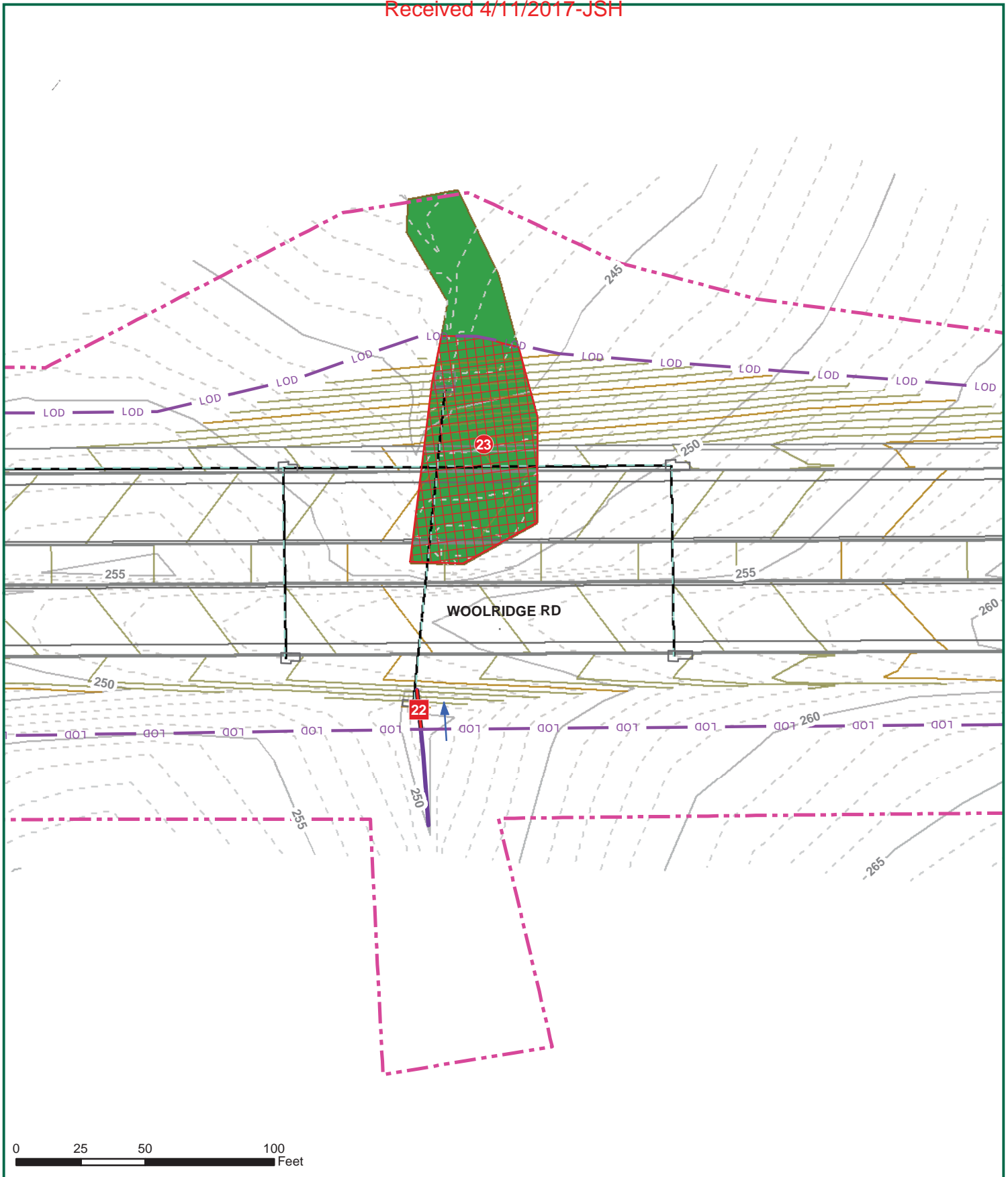
YOUR VISION ACHIEVED THROUGH CURB

Site Development | Residential | Infrastructure | Technology | Environmental

THIS DRAWING PREPARED AT THE CORPORATE OFFICE

1001 Boulders Parkway, Suite 300 | Richmond, VA 23225
TEL 804.200.6500 FAX 804.560.1648 www.timmons.com

JOB NUMBER 26259	<h2 style="margin: 0;">WOOLRIDGE / OTTERDALE ROAD WIDENING</h2> <p style="font-size: x-small; margin: 0;">CHESTERFIELD COUNTY, VIRGINIA</p>	CHECKED BY J. BROOKS DESIGNED BY E. MORRIS DRAWN BY E. MORRIS DATE 02/10/2017	DATE	REVISION DESCRIPTION
			03/03/17	Impacts revised per DEQ comments.
PRELIMINARY JURISDICTIONAL WATERS OF THE U.S. IMPACTS MAP - DETAIL				



TIMMONS GROUP

YOUR VISION ACHIEVED THROUGH OURS

THIS DRAWING PREPARED AT THE CORPORATE OFFICE
1001 Boulders Parkway, Suite 300 | Richmond, VA 23225
TEL 804.200.6500 FAX 804.560.1648 www.timmons.com

Site Development | Residential | Infrastructure | Technology | Environmental

SHEET NO. 16 of 23	JOB NUMBER 26259	WOOLRIDGE / OTTERDALE ROAD WIDENING CHESTERFIELD COUNTY, VIRGINIA	SCALE 1" = 50'	CHECKED BY J. BROOKS	DESIGNED BY B. MORRIS	DRAWN BY E. MORRIS	DATE 02/10/2017	DATE 03/03/17	REVISION DESCRIPTION Impacts revised per DEQ comments.
		PRELIMINARY JURISDICTIONAL WATERS OF THE U.S. IMPACTS MAP - DETAIL							



TIMMONS GROUP



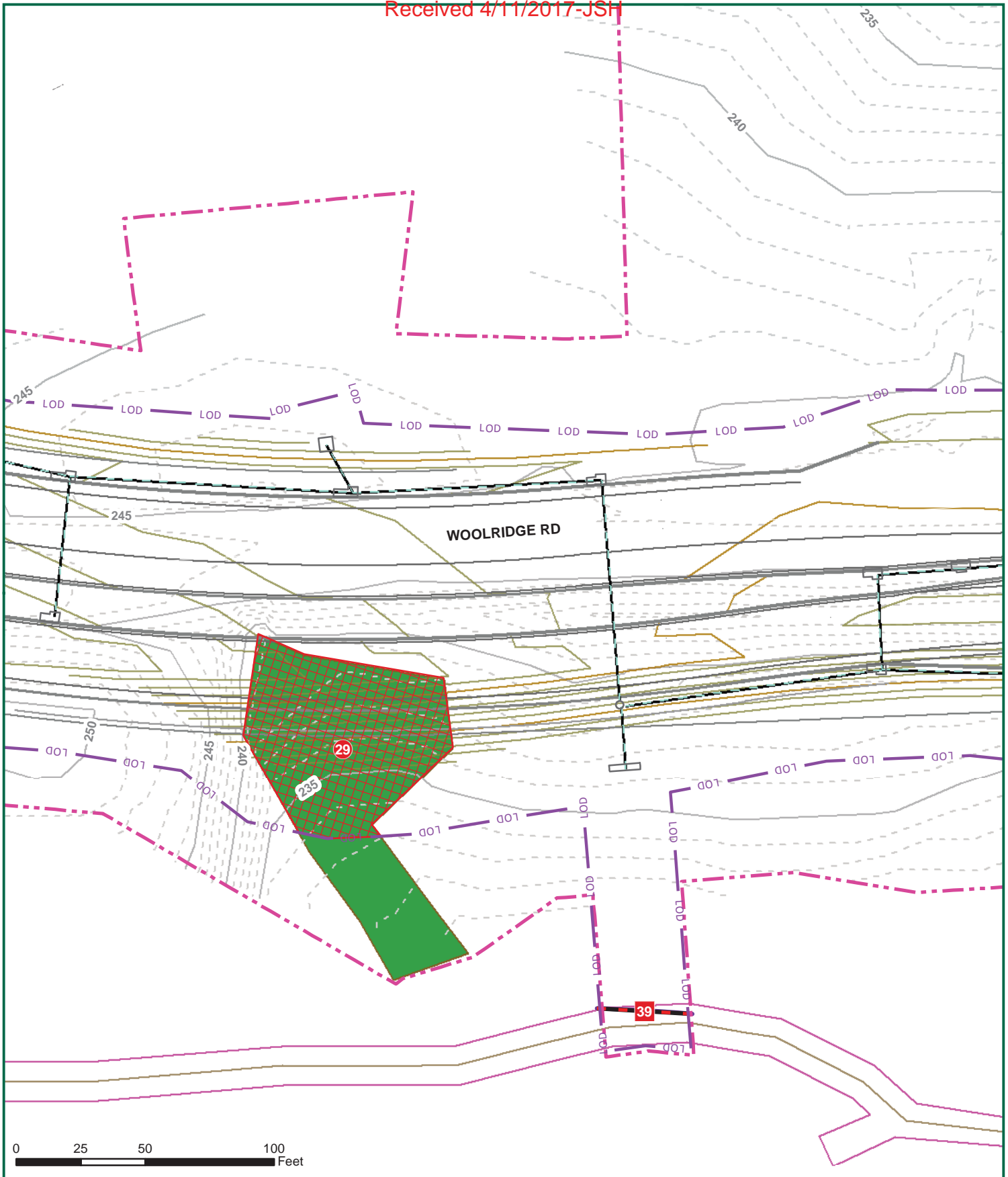
YOUR VISION ACHIEVED THROUGH OURS

THIS DRAWING PREPARED AT THE CORPORATE OFFICE
1001 Boulders Parkway, Suite 300 | Richmond, VA 23225
TEL 804.200.6500 FAX 804.560.1648 www.timmons.com

Site Development | Residential | Infrastructure | Technology | Environmental

JOB NUMBER 26259	SHEET NO. 17 of 23	WOOLRIDGE / OTTERDALE ROAD WIDENING CHESTERFIELD COUNTY, VIRGINIA PRELIMINARY JURISDICTIONAL WATERS OF THE U.S. IMPACTS MAP - DETAIL	CHECKED BY J. BROOKS SCALE 1" = 50'	DESIGNED BY B. MORRIS DRAWN BY B. MORRIS	DATE 02/10/2017	REVISION DESCRIPTION
					DATE 03/03/17	Impacts revised per DEQ comments.

These plans and associated documents are the exclusive property of TIMMONS GROUP and may not be reproduced in whole or in part and shall not be used for any purpose whatsoever, inclusive, but not limited to construction, bidding, and/or construction staking without the express written consent of TIMMONS GROUP.



TIMMONS GROUP



YOUR VISION ACHIEVED THROUGH OURS

THIS DRAWING PREPARED AT THE CORPORATE OFFICE
1001 Boulders Parkway, Suite 300 | Richmond, VA 23225
TEL 804.200.6500 FAX 804.560.1648 www.timmons.com

Site Development | Residential | Infrastructure | Technology | Environmental

JOB NUMBER 26259	SHEET NO. 18 of 23	WOOLRIDGE / OTTERDALE ROAD WIDENING CHESTERFIELD COUNTY, VIRGINIA PRELIMINARY JURISDICTIONAL WATERS OF THE U.S. IMPACTS MAP - DETAIL	SCALE 1" = 50' CHECKED BY J. BROOKS DESIGNED BY E. MORRIS	DATE	REVISION DESCRIPTION
				02/10/2017	03/03/17
DRAWN BY E. MORRIS				DATE	
				DATE	

These plans and associated documents are the exclusive property of TIMMONS GROUP and may not be reproduced in whole or in part and shall not be used for any purpose whatsoever, inclusive, but not limited to construction, bidding, and/or construction staking without the express written consent of TIMMONS GROUP.



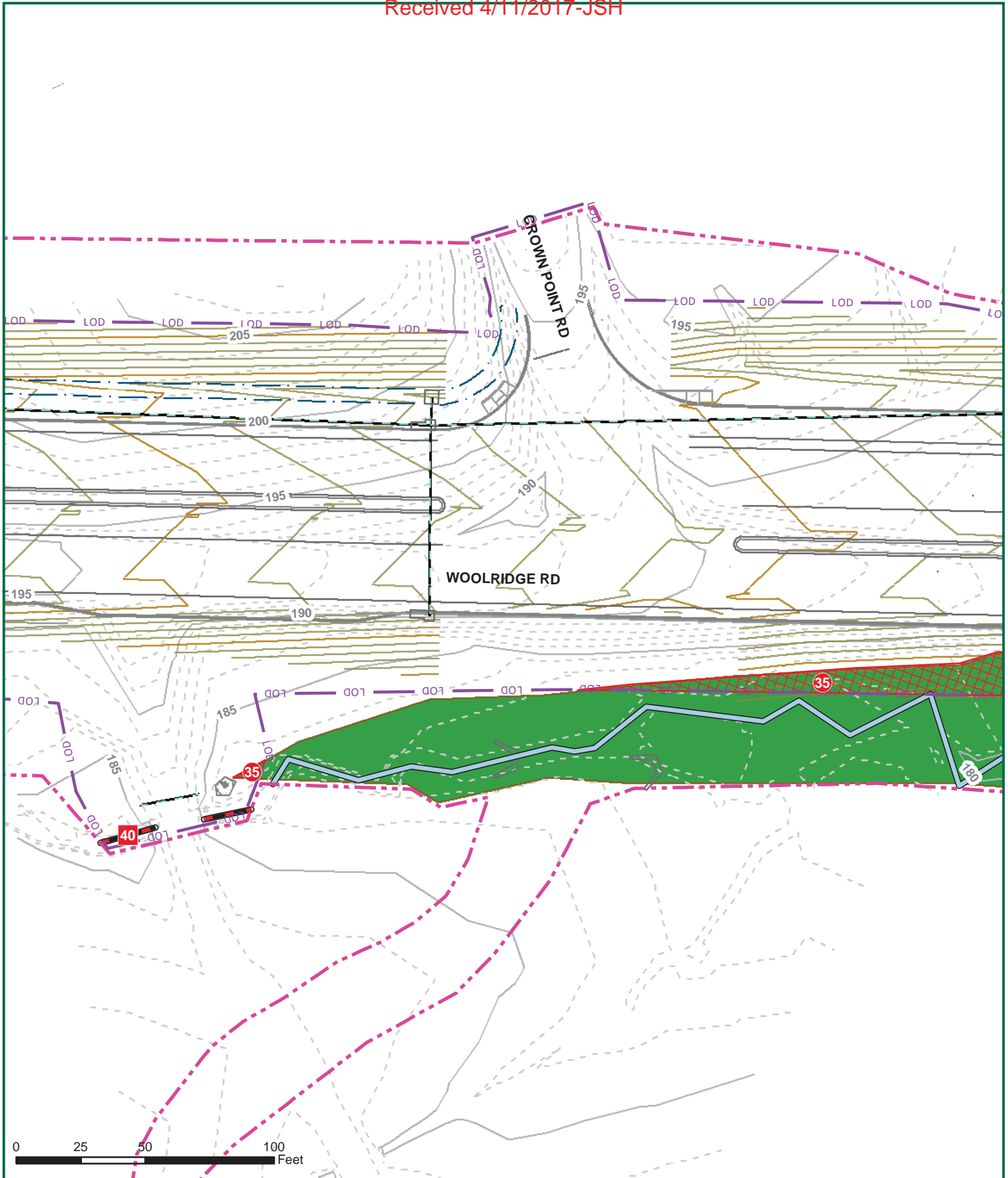
TIMMONS GROUP



YOUR VISION ACHIEVED THROUGH OURS
 THIS DRAWING PREPARED AT THE CORPORATE OFFICE
 1001 Boulders Parkway, Suite 300 | Richmond, VA 23225
 TEL 804.200.6500 FAX 804.560.1648 www.timmons.com
 Site Development | Residential | Infrastructure | Technology | Environmental

JOB NUMBER 26259	WOOLRIDGE / OTTERDALE ROAD WIDENING		DATE 03/03/17	REVISION DESCRIPTION Impacts revised per DEQ comments.
	CHESTERFIELD COUNTY, VIRGINIA			
SHEET NO. 19 of 23	PRELIMINARY JURISDICTIONAL WATERS OF THE U.S. IMPACTS MAP - DETAIL		DATE 02/10/2017	
	SCALE 1" = 50'	CHECKED BY J. BROOKS	DESIGNED BY B. MORRIS	DRAWN BY E. MORRIS

These plans and associated documents are the exclusive property of TIMMONS GROUP and may not be reproduced in whole or in part and shall not be used for any purpose whatsoever, inclusive, but not limited to construction, bidding, and/or construction staking without the express written consent of TIMMONS GROUP.



TIMMONS GROUP



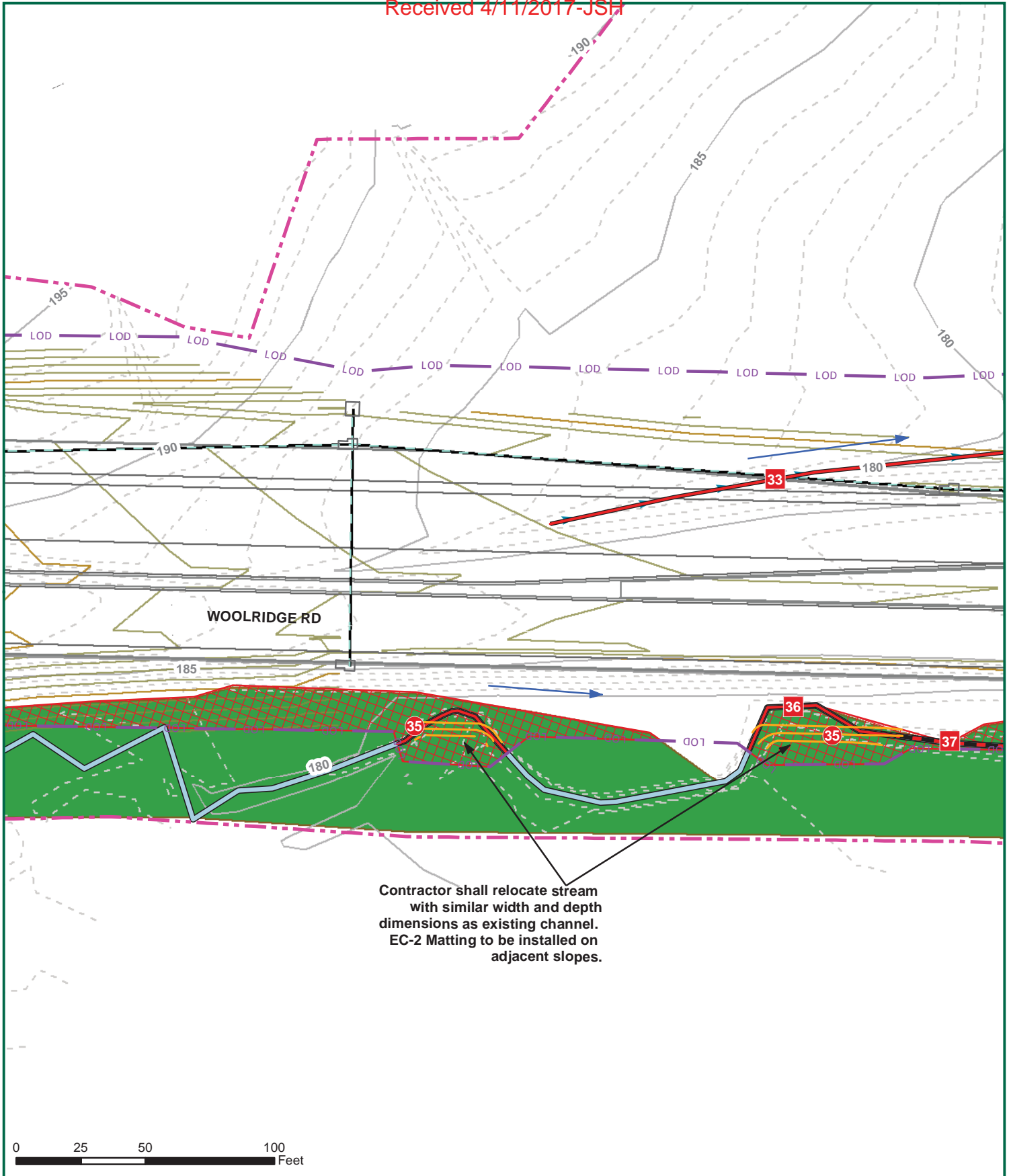
YOUR VISION ACHIEVED THROUGH OURS

THIS DRAWING PREPARED AT THE CORPORATE OFFICE
1001 Boulders Parkway, Suite 300 | Richmond, VA 23225
TEL 804.200.6500 FAX 804.560.1648 www.timmons.com

Site Development | Residential | Infrastructure | Technology | Environmental

JOB NUMBER 26259	SHEET NO. 20 of 23	WOOLRIDGE / OTTERDALE ROAD WIDENING		SCALE 1"=50'	CHECKED BY J. BROOKS	DESIGNED BY B. MORRIS	DRAWN BY B. MORRIS	DATE	REVISION DESCRIPTION
		CHESTERFIELD COUNTY, VIRGINIA						02/10/2017	03/03/17 Impacts revised per DEQ comments.
PRELIMINARY JURISDICTIONAL WATERS OF THE U.S. IMPACTS MAP - DETAIL									

These plans and associated documents are the exclusive property of TIMMONS GROUP and may not be reproduced in whole or in part and shall not be used for any purpose whatsoever, inclusive, but not limited to construction, bidding, and/or construction staking without the express written consent of TIMMONS GROUP.



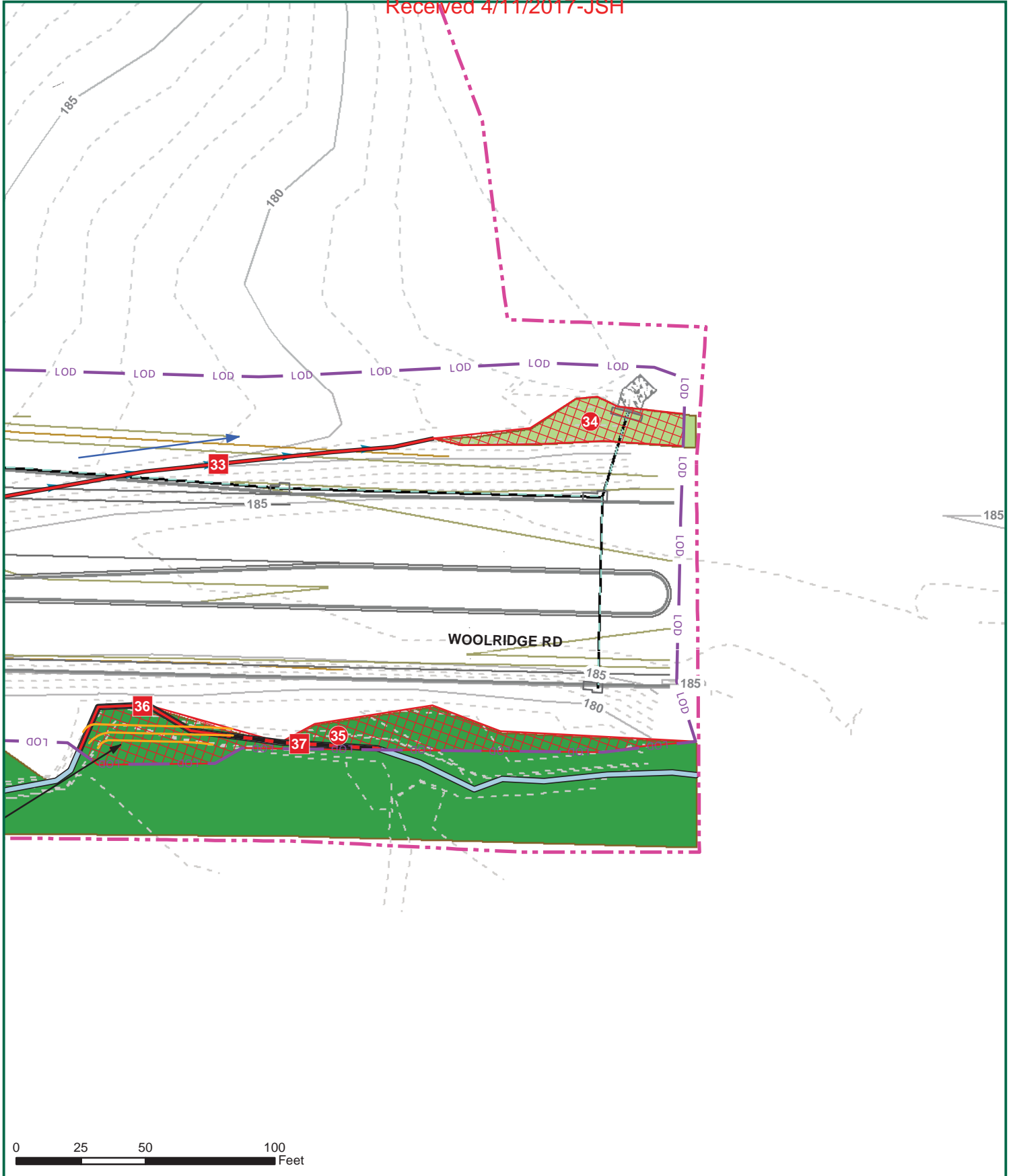
TIMMONS GROUP

YOUR VISION ACHIEVED THROUGH OURS

THIS DRAWING PREPARED AT THE CORPORATE OFFICE
1001 Boulders Parkway, Suite 300 | Richmond, VA 23225
TEL 804.200.6500 FAX 804.560.1648 www.timmons.com

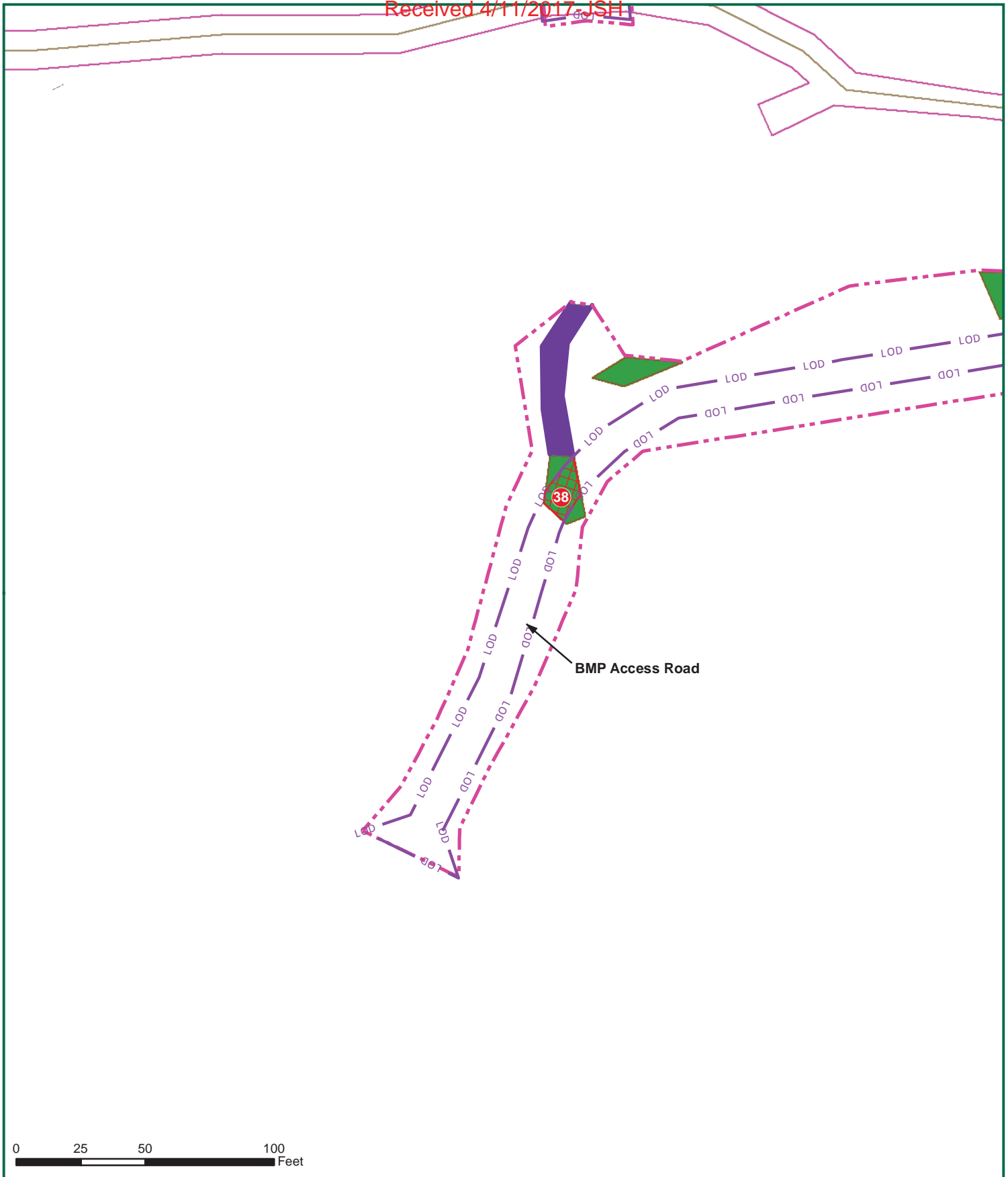
Site Development | Residential | Infrastructure | Technology | Environmental

JOB NUMBER 26259 SHEET NO. 21 of 23	WOOLRIDGE / OTTERDALE ROAD WIDENING CHESTERFIELD COUNTY, VIRGINIA	SCALE 1" = 50'	CHECKED BY J. BROOKS	DESIGNED BY B. MORRIS	DRAWN BY E. MORRIS	DATE 02/10/2017	DATE 03/03/17	REVISION DESCRIPTION Impacts revised per DEQ comments.
	PRELIMINARY JURISDICTIONAL WATERS OF THE U.S. IMPACTS MAP - DETAIL							



<h1>TIMMONS GROUP</h1>		YOUR VISION ACHIEVED THROUGH OURS		THIS DRAWING PREPARED AT THE CORPORATE OFFICE 1001 Boulders Parkway, Suite 300 Richmond, VA 23225 TEL 804.200.6500 FAX 804.560.1648 www.timmons.com	
		Site Development Residential Infrastructure Technology Environmental			
JOB NUMBER 26259	SHEET NO. 22 of 23	<h2>WOOLRIDGE / OTTERDALE ROAD WIDENING</h2> CHESTERFIELD COUNTY, VIRGINIA		DATE	REVISION DESCRIPTION
		<h3>PRELIMINARY JURISDICTIONAL WATERS OF THE U.S. IMPACTS MAP - DETAIL</h3>		03/03/17	Impacts revised per DEQ comments.
SCALE 1" = 50'		CHECKED BY J. BROOKS	DESIGNED BY B. MORRIS	DRAWN BY B. MORRIS	DATE 02/10/2017

These plans and associated documents are the exclusive property of TIMMONS GROUP and may not be reproduced in whole or in part and shall not be used for any purpose whatsoever, inclusive, but not limited to construction, bidding, and/or construction staking without the express written consent of TIMMONS GROUP.



TIMMONS GROUP

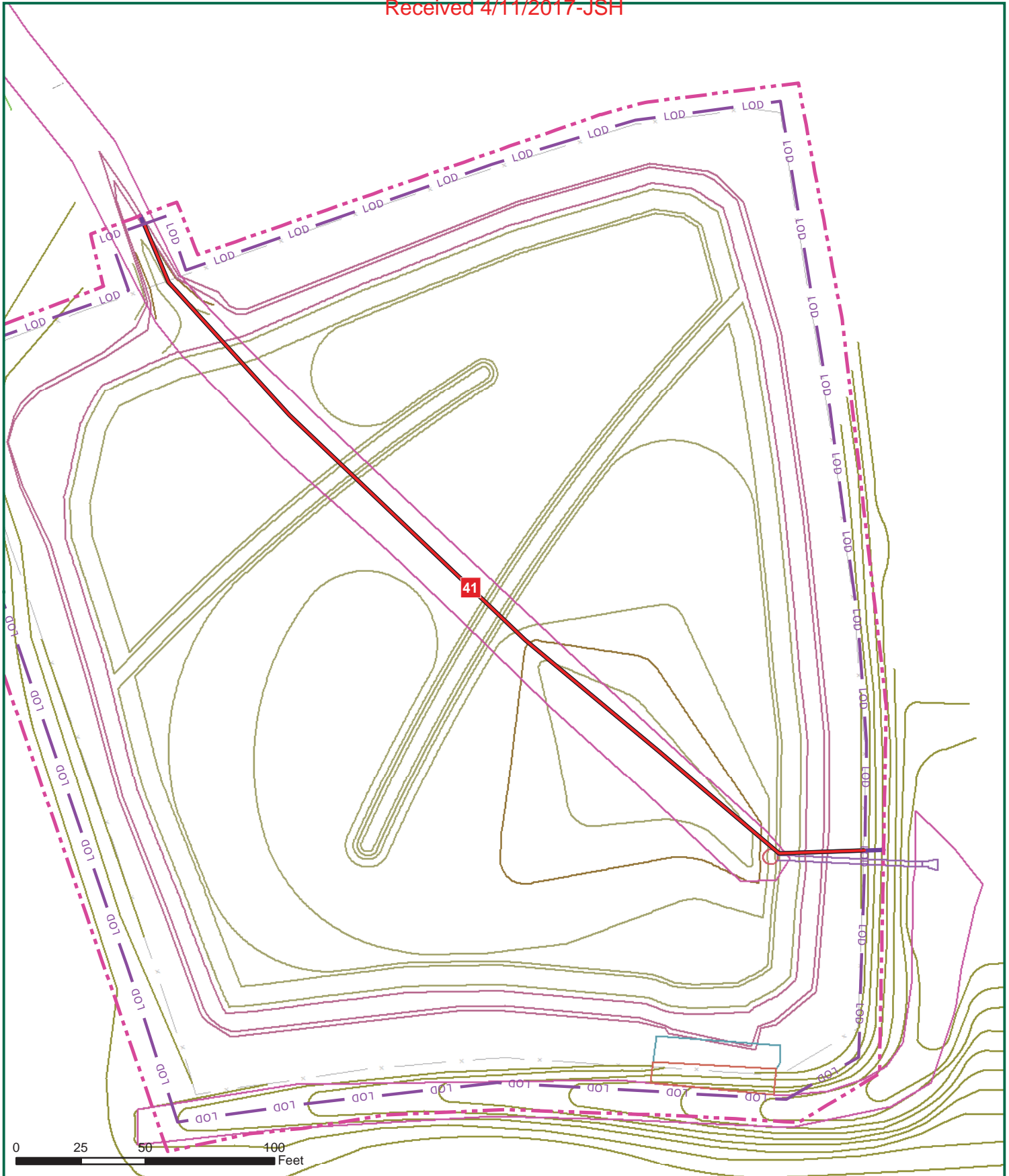


YOUR VISION ACHIEVED THROUGH OURS

THIS DRAWING PREPARED AT THE CORPORATE OFFICE
1001 Boulders Parkway, Suite 300 | Richmond, VA 23225
TEL 804.200.6500 FAX 804.560.1648 www.timmons.com

Site Development | Residential | Infrastructure | Technology | Environmental

JOB NUMBER 26259	SHEET NO. 23 of 23	WOOLRIDGE / OTTERDALE ROAD WIDENING CHESTERFIELD COUNTY, VIRGINIA	SCALE 1"=50'	CHECKED BY J. BROOKS	DESIGNED BY B. MORRIS	DRAWN BY E. MORRIS	DATE	REVISION DESCRIPTION
							02/10/2017	03/03/17 Impacts revised per DEQ comments.
		PRELIMINARY JURISDICTIONAL WATERS OF THE U.S. IMPACTS MAP - DETAIL						



TIMMONS GROUP



YOUR VISION ACHIEVED THROUGH OURS

THIS DRAWING PREPARED AT THE CORPORATE OFFICE
1001 Boulders Parkway, Suite 300 | Richmond, VA 23225
TEL 804.200.6500 FAX 804.560.1648 www.timmons.com

Site Development | Residential | Infrastructure | Technology | Environmental

WOOLRIDGE / OTTERDALE ROAD WIDENING

CHESTERFIELD COUNTY, VIRGINIA

PRELIMINARY JURISDICTIONAL WATERS OF THE U.S. IMPACTS MAP - DETAIL

SHEET NO.
24 of 23

JOB NUMBER
26259

SCALE
1" = 50'

CHECKED BY
J. BROOKS

DESIGNED BY
E. MORRIS

DRAWN BY
E. MORRIS

DATE
02/10/2017

DATE	REVISION DESCRIPTION
03/03/17	Impacts revised per DEQ comments.

These plans and associated documents are the exclusive property of TIMMONS GROUP and may not be reproduced in whole or in part and shall not be used for any purpose whatsoever, inclusive, but not limited to construction, bidding, and/or construction staking without the express written consent of TIMMONS GROUP.