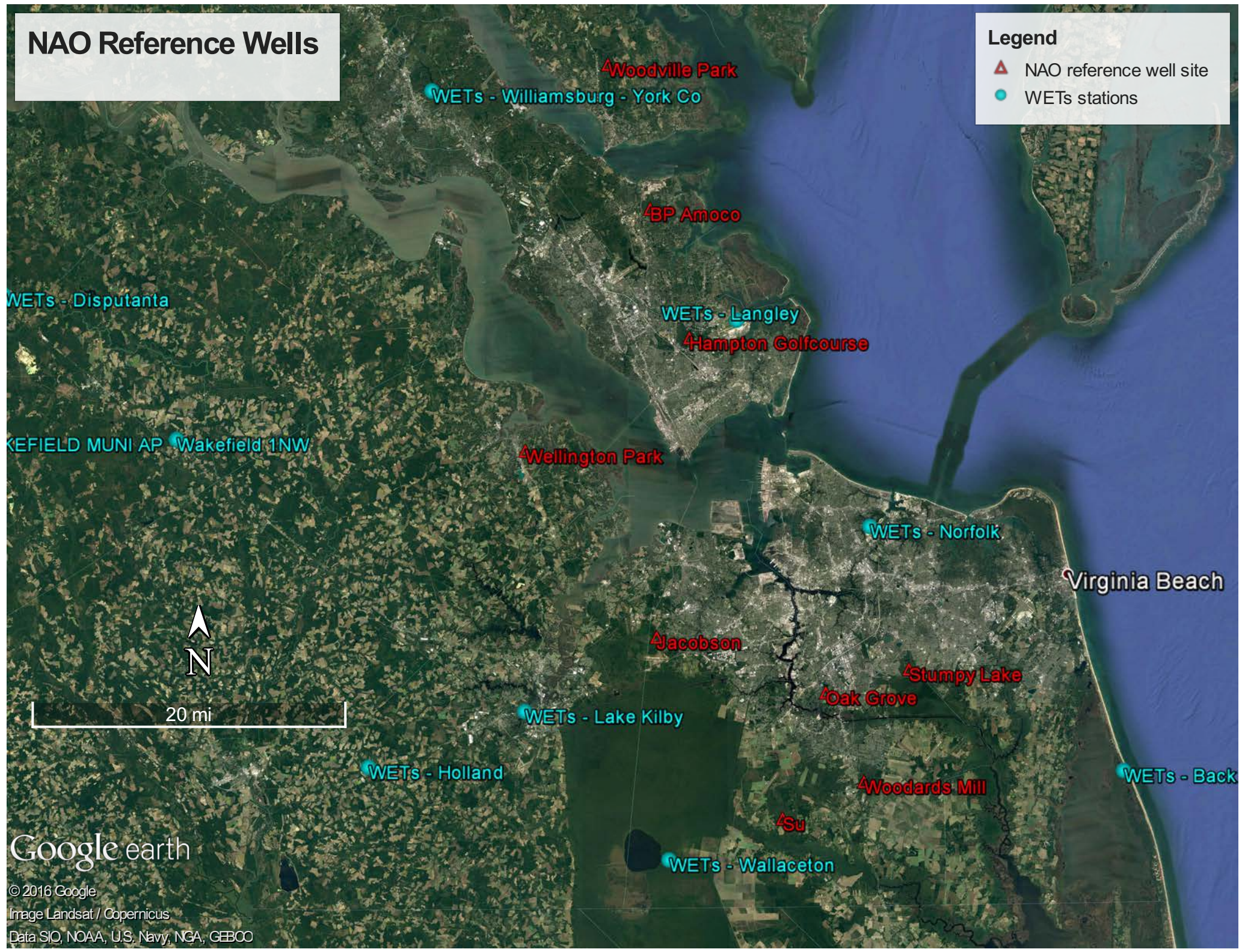


NAO Reference Wells

Legend

- ▲ NAO reference well site
- WETs stations

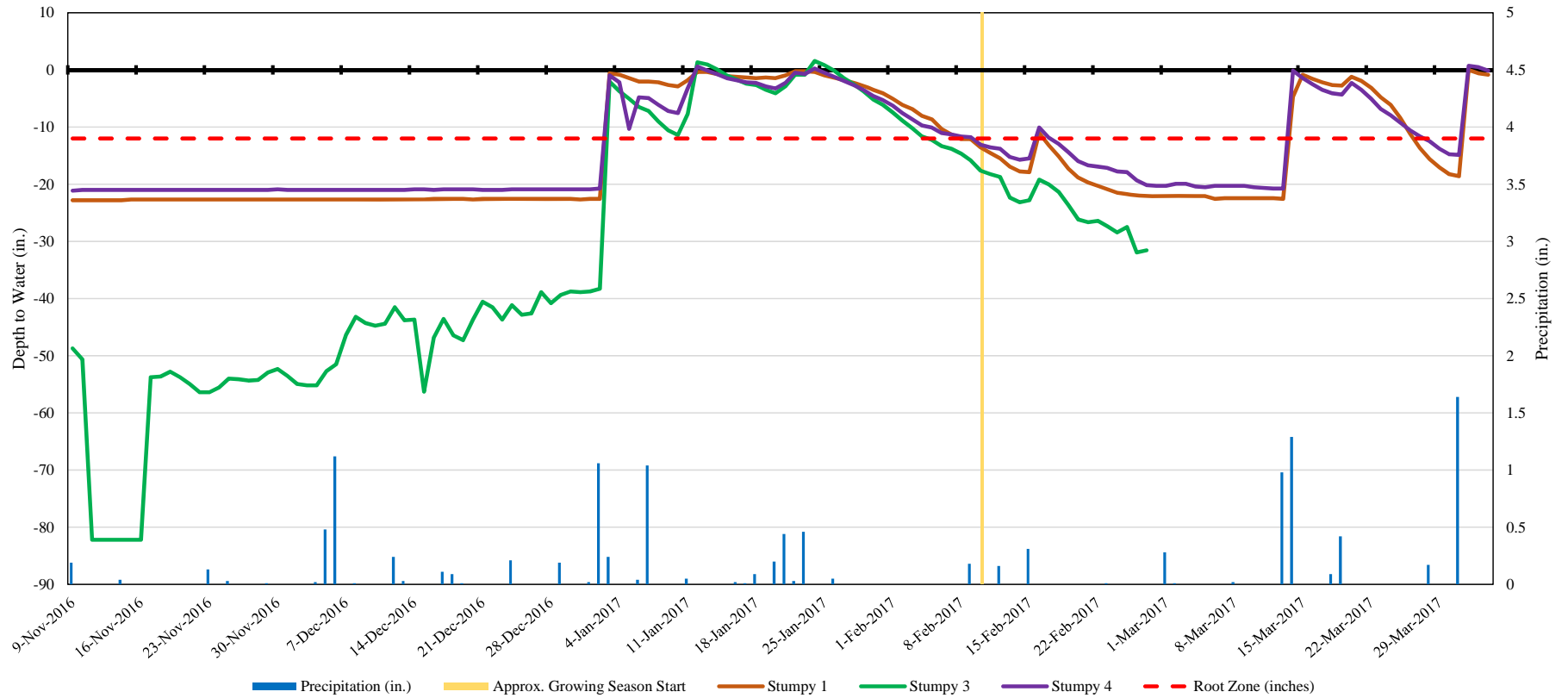


Stumpy Lake - all wells 2016-2017 monitoring season

Stumpy 1 - 35 consecutive days (03 Jan - 07 Feb 2017) - 12 & 2+ days in the growing season (14-26 March & 01-03+ April 2017)

Stumpy 3 - 32 consecutive days (03 Jan - 04 Feb 2017) - **calibration problems**

Stumpy 4 - 37 consecutive days (03 Jan - 09 Feb 2017) - 14 & 2+ days in the growing season (14-28 March & 01-03+ April 2017)

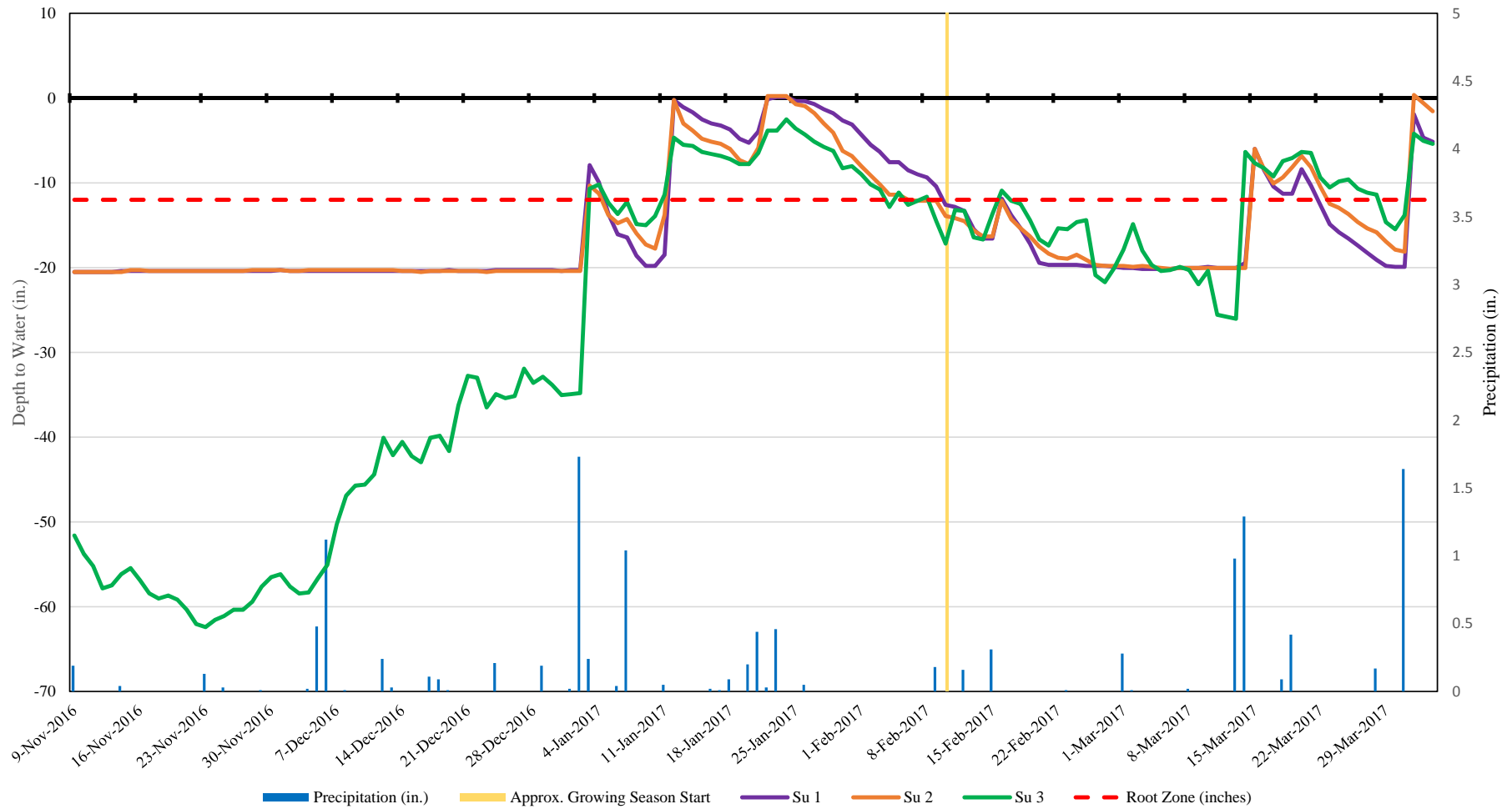


Su - all wells 2016-2017 monitoring season

Su 1 - 7 & 2+ days in the growing season (15-22 March & 01-03+ April 2017)

Su 2 - 8 & 2+ days in the growing season (15-23 March & 01-03+ April 2017)

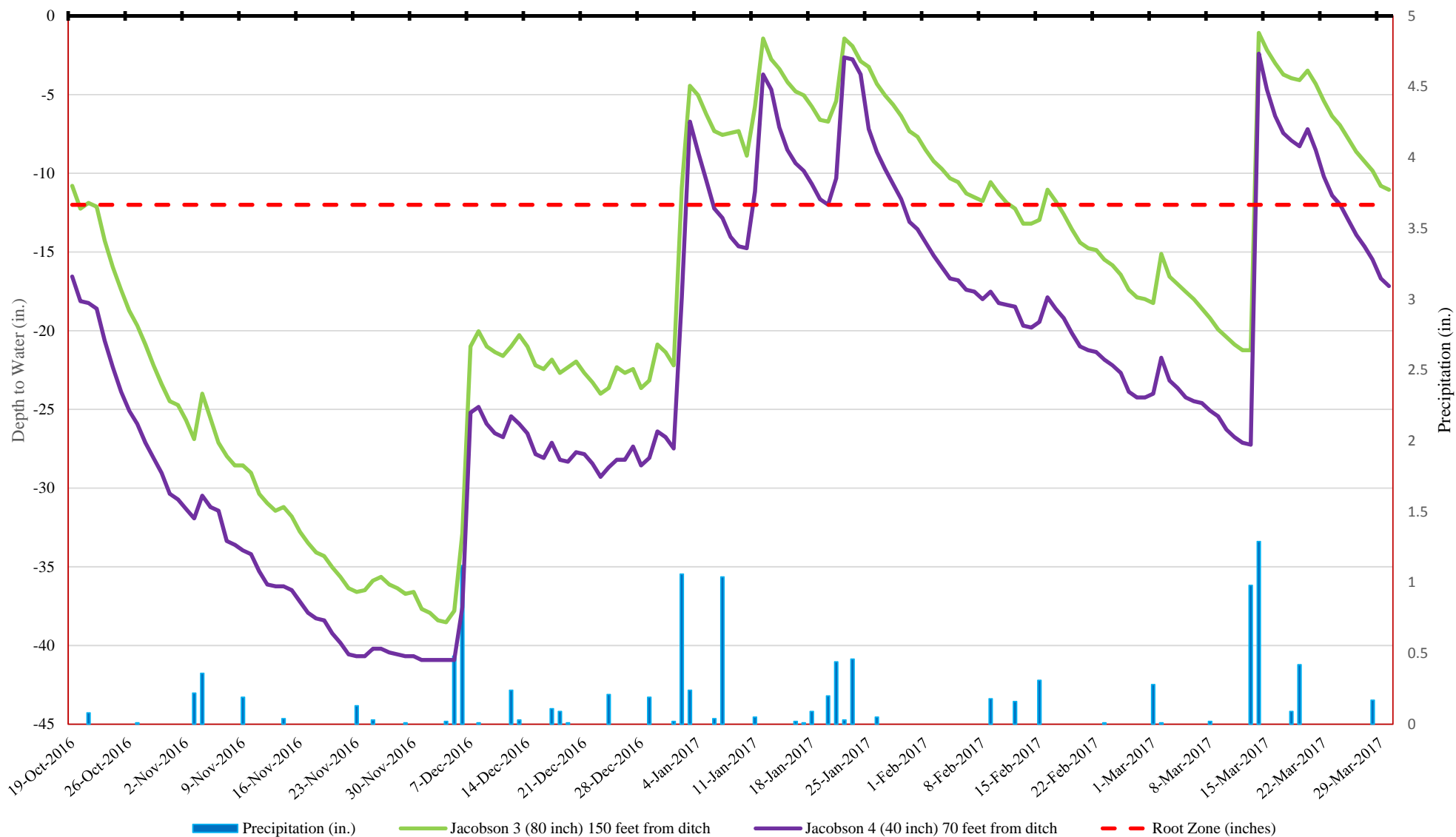
Su 3 - 14 days in the growing season (14-28 March 2017)



Jacobson Wells 3 and 4 2016-2017 monitoring season

Well 3: 150 ft from ditch (80 inch) (17 days hydrology in growing season)

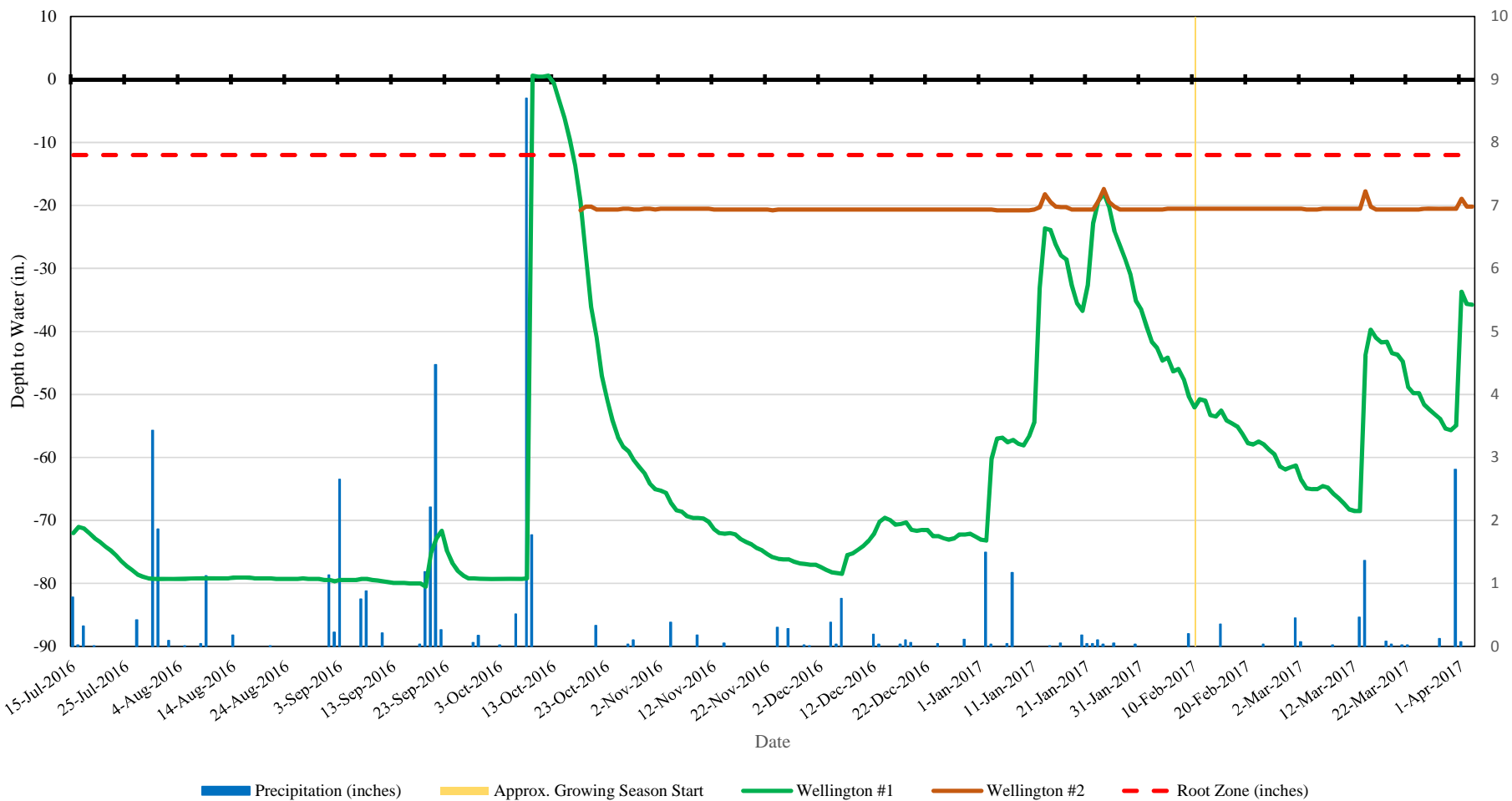
Well 4: 70 ft from ditch (40 inch) (10 days hydrology in growing season)



Wellington - both wells

Wellington #1 - 7 consecutive days (09 to 16 Oct 2016) - 0 days in the growing season

Wellington #2 - 0 days in the growing season

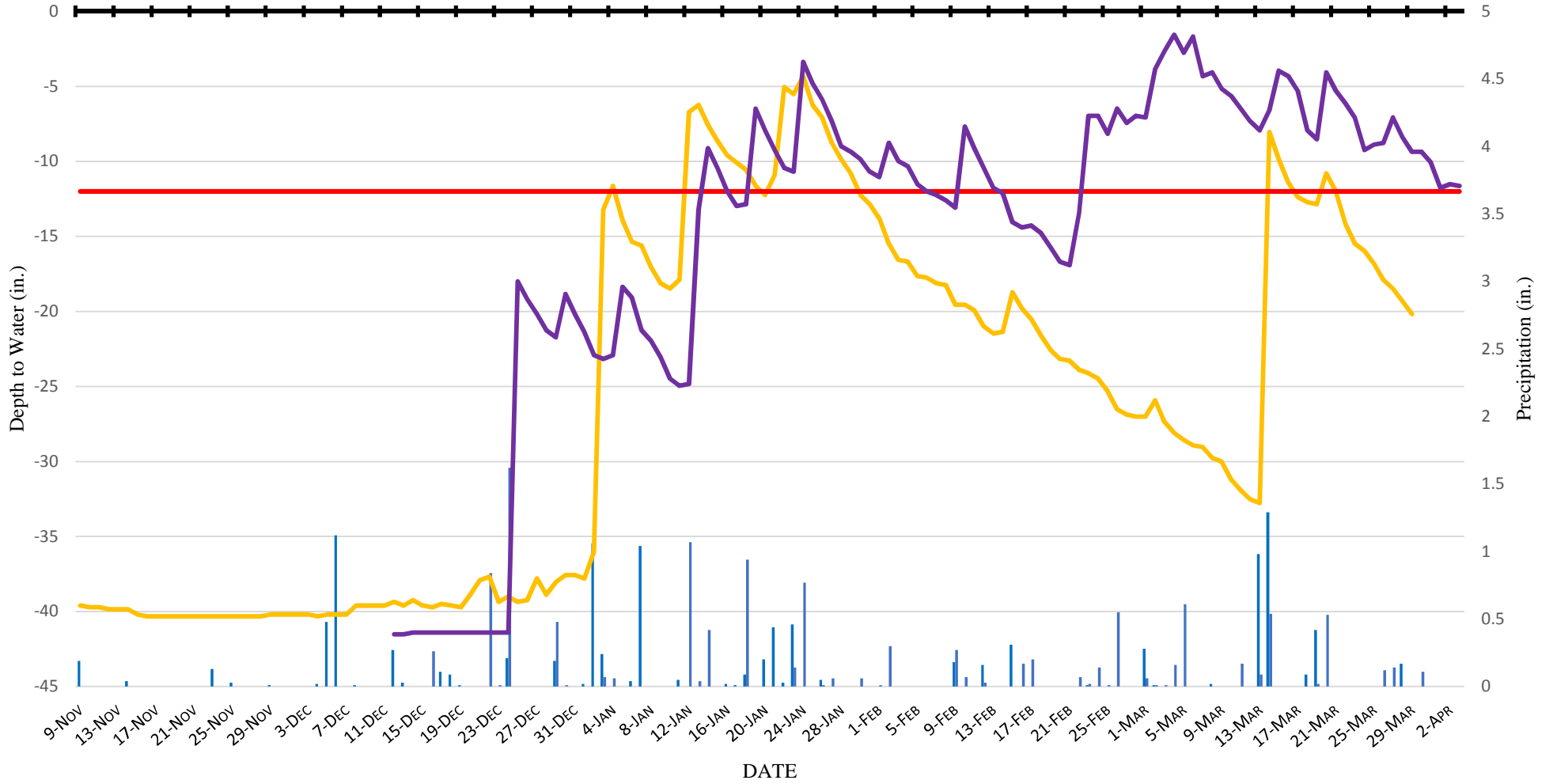


Oak Grove #2 (40" well) (old well #3)

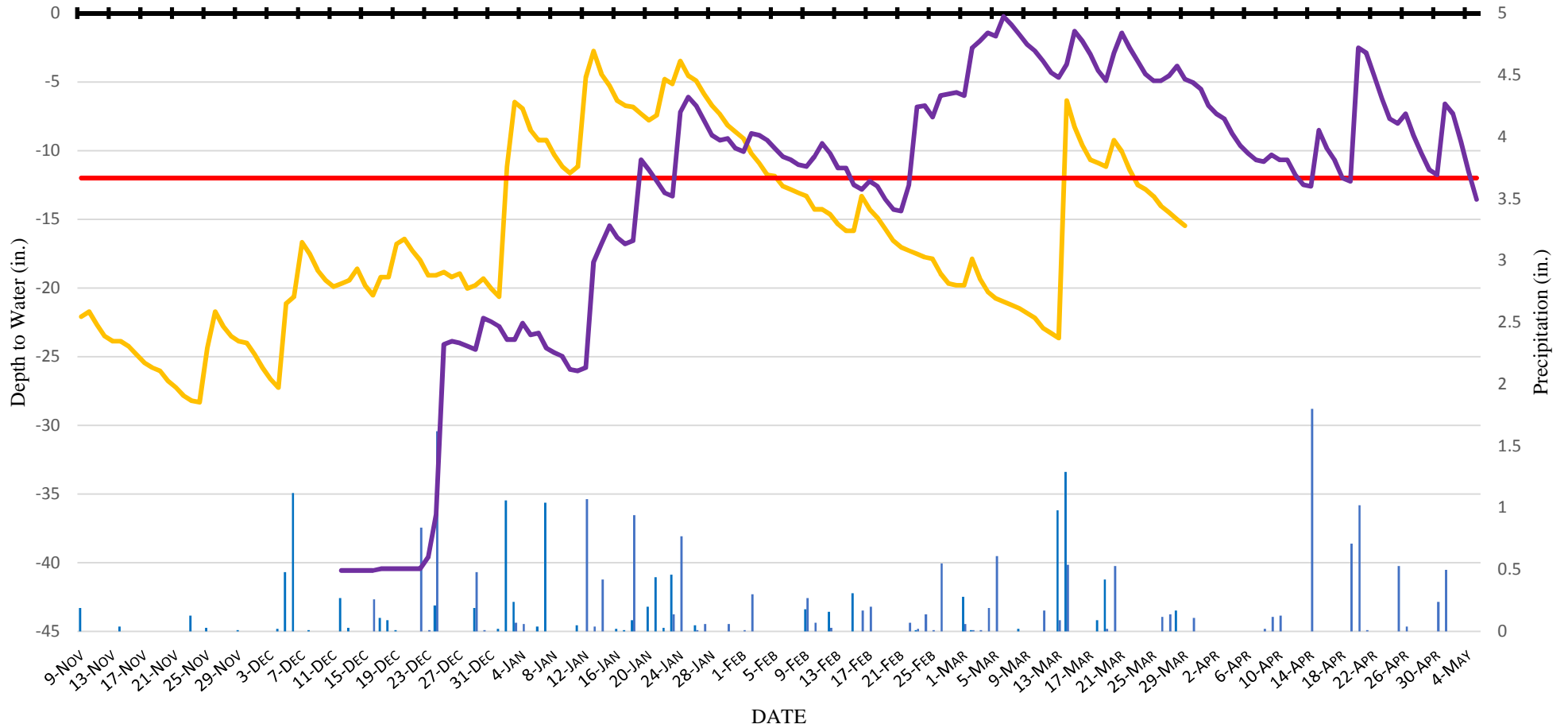
2017 vs 2015 hydrographs

2017-3 days hydrology

2015- 40 days hydrology



Woodards 4
 200 feet EW Ditch- Well 5 Transect
 2017 vs 2015 hydrographs
 2017- days hydrology
 2015- days hydrology



Stumpy Lake #4 (Well 20)

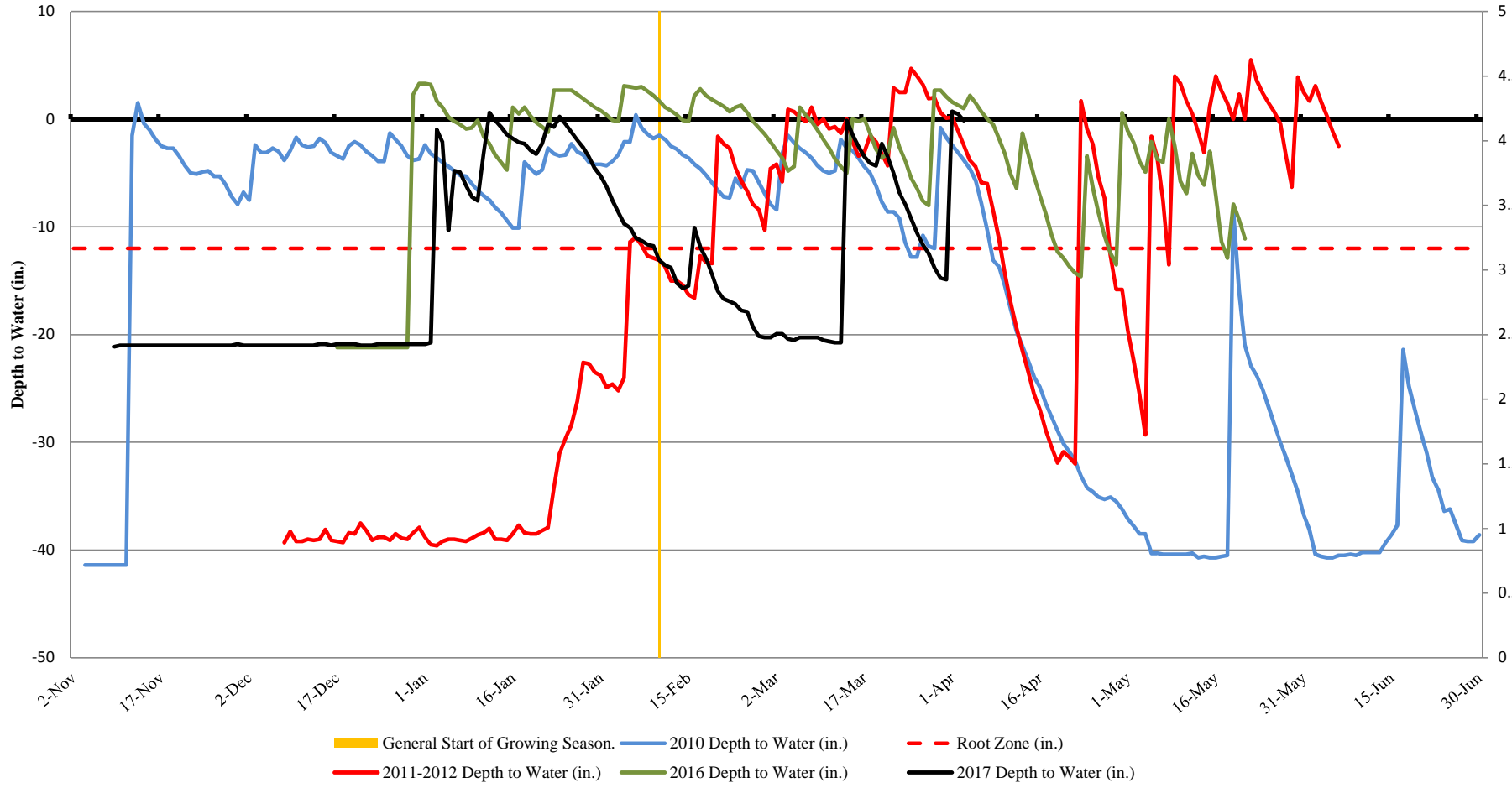
Combined Years:

2010 - 146 days

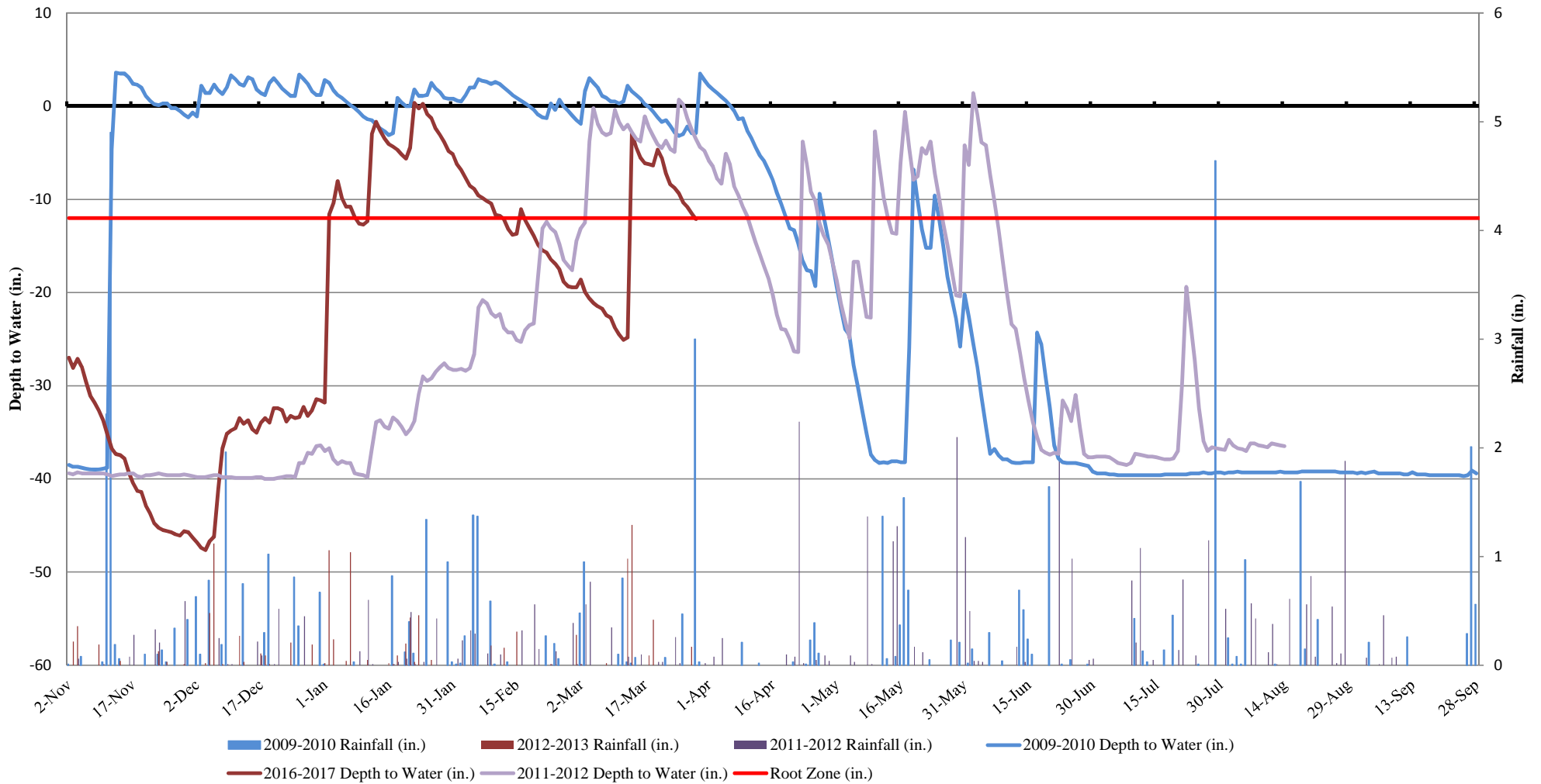
2012 - 48 days

2016 - 112 days

2017 - 37 days (14 & 2+ days in the growing season)



Oak Grove #3 (Reference)
Combined Years Hydrology w/in 12 inches:
 2010 - total 159 days ("wet year") (Nov- Apr)
 2012 - 38 days ("dry year") (March 4- Apr 10)
 2017 - 15+ days (current year) (March 14-28+)



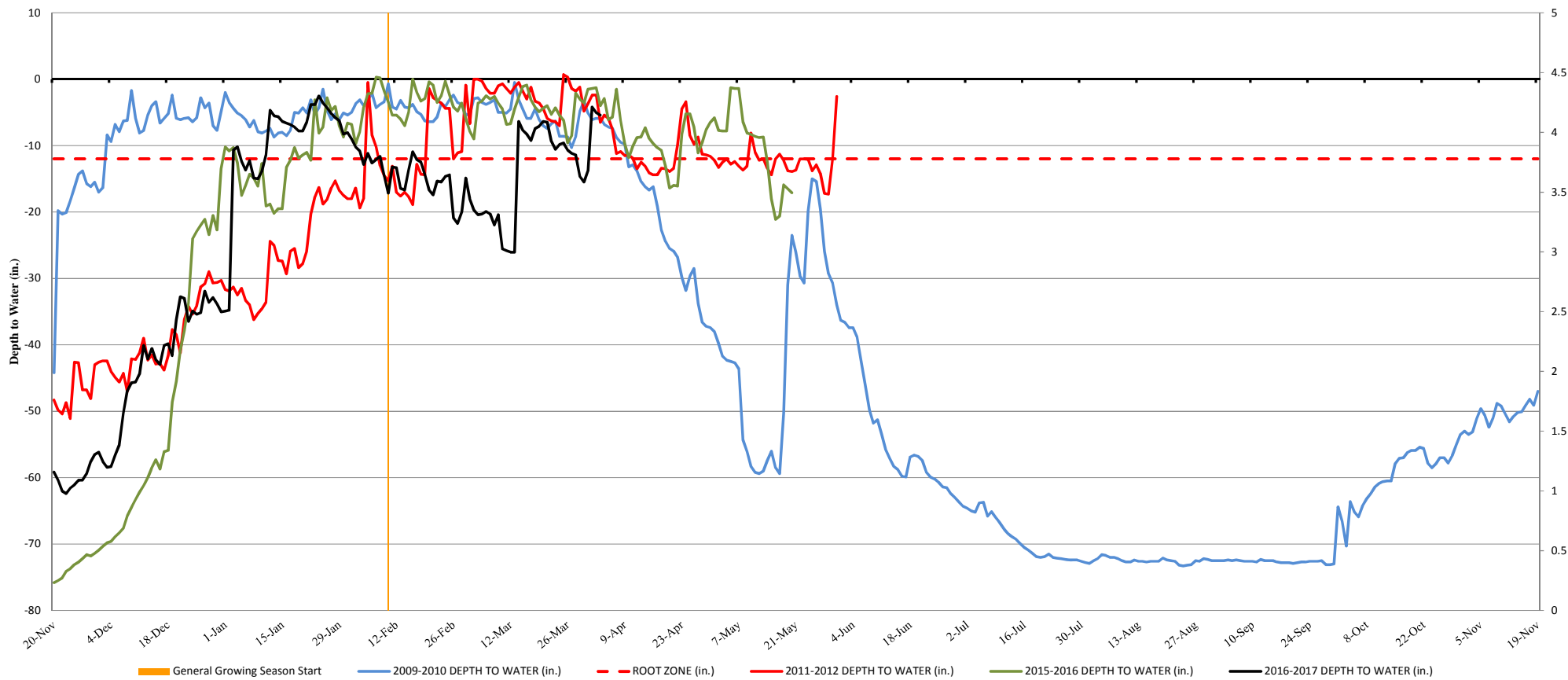
Su # 3
Combined years

2010 - 127 days

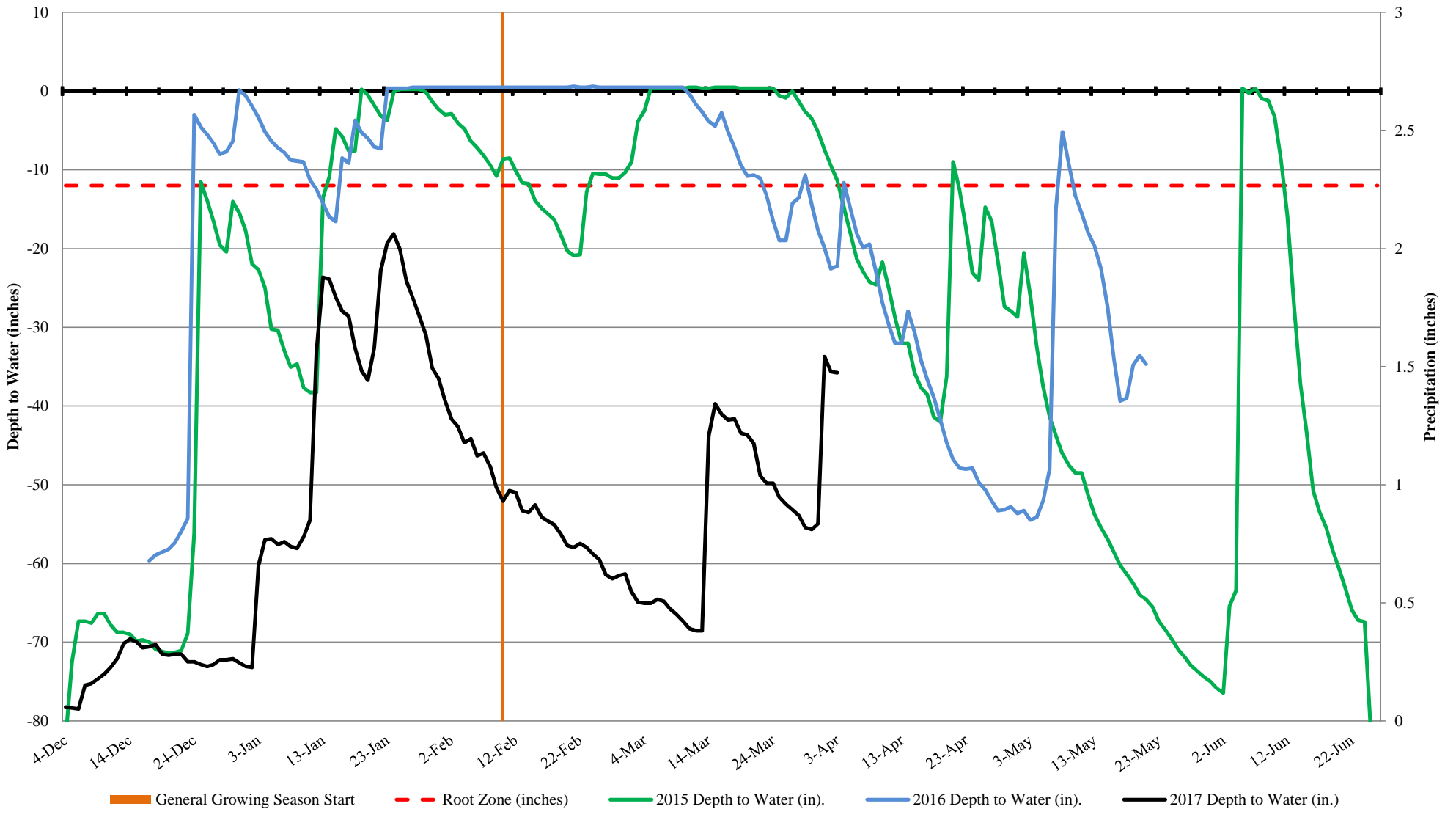
2016 - 91 days

2012 - 94 days

2017 - 23 days (14 days within growing season, 14-28 March 2017)



Wellington Park #1 - combo years
 2016 - 65 consecutive days (27 days in the GS; 23 Feb to 21 March 2016)
 2015 - 39 consecutive days (39 days in GS; 23 Feb to 03 April 2015)
 2017 - 0 days in growing season



BP Amoco Site Reference Well #1 Combined Years (2013 - 2016)

