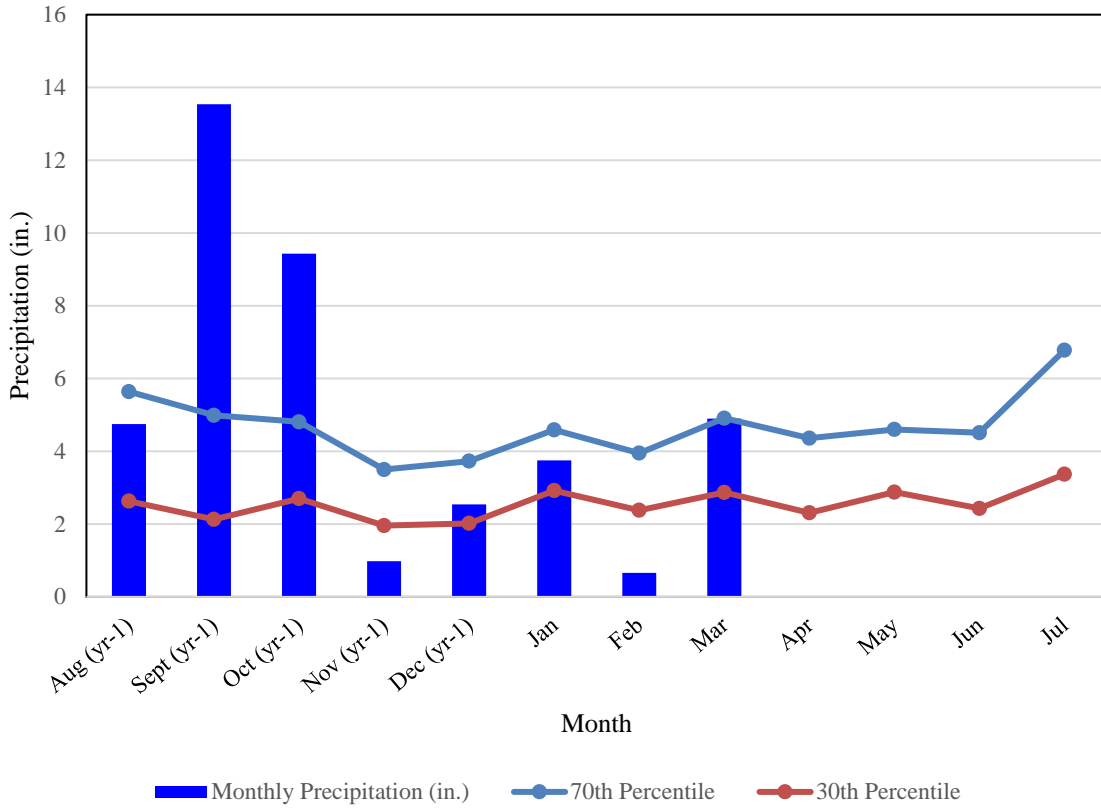
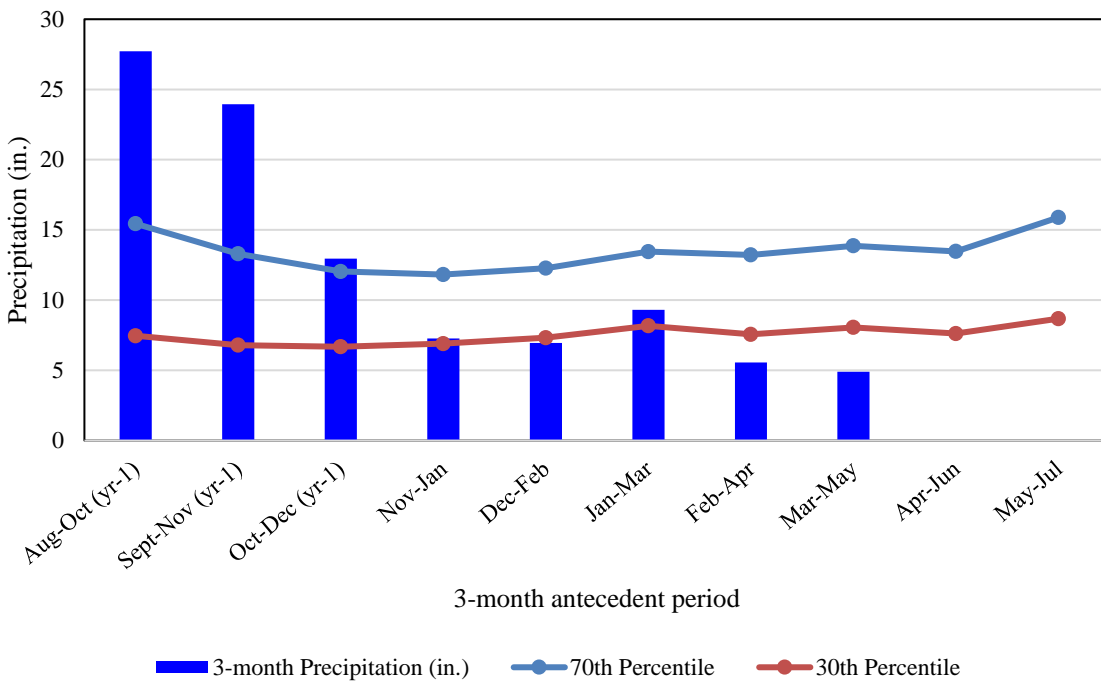


2016-2017 Norfolk Precipitation (as of 3 April 2017)



2016-2017 Norfolk Precipitation

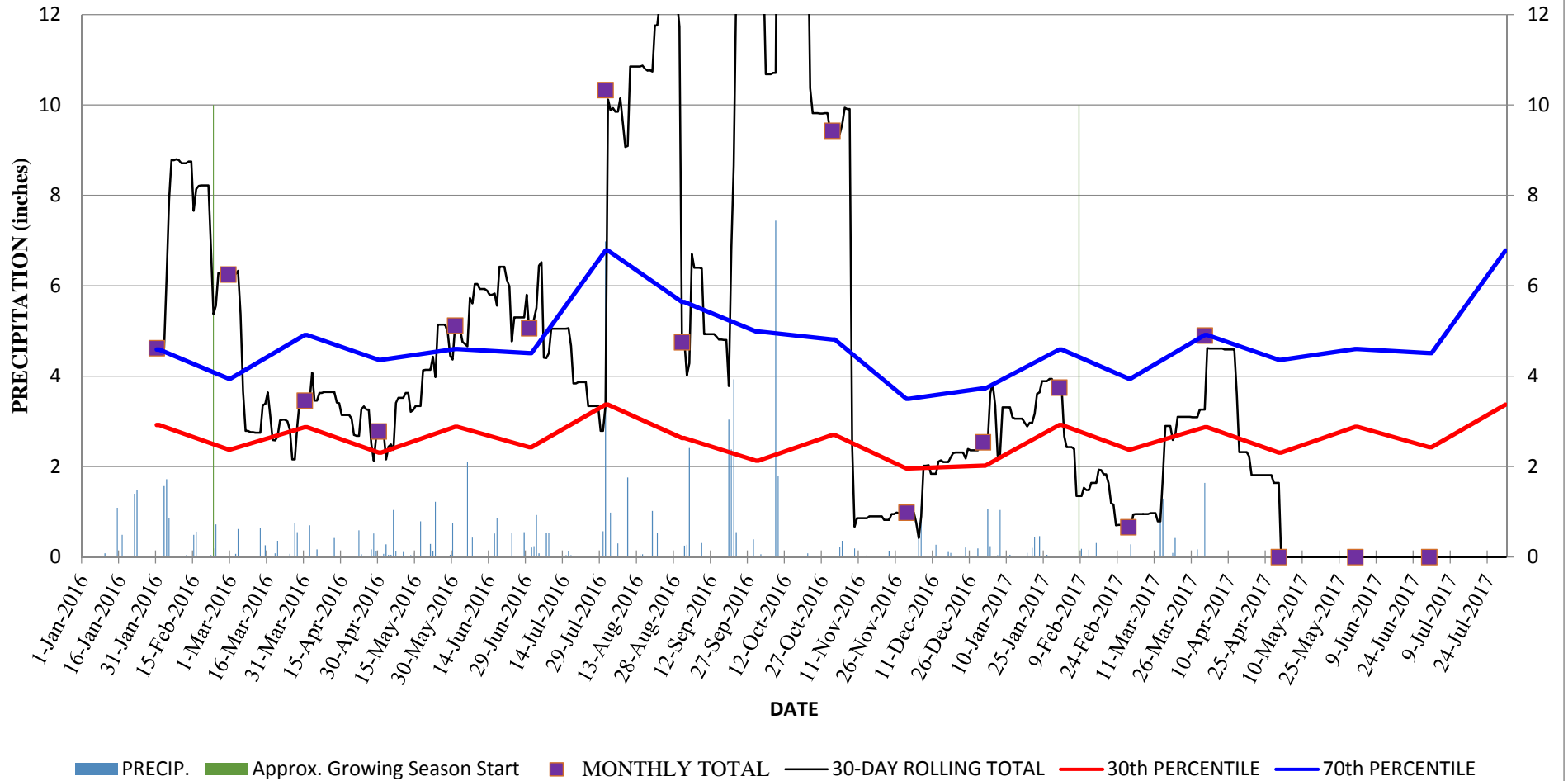
3-month antecedent
(as of 3 April 2017)



Norfolk Precipitation Trends

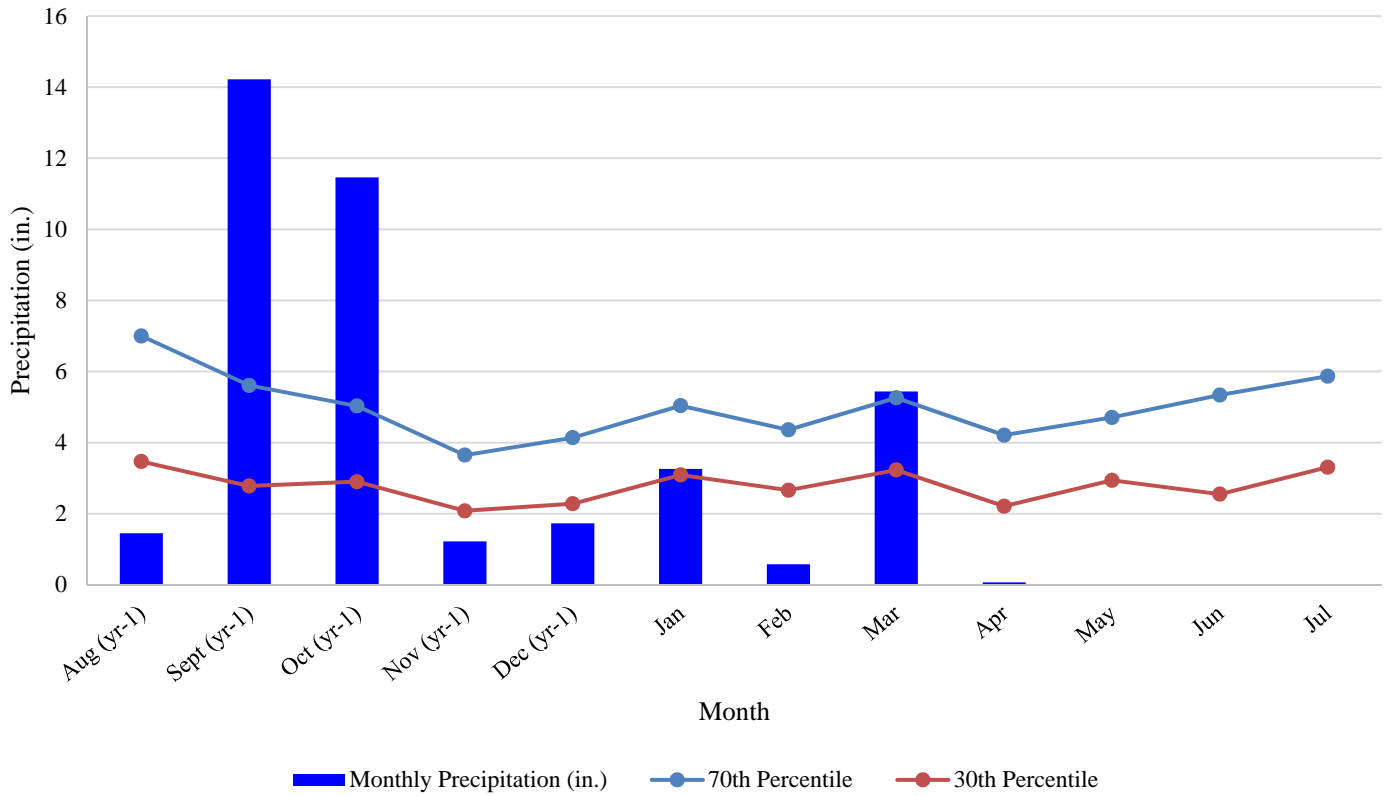
Jan 2016 to current (as of 03 April 2017)

30-day Rolling Totals, Monthly Totals, and 30th & 70th Percentiles



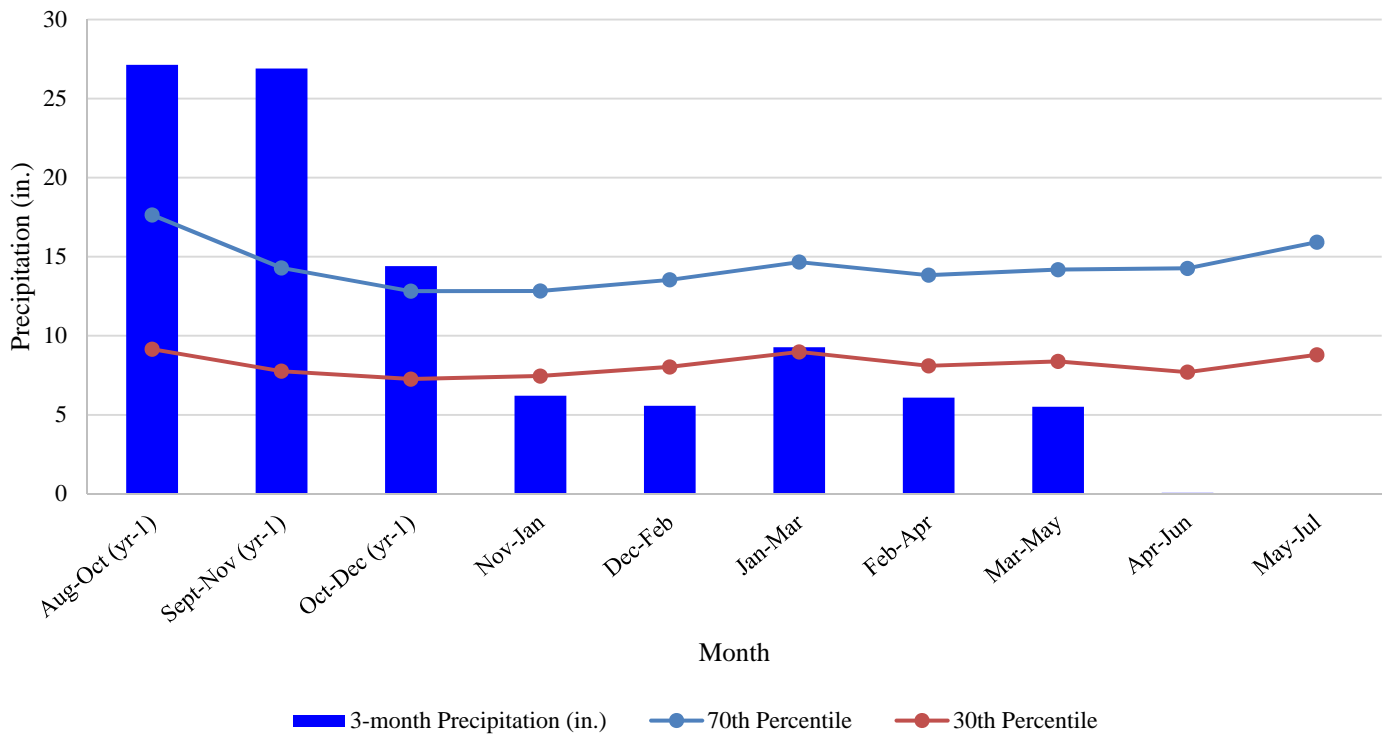
2016-2017 Lake Kilby Precipitation

(as of 03 April 2017)



2016-2017 Lake Kilby Precipitation

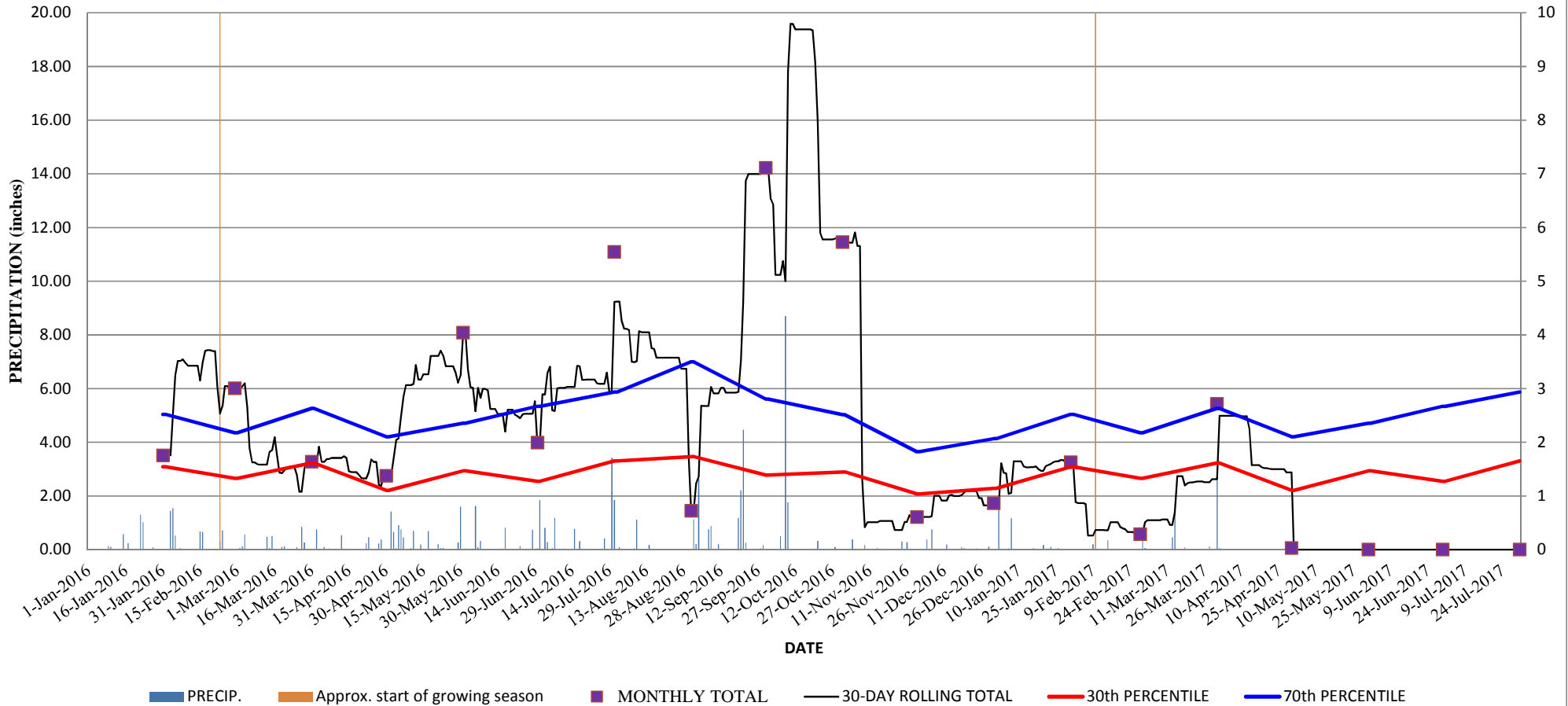
3-month antecedent
(as of 03 April 2017)



Lake Kilby Precipitation Trends

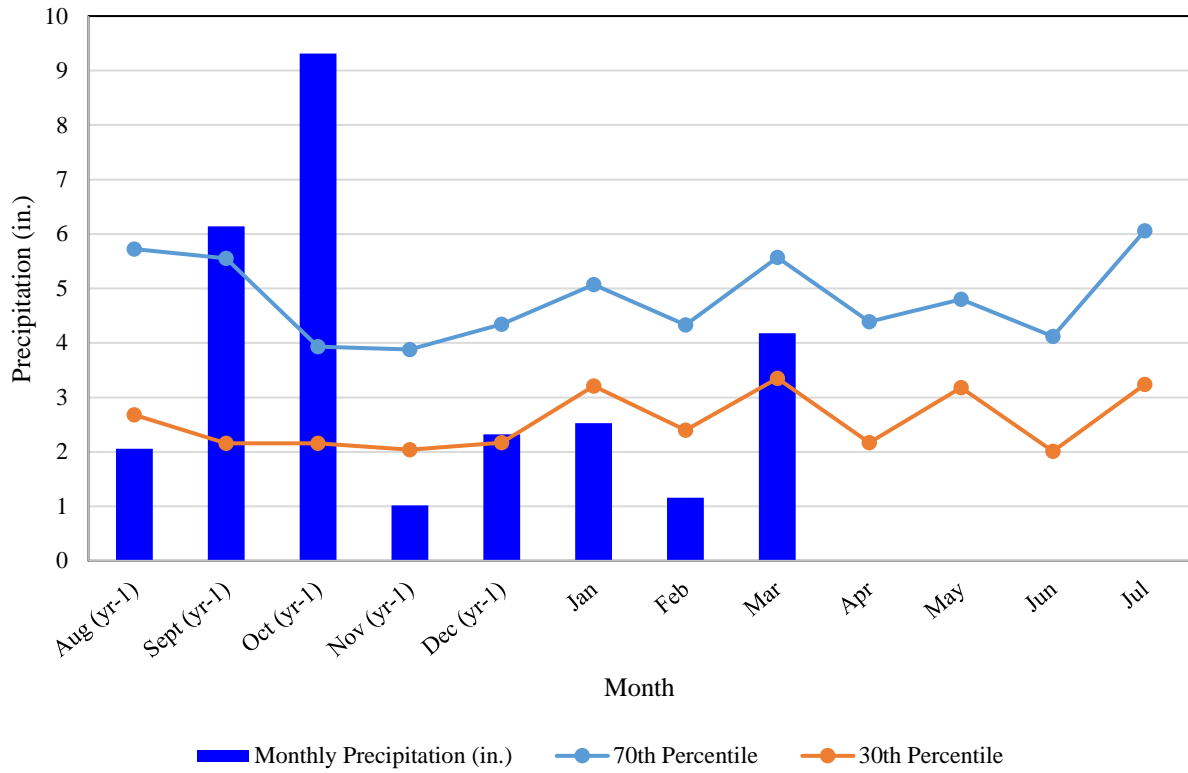
Jan 2016 thru **03 April 2017**

30-day Rolling Totals, Monthly Totals, and 30th & 70th Percentiles



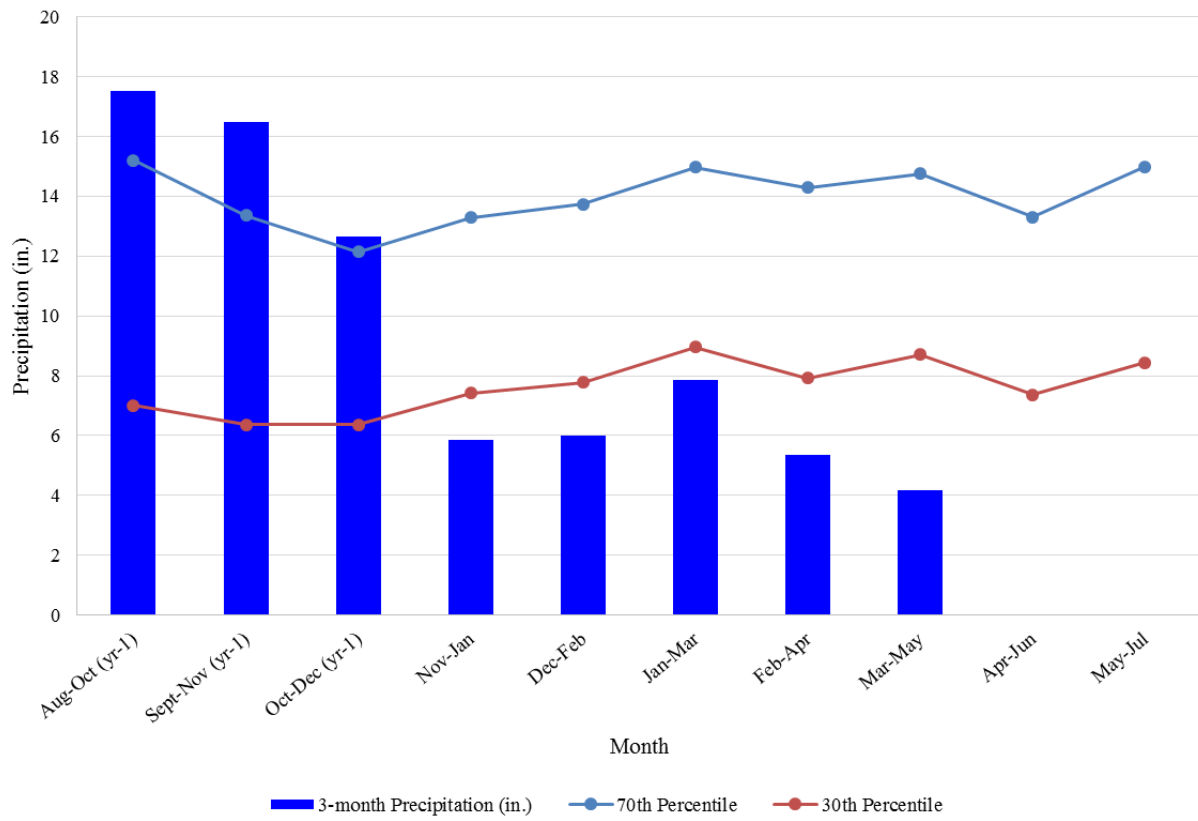
2016-2017 Langley Precipitation

(as of 03 APR 2017)



2016-2017 Langley Precipitation

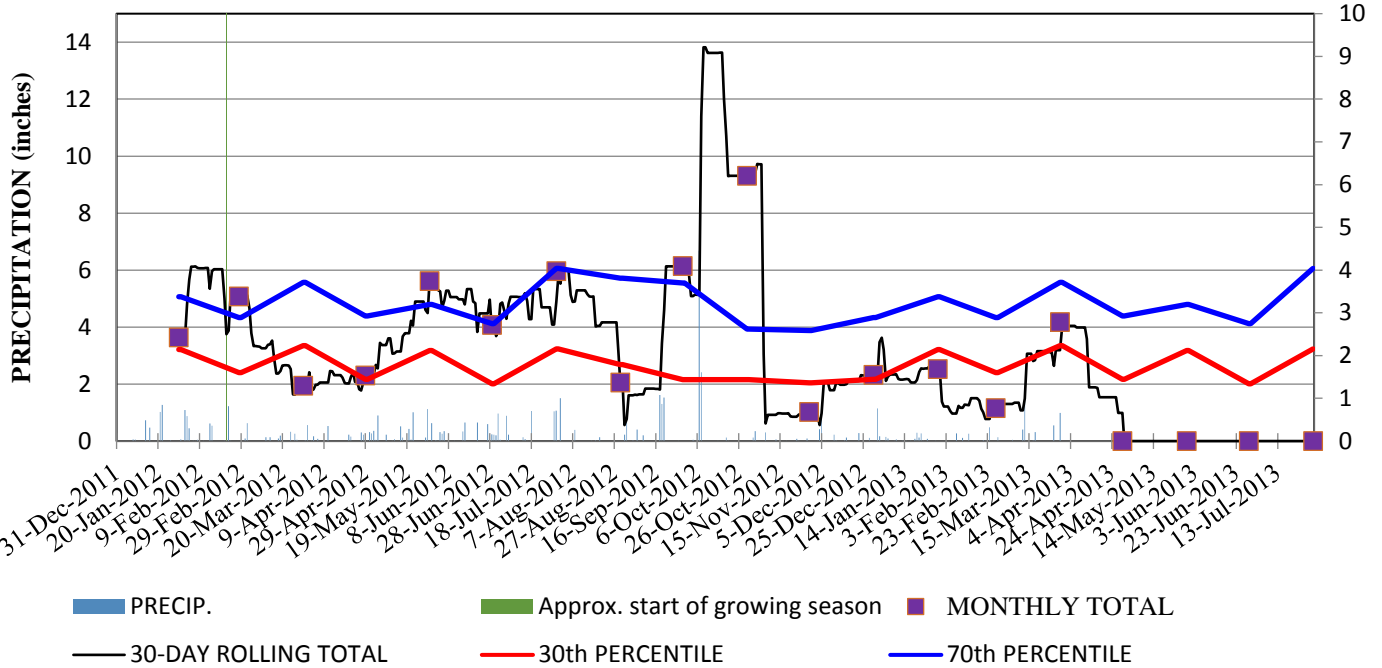
3-month antecedent
(as of 03 APR 2017)



Langley Precipitation Trends

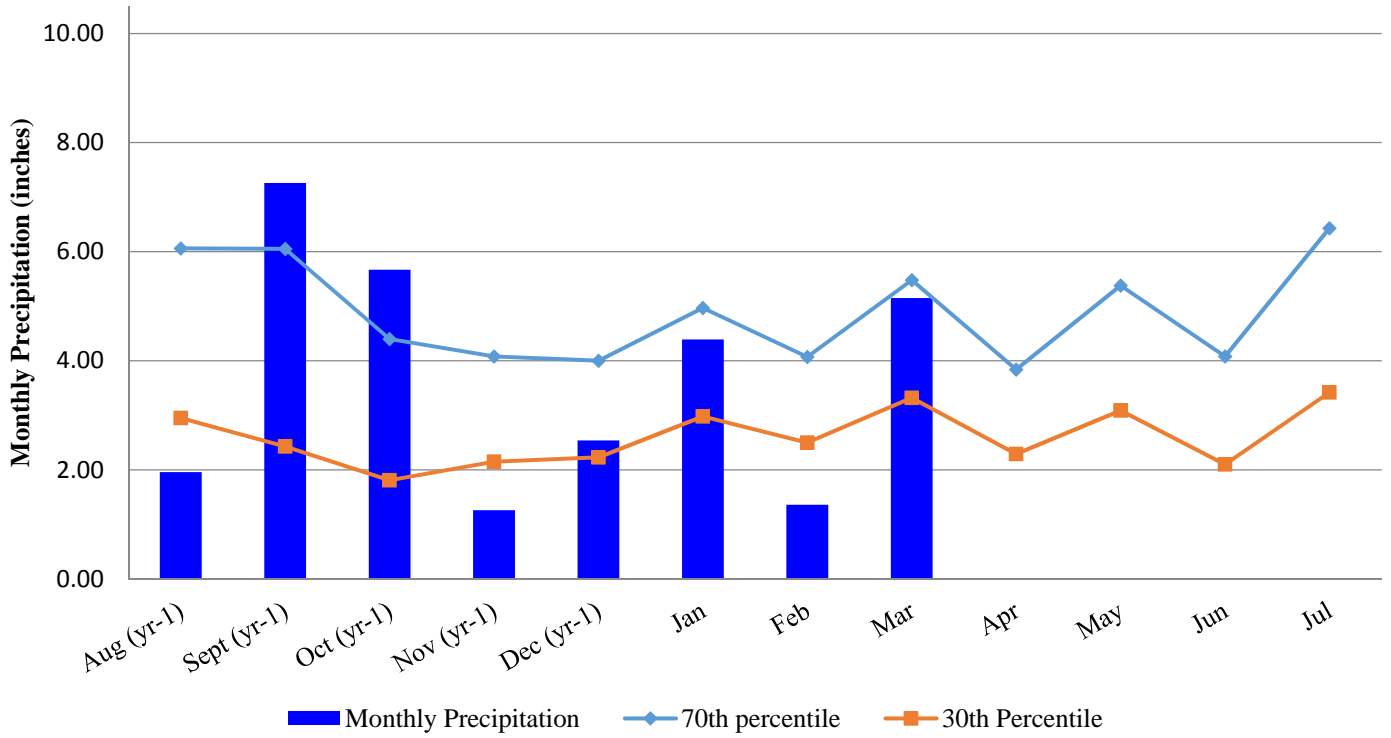
01 Jan 2016 to current (as of 1 APR 2017)

30-day Rolling Totals, Monthly Totals, and 30th & 70th Percentiles



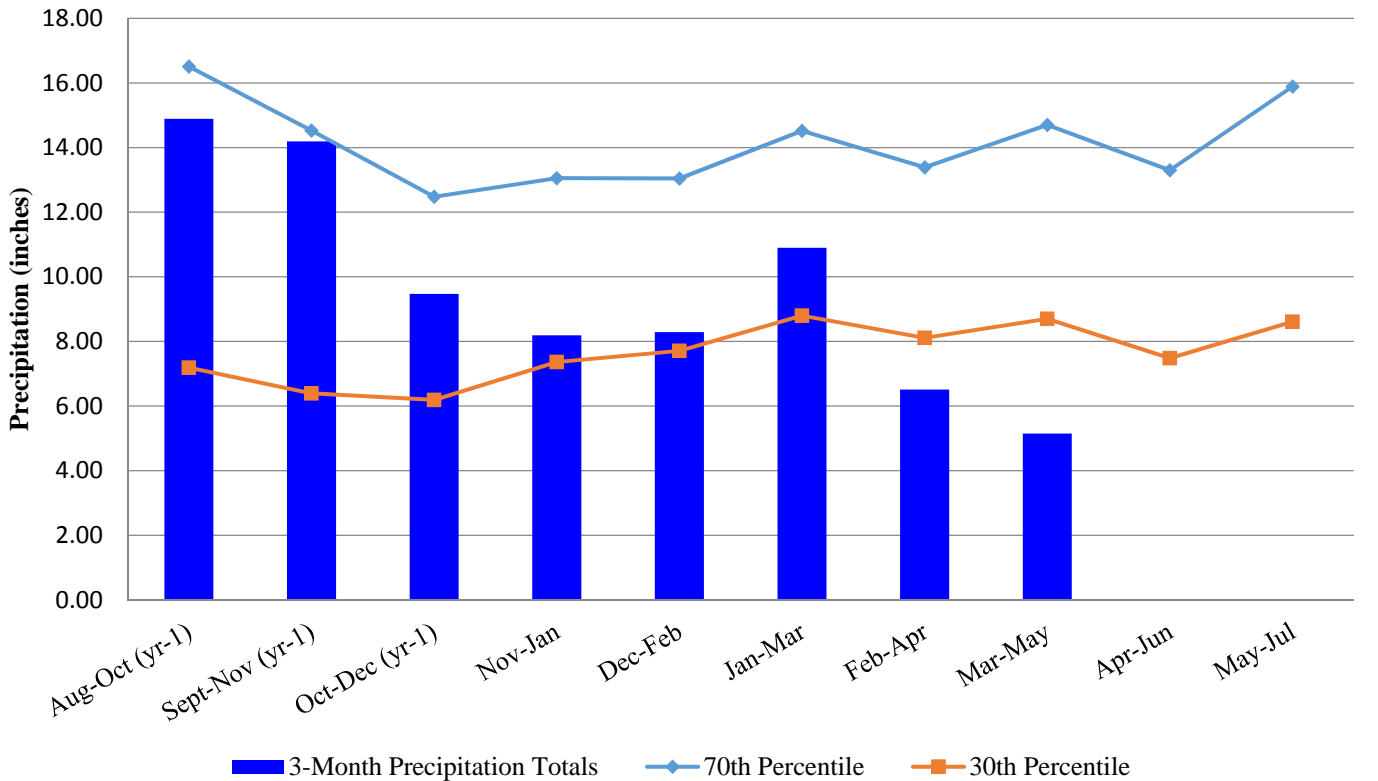
2016-2017 Williamsburg Precipitation

(as of 01 Apr 2017)



2016-2017 Williamsburg Precipitation

3-month antecedent (as of 01 Apr 2017)



Williamsburg 2N - Precipitation Trends

Jan 2016 to present (as of 01 Apr 2017)
30-day Rolling Totals, Monthly Totals, and 30th & 70th Percentiles

