

ROAD IMPACTS

TYPE #	WETLANDS (SQ. FT.)	W.O.U.S. (LENGTH X AVG. WIDTH)	COWARDIN CLASSIFICATION
R 1	887	—	PFO

TOTALS
WETLAND IMPACTS= 887 SQ. FT. = 0.02 AC.

DEVELOPMENT IMPACTS

TYPE #	WETLANDS (SQ. FT.)	W.O.U.S. (LENGTH X AVG. WIDTH)	COWARDIN CLASSIFICATION
D 1	380	—	PFO
D 2	12,540	(156' X 5.9')	PEM
D 3	540	(284' X 6')	PEM
D 4	250	(29' X 4')	PEM

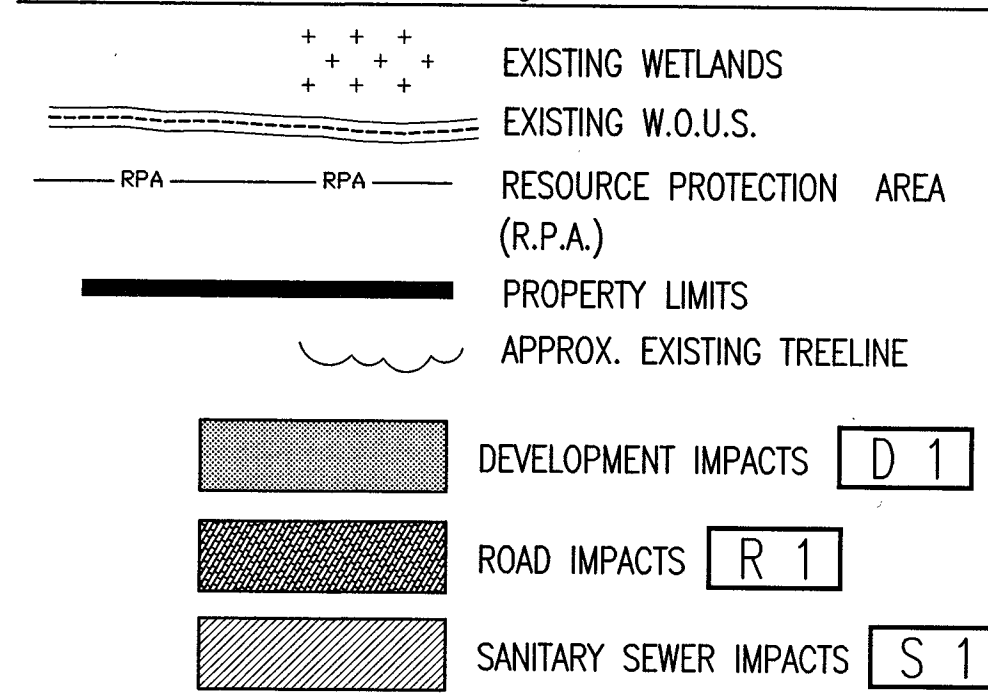
TOTALS
WETLAND IMPACTS= 13,710 SQ. FT. = 0.31 AC.
W.O.U.S. IMPACTS= 469 LF

SANITARY SEWER IMPACTS

TYPE #	WETLANDS (SQ. FT.)	W.O.U.S. (LENGTH X AVG. WIDTH)	COWARDIN CLASSIFICATION
S 1	367	(30' X 3.3')	PFO
S 2	209	—	PFO
S 3	789	—	PFO
S 4	326	—	PFO

TOTALS
WETLAND IMPACTS= 1,691 SQ. FT. = 0.04 AC.
W.O.U.S. IMPACTS= 30 LF

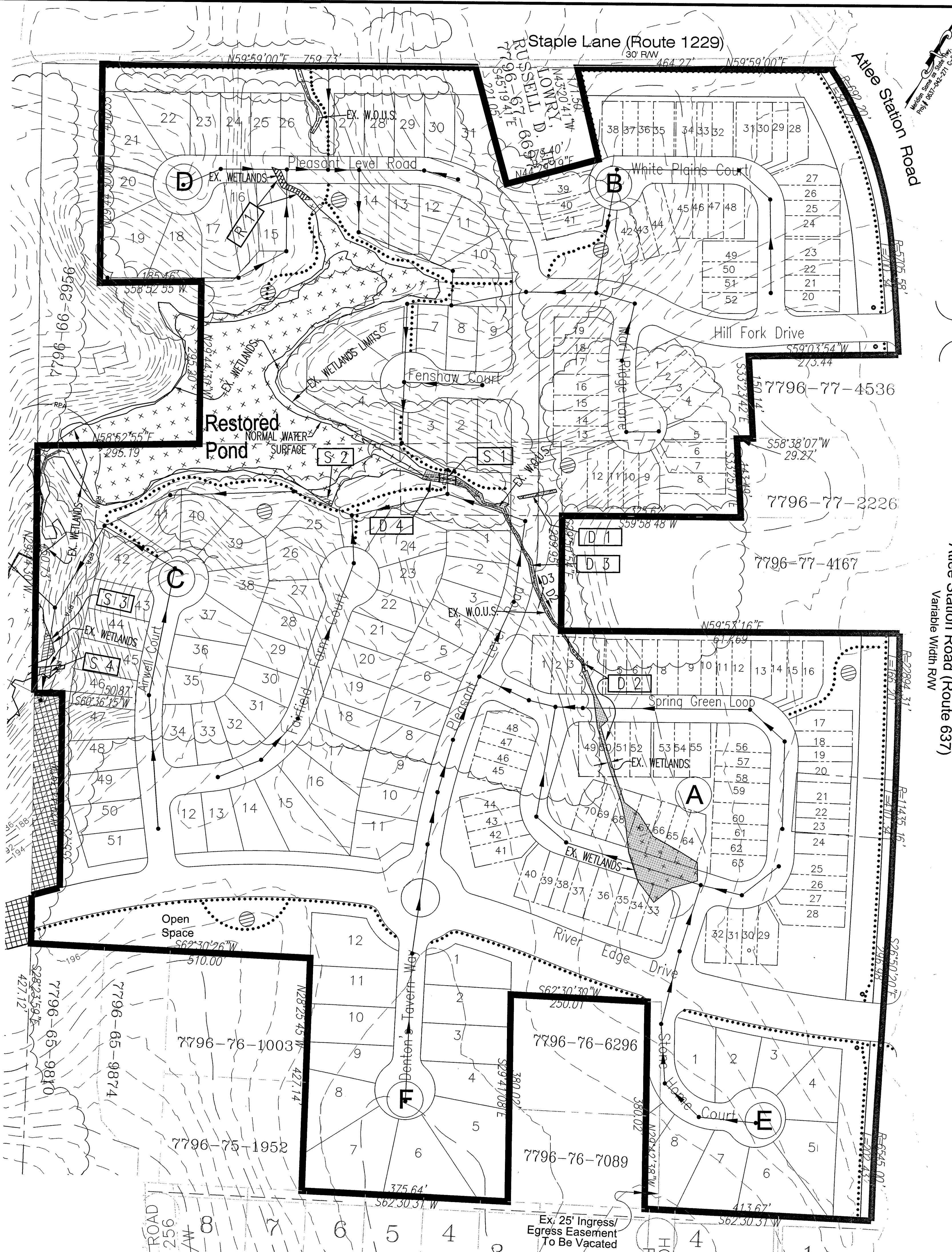
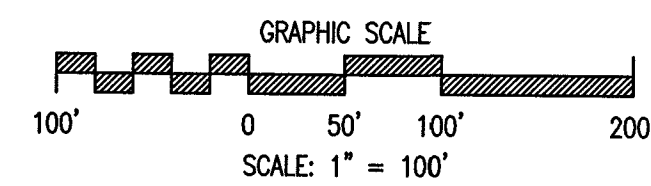
Legend:



TOTAL EXISTING WETLANDS/W.O.U.S.
WETLANDS= 51,803 SQ. FT. = 1.19 AC.
W.O.U.S.= 865 LF
OPEN WATER= 88,634 SQ. FT. = 2.03 AC.

GRAND TOTALS OF IMPACT
PFO WETLAND IMPACTS= 14,597 SQ. FT. = 0.33 AC.
PFO-PEM CONVERSION 1,691 SQ. FT.=0.04 AC.
W.O.U.S. IMPACTS= 499 LF

REMAINING WETLANDS/W.O.U.S.
WETLANDS= 35,515 SQ. FT. = 0.82 AC.
W.O.U.S.= 366 LF
OPEN WATER= 86,634 SQ. FT. = 2.03 AC.



E.D. LEWIS & ASSOCIATES, P.C.
 Consulting Engineers & Planners
 2116 Spenser Road - Richmond, VA 23220
 Phone: (804)285-3948 Fax: (804)282-1280

GILES FARM SUBDIVISION - PHASE I
PROPOSED DEVELOPMENT PLAN
 CHICKAHOMINY DISTRICT HANOVER COUNTY, VIRGINIA
 OVERALL SHEET

DATE: 1-12-17
 SCALE: 1"=100'
 DESIGNED: MKR
 DRAWN: GGL
 CHECKED: MKR

REVISIONS:
 ① 2-24-17 COMMENTS
 ② 3-23-17 COMMENTS

J.N. 21291
 SHEET 1 OF 1