

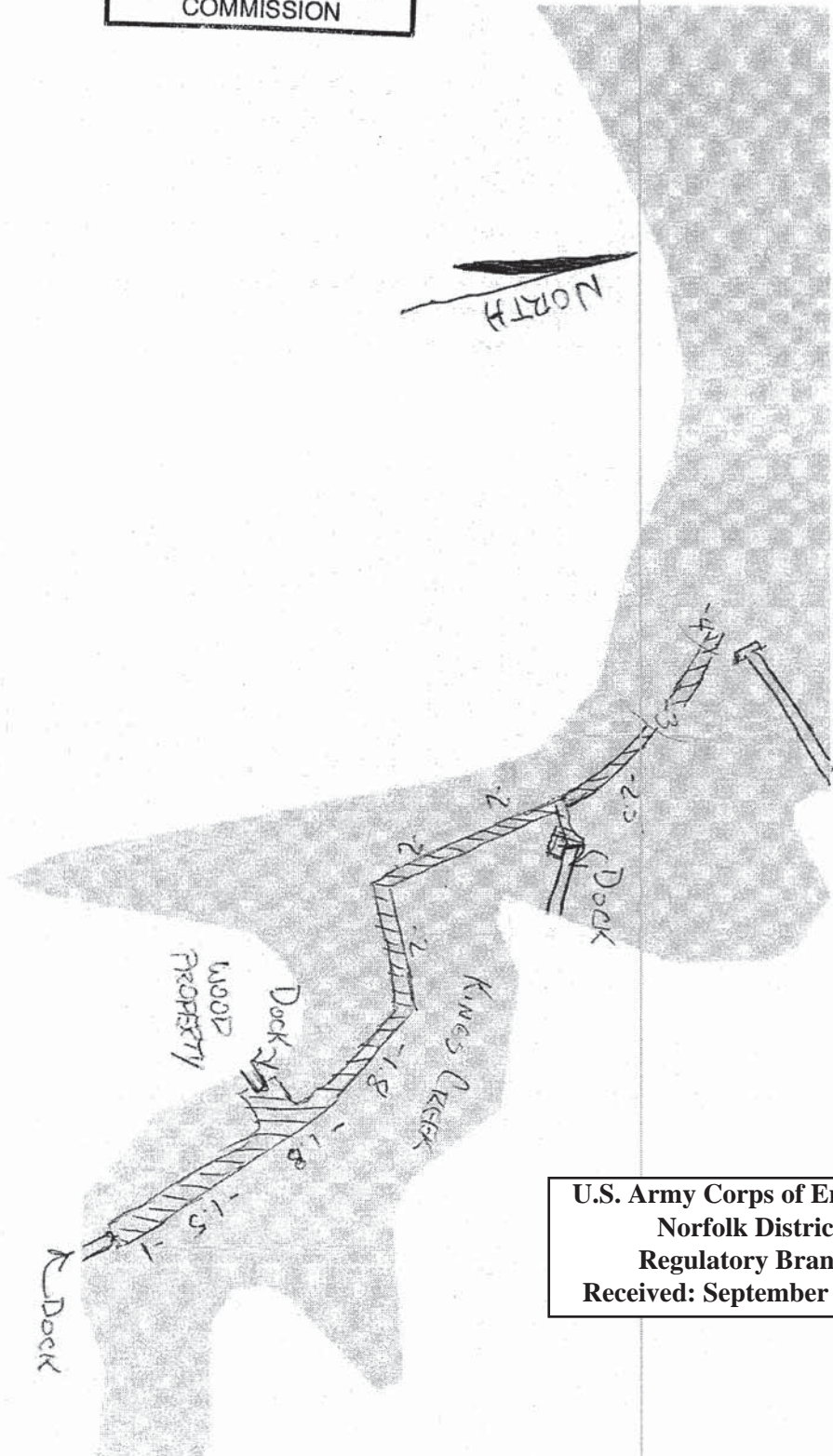
ADDITIONAL INFO
REVISION

RECEIVED

SEP 08 2016

MARINE RESOURCES
COMMISSION

Google



Search

U.S. Army Corps of Engineers
Norfolk District
Regulatory Branch
Received: September 8, 2016

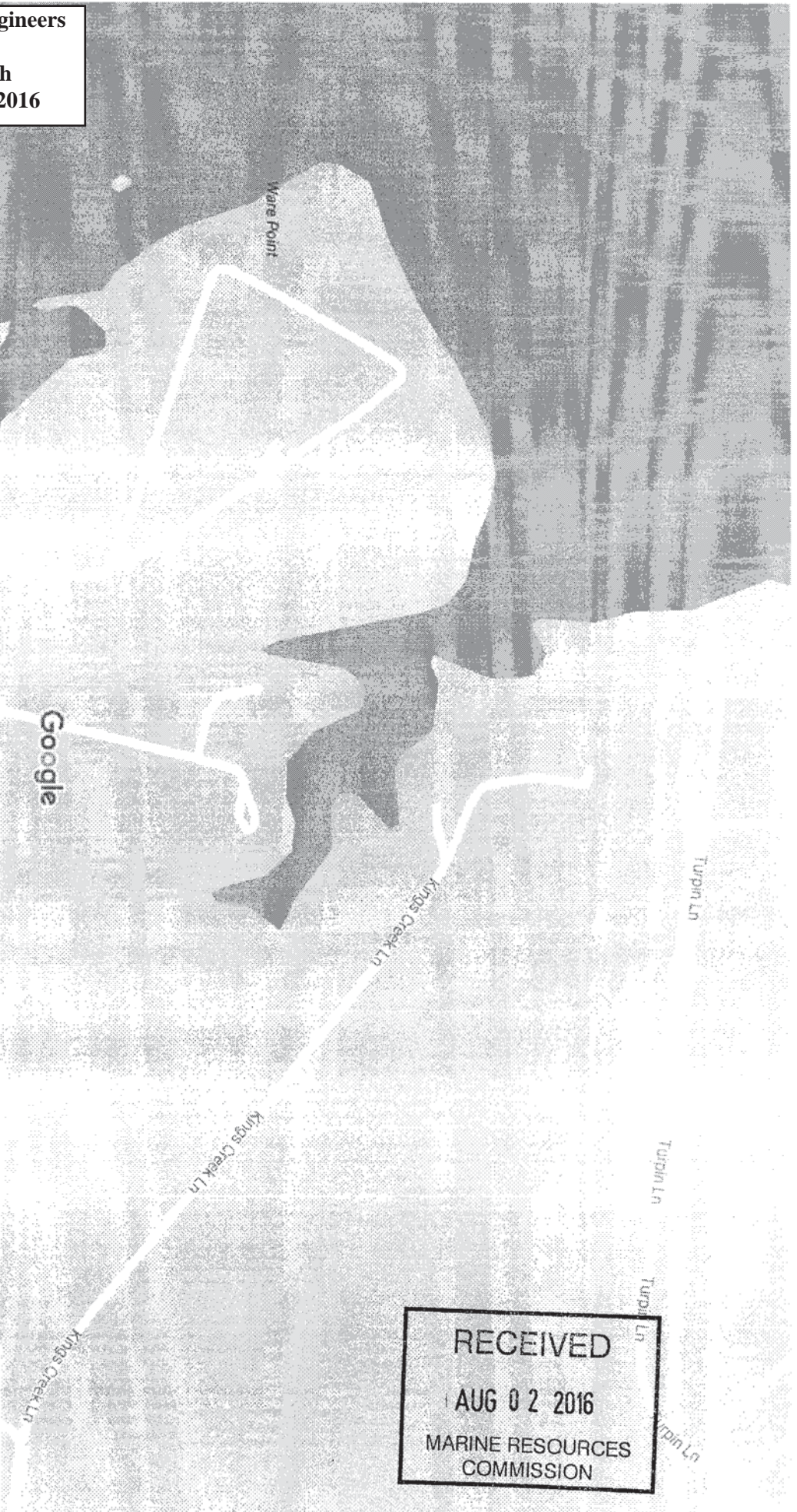
Map - Report a map error

KEDDIE WOOD - FREDDIE'S SURVEY - READINGS ARE BASED
ON "0" LOW WATER
MATHEWS COUNTY - KINES CREEK

DATE 11-16

Google Maps Port Haywood

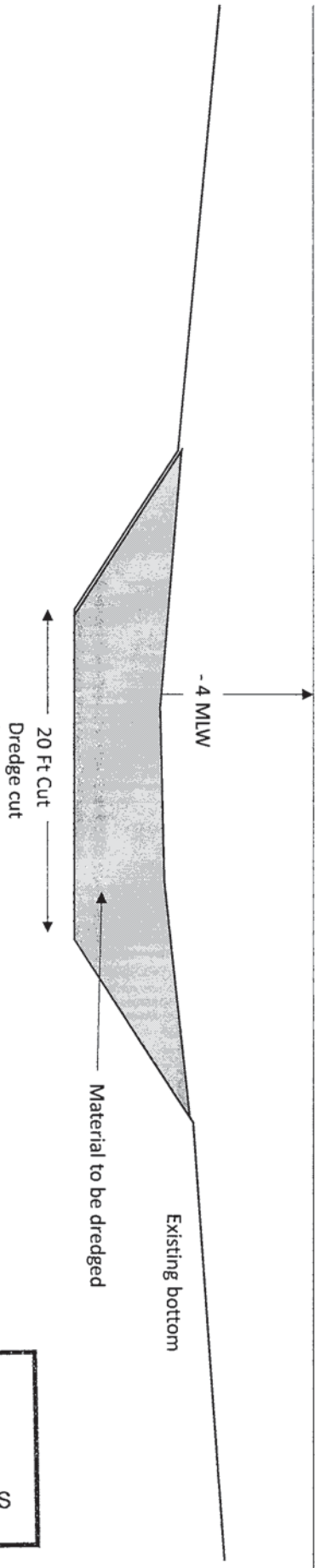
U.S. Army Corps of Engineers
Norfolk District
Regulatory Branch
Received: August 2, 2016



U.S. Army Corps of Engineers
Norfolk District
Regulatory Branch
Received: August 2, 2016

	Kings Creek dredging	By Harbor Dredge & Dock	Location: Kings Creek Port Haywood VA	
--	----------------------	-------------------------	---	--

SECTION B-B



RECEIVED
AUG 02 2016
MARINE RESOURCES
COMMISSION

RECEIVED

AUG 02 2016

MARINE RESOURCES
COMMISSION

Kings Creek dredging

By Harbor Dredge & Dock

Location:
Kings Creek
Port Haywood VA

U.S. Army Corps of Engineers
Norfolk District
Regulatory Branch
Received: August 2, 2016



RECEIVED

AUG 02 2016

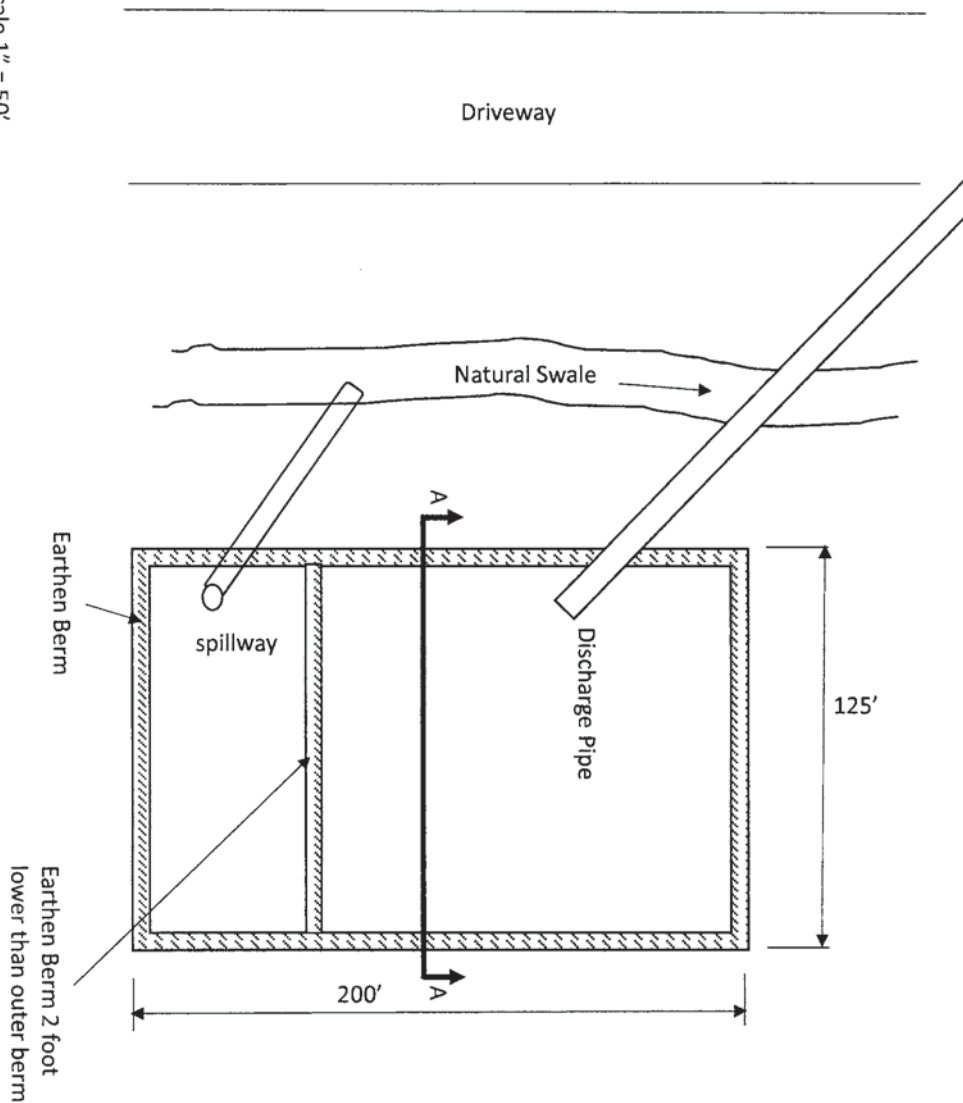
MARINE RESOURCES
COMMISSION

Kings Creek dredging

By Harbor Dredge & Dock

Location:
Kings Creek
Port Haywood VA

Scale 1" = 50'



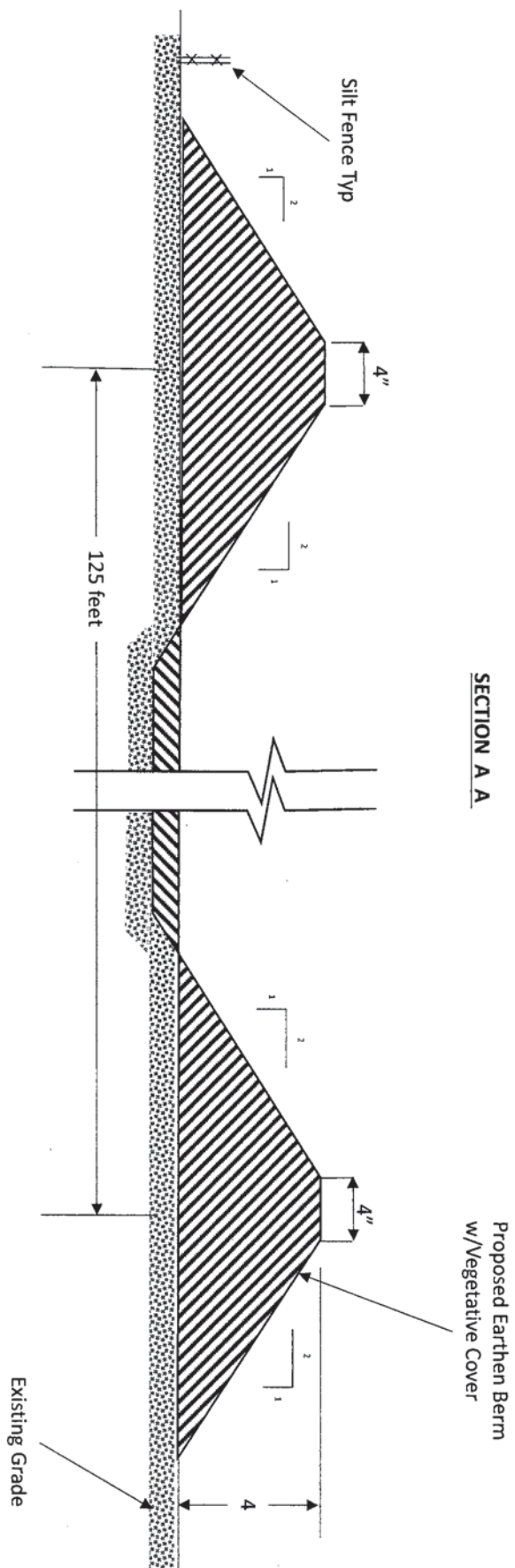
U.S. Army Corps of Engineers
Norfolk District
Regulatory Branch
Received: August 2, 2016

Kings Creek dredging

By Harbor Dredge & Dock

Location:
Kings Creek
Port Haywood VA

SECTION A A



Disposal Site Calculations

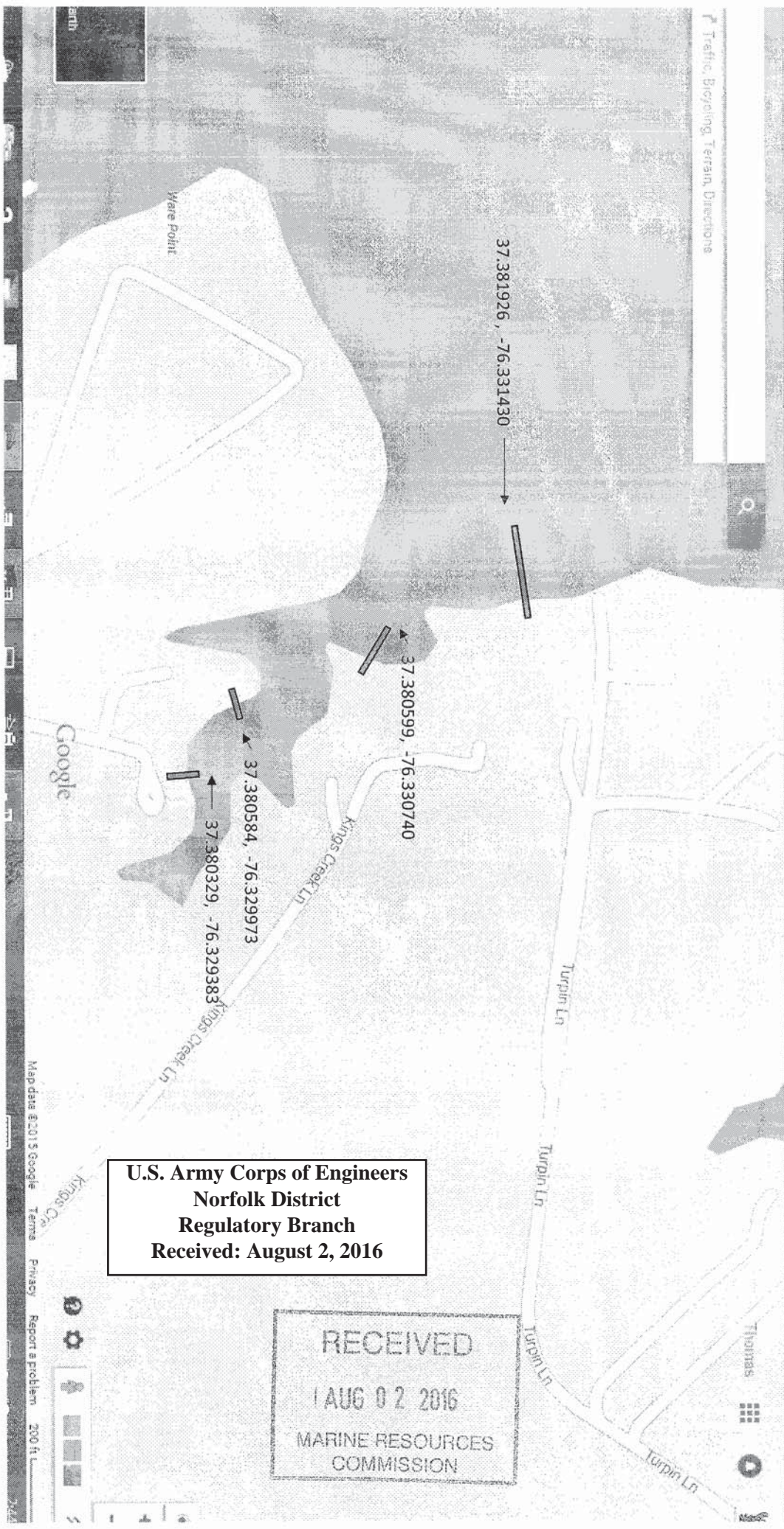
1. Dredging Volume: 1608 cy
2. Disposal site Volume: 2777

RECEIVED

AUG 02 2016

MARINE RESOURCES
COMMISSION

U.S. Army Corps of Engineers
Norfolk District
Regulatory Branch
Received: August 2, 2016



U.S. Army Corps of Engineers
Norfolk District
Regulatory Branch
Received: August 2, 2016

RECEIVED
1 AUG 02 2016
MARINE RESOURCES
COMMISSION

RECEIVED

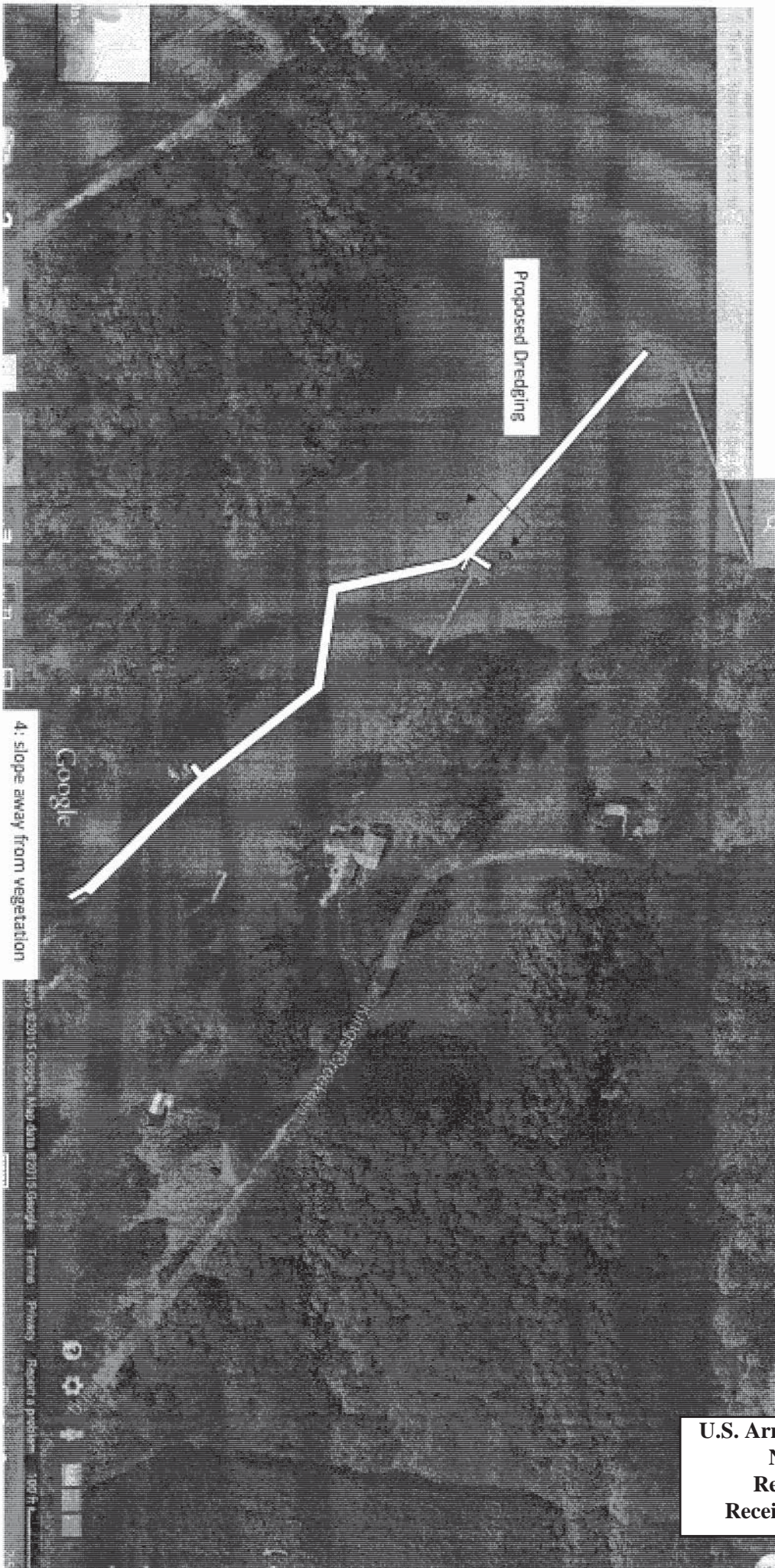
AUG 02 2016

MARINE RESOURCES
COMMISSION

Kings Creek dredging

by Harbor Dredge & Dock

Location:
Kings Creek
Port Haywood VA



Proposed Dredging

4: slope away from vegetation

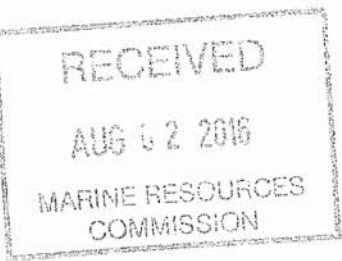
U.S. Army Corps of Engineers
Norfolk District
Regulatory Branch
Received: August 2, 2016

Google Maps Port Haywood



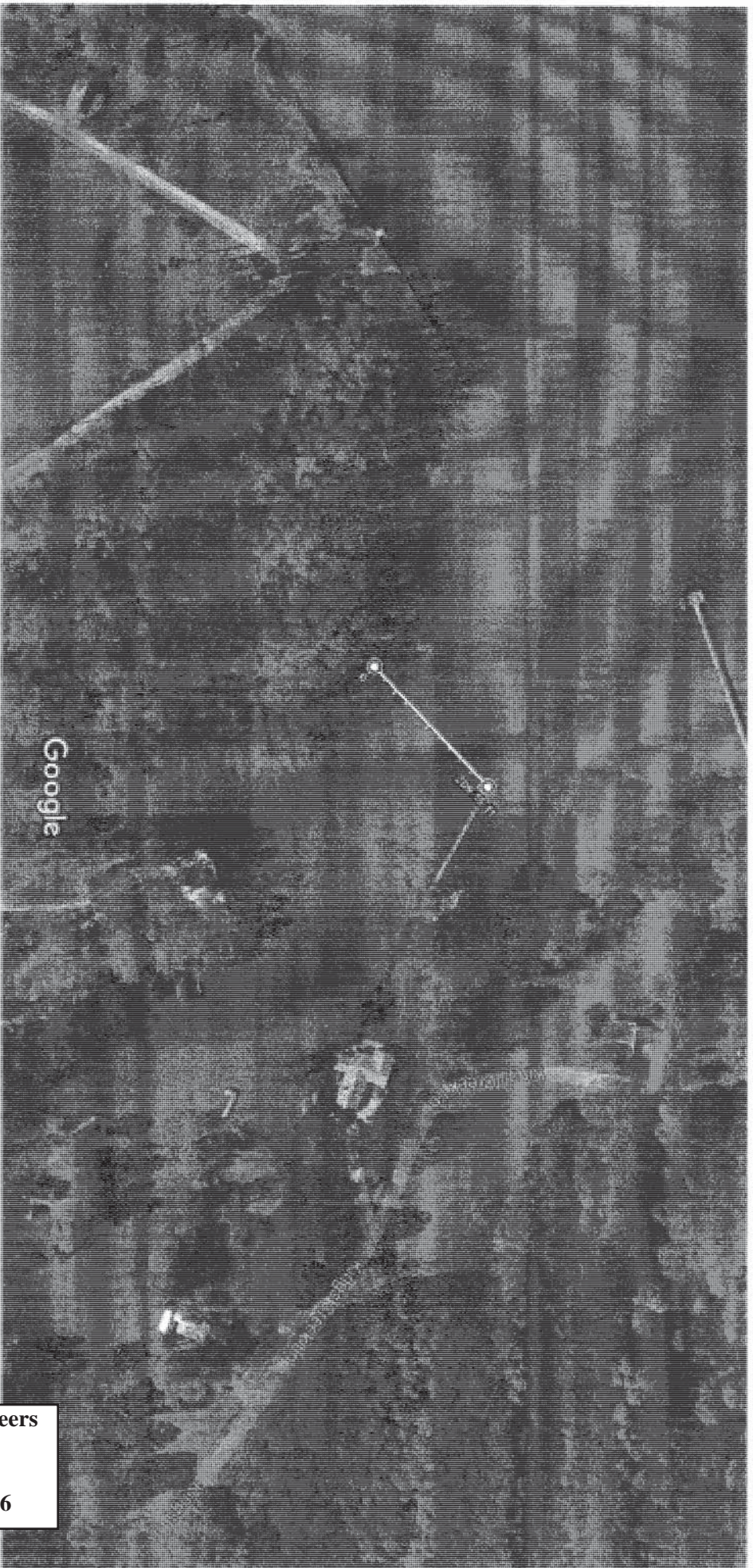
Measure distance
Total distance: 134.25 ft (40.92 m)

Imagery ©2016 Google, Map data ©2016 Google 100 ft



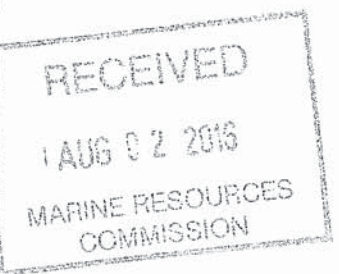
U.S. Army Corps of Engineers
Norfolk District
Regulatory Branch
Received: August 2, 2016

Google Maps Port Haywood



Measure distance
Total distance: 209.15 ft (63.75 m)

Imagery ©2016 Google, Map data ©2016 Google 100



U.S. Army Corps of Engineers
Norfolk District
Regulatory Branch
Received: August 2, 2016