




Legend

 Approximate Project Limits on NOAA

Copyright:© 2013 National Geographic Society, i-cubed

Approved for Release by NSA on 08-08-2013 pursuant to E.O. 13526

 Dewberry ®		DATE <i>August 2016</i>	TITLE <i>Topographic Map</i>	FIGURE 1
		PROJ. NO. 50079928	PROJECT <i>Route 606 Permit Modification Proposed NOAA Improvements</i>	

VWP Permit No. 15-0076: Major Modification Project Location Map



ROUTE 606 PERMIT MODIFICATION
PROPOSED NOAA IMPROVEMENTS
WOUS/WETLAND IMPACT MAP



Date : JULY 2016

Scale : 1" = 250"

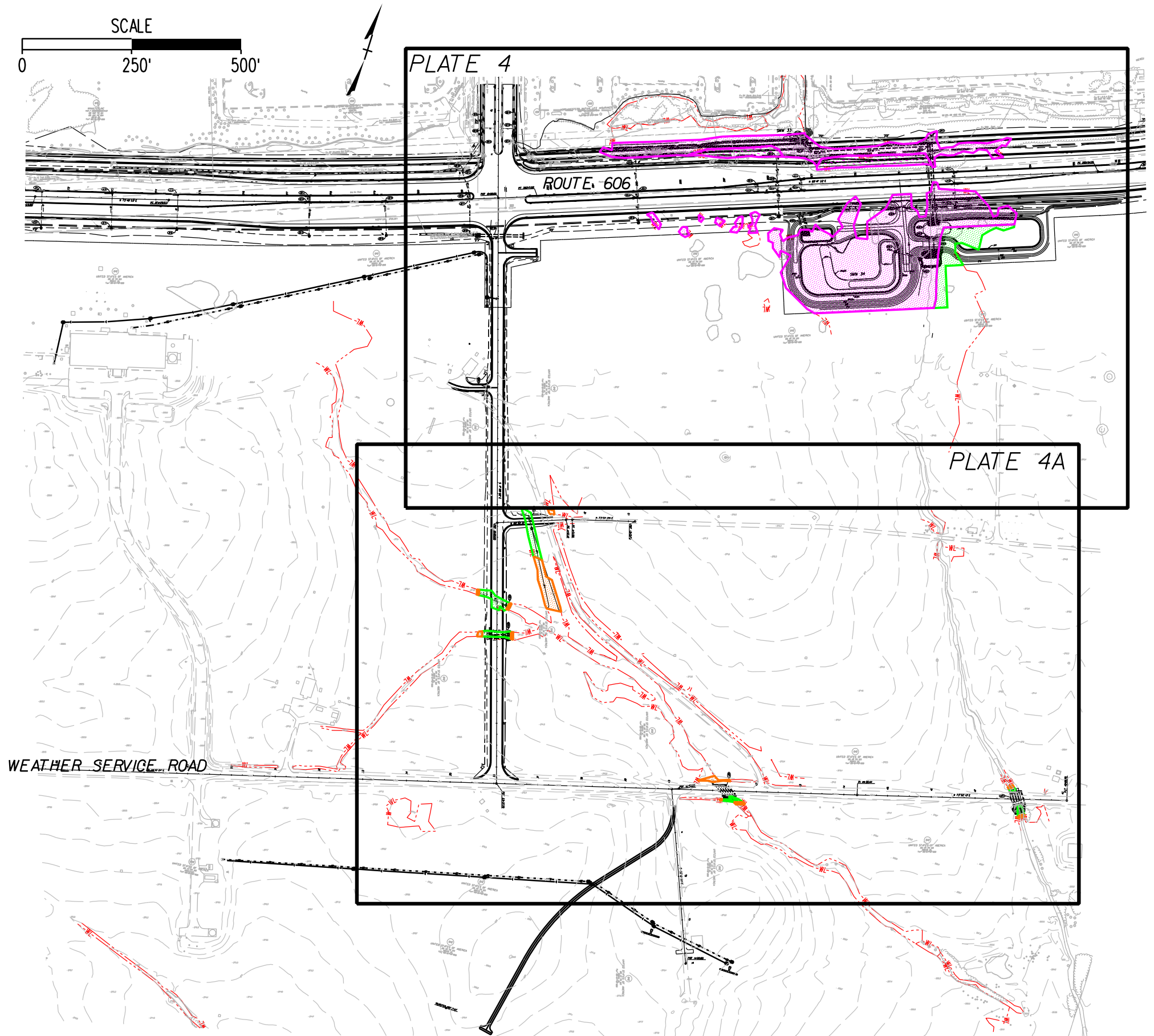
Sheet : 1 of 3

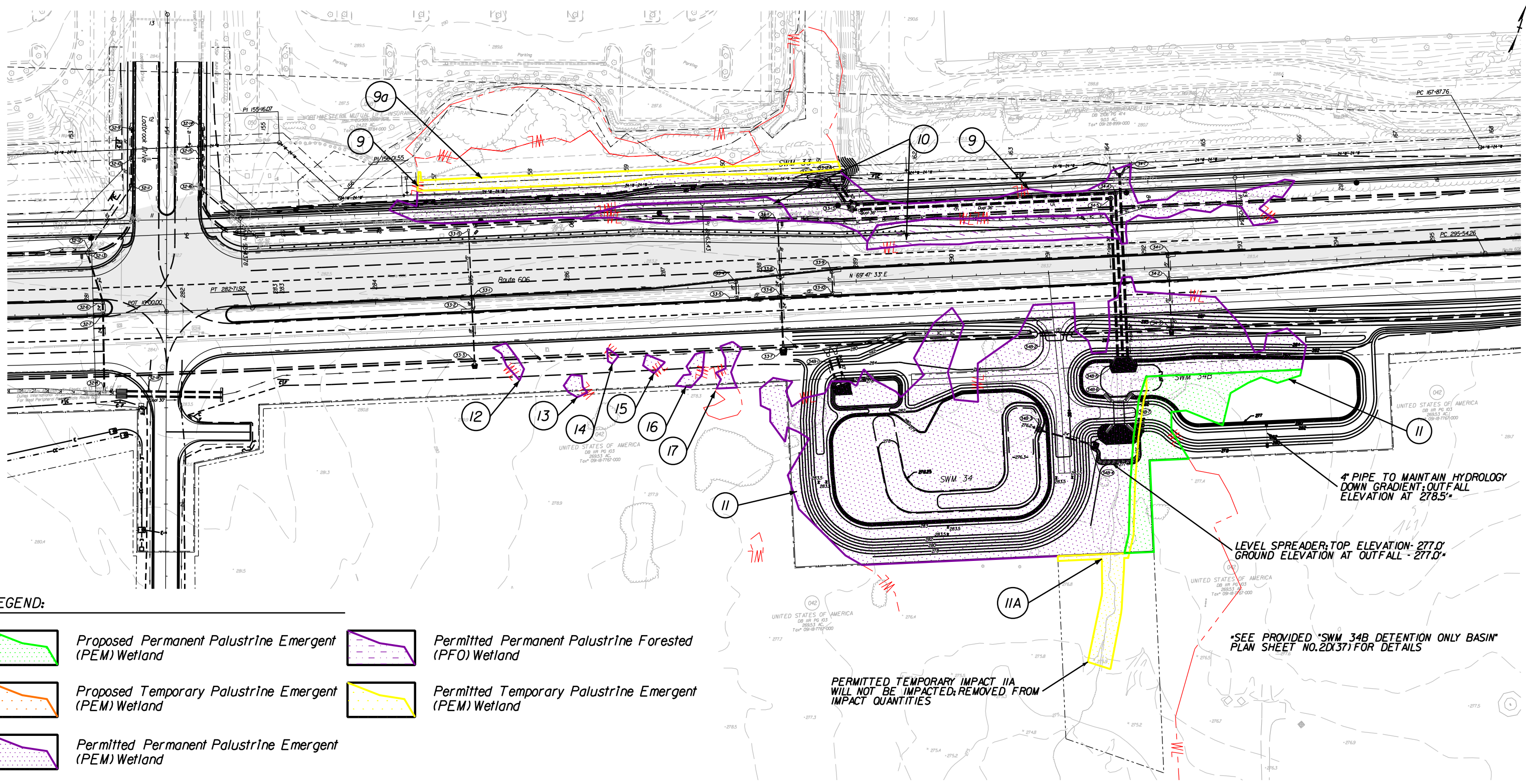
REVISED PLATE 4 AND PLATE 4A DEMARCATe IMPACTS TO WETLANDS AND STREAMS RESULTING FROM THE PROPOSED IMPROVEMENTS ON NOAA PROPERTY. DEWBERRY IS REQUESTING TO MODIFY THE EXISTING ROUTE 606 CORPS INDIVIDUAL PERMIT AND DEQ INDIVIDUAL PERMIT 15-0076.

REVISED Waters of the U.S. and Wetland Impacts (06-27-16) NOAA MOD (Impact area are in addition to previously permitted and don't include impact quantities for systems previously permitted)

Impact Number	*Type	Plate	Cowardin Classification	Waters Description	WOUS Length (Linear Feet)	Area (Sq. Ft.)	Area (Acre)
11	PE	4&NOAA	PEM	J		9,088	0.209
11a	TE	4&NOAA	PEM	J		0	0.000
41	PE	NOAA	PEM	N-A		1,935	0.044
41a	TE	NOAA	PEM	N-A		3,131	0.072
42	TE	NOAA	PEM	N-CC		129	0.003
43	PE	NOAA	PEM	N-C		1,394	0.032
43a	TE	NOAA	PEM	N-C		140	0.003
44	PE	NOAA	PEM	N-CA		825	0.019
44a	TE	NOAA	PEM	N-CA		206	0.005
45	PE	NOAA	R4	N-D	18	119	0.003
45a	TE	NOAA	R4	N-D	7	55	0.001
46	PE	NOAA	PEM	N-DB		89	0.002
46a	TE	NOAA	PEM	N-DB		53	0.001
47	PE	NOAA	PEM	N-E		90	0.002
47a	TE	NOAA	PEM	N-E		13	0.000
48	TE	NOAA	PEM	N-C		373	0.009
49	PE	NOAA	PEM	N-J		369	0.008
49a	TE	NOAA	PEM	N-J		143	0.003

Permanent Impacts (PE)	PEM	13,790	0.317
	PFO	0	0.000
	PSS	0	0.000
	POW	0	0.000
	WOUS (R3)	0	0.000
	WOUS (R4)	18	0.003
	EPH	0	0.000
TOTAL PERMANENT WETLAND		13,790	0.32
TOTAL PERMANENT WOUS		18	0.00
Temporary Impacts (TE)	PEM	4,188	0.096
	PFO	0	0.000
	POW	0	0.000
	WOUS (R3)	0	0.000
	WOUS (R4)	7	0.001
	EPH	0	0.000
TOTAL TEMPORARY WETLAND		4,188	0.10
TOTAL TEMPORARY WOUS		7	0.00
TOTAL WOUS/WETLAND IMPACTS (TEMPORARY AND PERMANENT) WOUS IMPACTS		25	0.42





LEGEND:

- Proposed Permanent Palustrine Emergent (PEM) Wetland
- Proposed Temporary Palustrine Emergent (PEM) Wetland
- Permitted Permanent Palustrine Emergent (PEM) Wetland
- Permitted Permanent Palustrine Forested (PFO) Wetland
- Permitted Temporary Palustrine Emergent (PEM) Wetland

Impact Number

**RT 606
WOUS/WETLAND IMPACTS**

Date : JULY 2016
 Scale : 1" = 100'
 Sheet : 2 of 3

9	PE	4	PEM	I	27,168	0.624
9a	TE	4	PEM	I	4,430	0.102
10	PE	4	PFO	IA	10,119	0.232
11	PE	4	PEM	J	95,620	2.195
11a	TE	4	PEM	J	0	0.000
12	PE	4	PEM	JA	464	0.011
13	PE	4	PEM	JB	349	0.008
14	PE	4	PEM	JC	104	0.002
15	PE	4	PEM	JD	235	0.005
16	PE	4	PEM	JE	528	0.012
17	PE	4	PEM	JF	667	0.015

REVISED JUNE 2016:
 - Removed Permitted Temporary Impact 11a
 - Extended Permitted Permanent Impact 11
 Adjacent Impact Tables Include Previously Permitted Impact 11 (86,532 SF) and Proposed Additional Impact (9,088 SF).

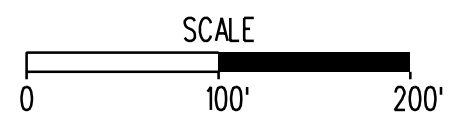


Plate 4

RT 606
WOUS/WETLAND IMPACTS



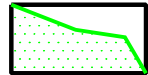
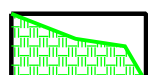
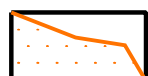
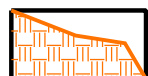
Plate 4a

Date : JULY 2016

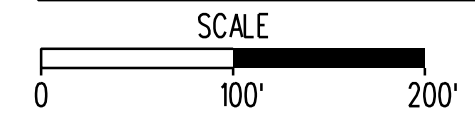
Scale : 1" = 100'

Sheet : 3 of 3

LEGEND:

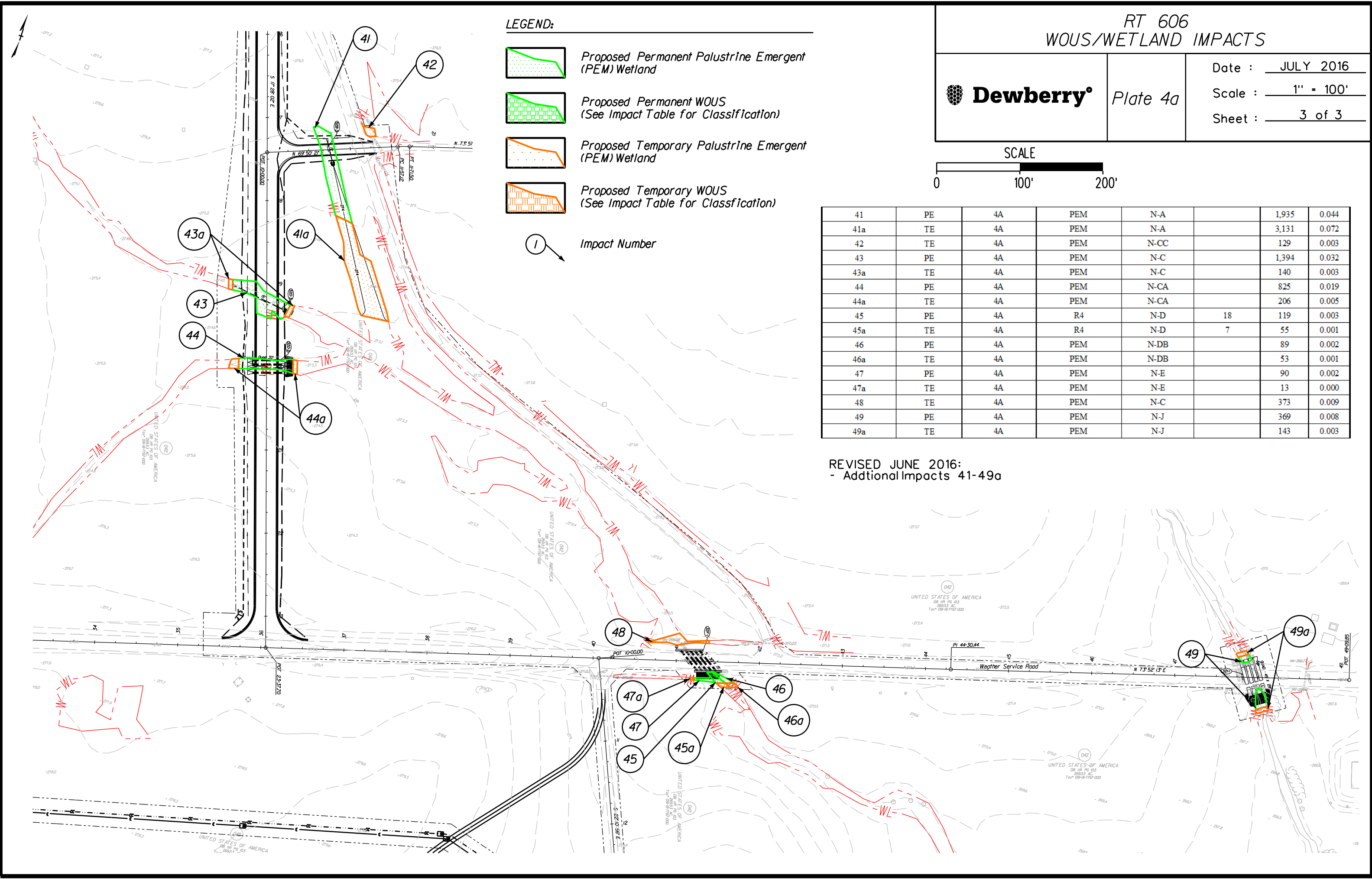
-  Proposed Permanent Palustrine Emergent (PEM) Wetland
-  Proposed Permanent WOUS (See Impact Table for Classification)
-  Proposed Temporary Palustrine Emergent (PEM) Wetland
-  Proposed Temporary WOUS (See Impact Table for Classification)

 Impact Number



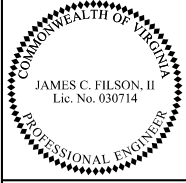
41	PE	4A	PEM	N-A		1,935	0.044
41a	TE	4A	PEM	N-A		3,131	0.072
42	TE	4A	PEM	N-CC		129	0.003
43	PE	4A	PEM	N-C		1,394	0.032
43a	TE	4A	PEM	N-C		140	0.003
44	PE	4A	PEM	N-CA		825	0.019
44a	TE	4A	PEM	N-CA		206	0.005
45	PE	4A	R4	N-D	18	119	0.003
45a	TE	4A	R4	N-D	7	55	0.001
46	PE	4A	PEM	N-DB		89	0.002
46a	TE	4A	PEM	N-DB		53	0.001
47	PE	4A	PEM	N-E		90	0.002
47a	TE	4A	PEM	N-E		13	0.000
48	TE	4A	PEM	N-C		373	0.009
49	PE	4A	PEM	N-J		369	0.008
49a	TE	4A	PEM	N-J		143	0.003

REVISED JUNE 2016:
- Additional Impacts 41-49a



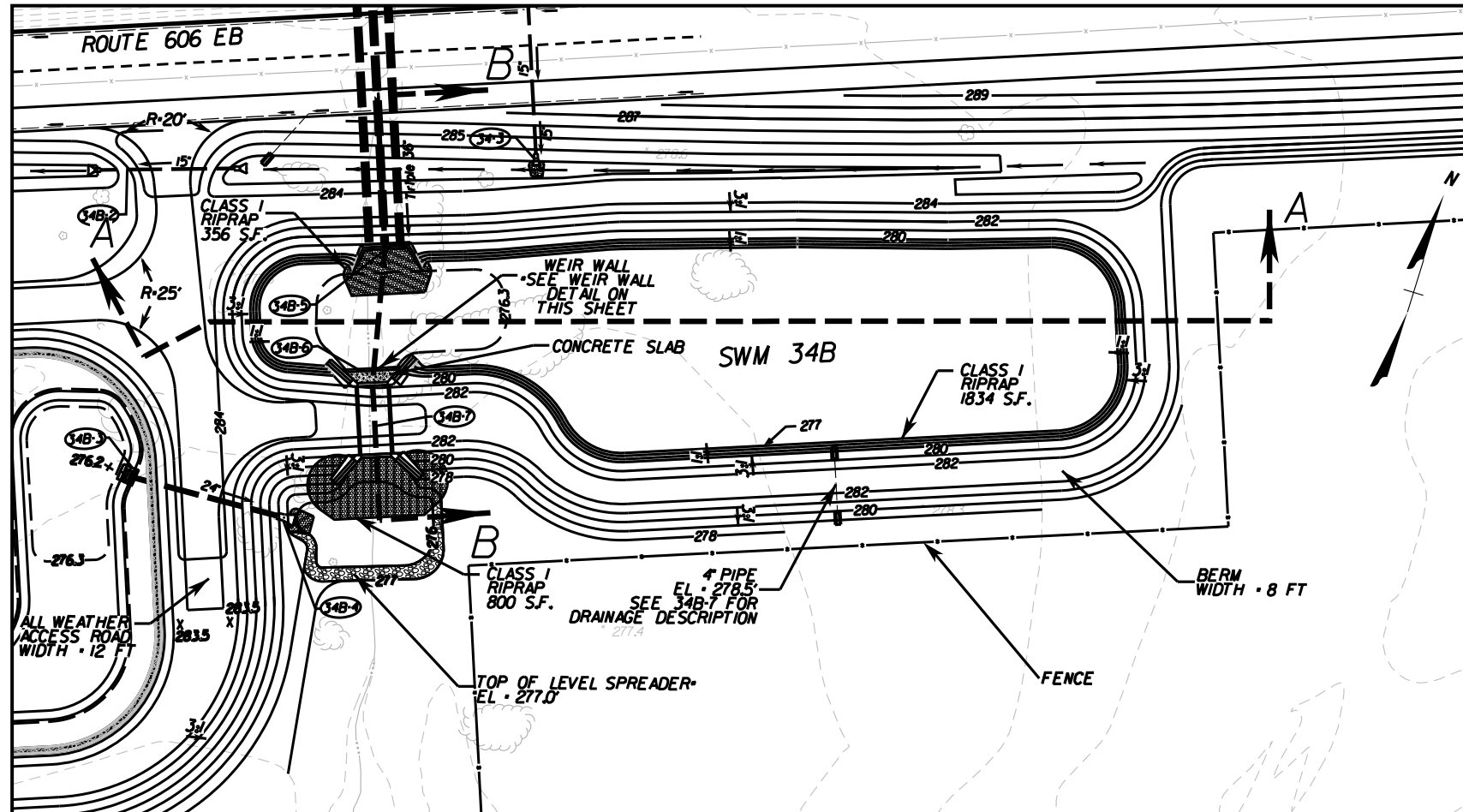
PROJECT MANAGER: *Mc, San, Jew, Sur, LE, PMP, CCM* - VDOT, NOVA District - (703) 259-2232
 SURVEYED BY, DATE: *Dewberry Consultants, LLC* - (703) 468-2252, July 2014 - Aug 2014
 DESIGN BY: *Dewberry Consultants, LLC* - (703) 289-4796
 SUBSURFACE UTILITY BY, DATE: *So Dena, Inc.* 2014

SWM 34B DETENTION ONLY BASIN

	STATE	ROUTE	PROJECT	SHEET NO.
	VA.	606	(INFO) 0606-053-983 RW-201.C-501	201371

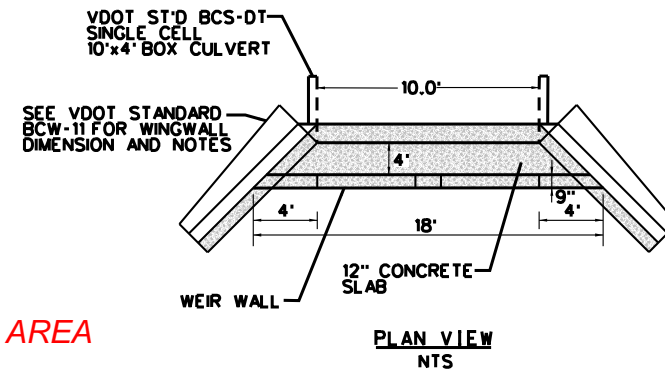
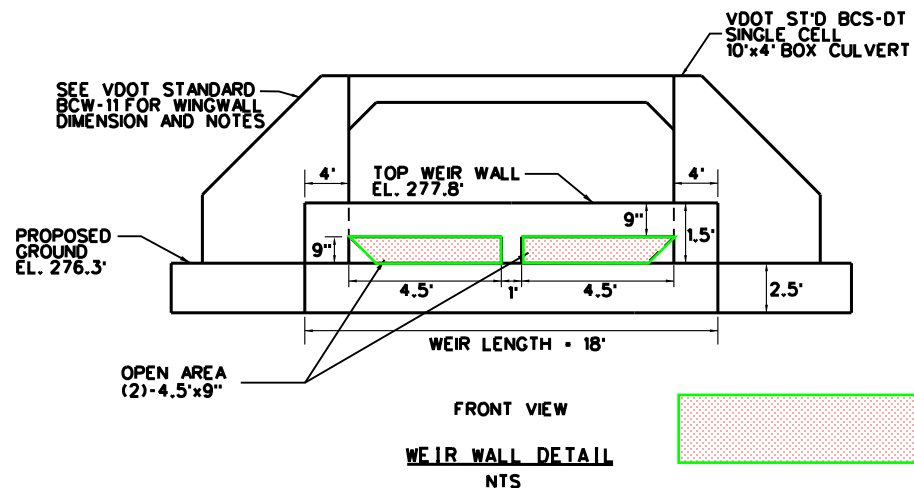
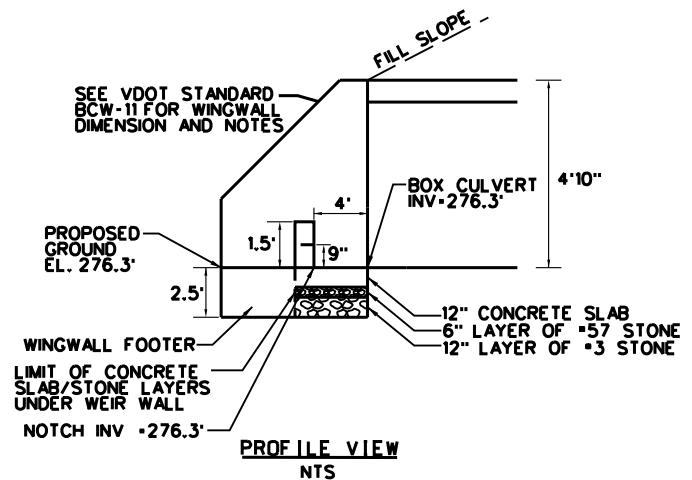
DESIGN FEATURES RELATING TO CONSTRUCTION OR TO REGULATION AND CONTROL OF TRAFFIC MAY BE SUBJECT TO CHANGE AS DEEMED NECESSARY BY THE DEPARTMENT

Dewberry Consultants LLC
 Fairfax, Virginia
 HYDRAULIC ENGINEER



NOTES:
 1. THE CONTRACTOR SHALL BE RESPONSIBLE FOR MAINTAINING THE PROPOSED BMP'S ONCE ALL CONNECTIONS HAVE BEEN COMPLETED, AND SHALL CERTIFY THAT THE BMP'S HAVE BEEN MAINTAINED PER MANUFACTURER'S MAINTENANCE GUIDELINES OR IN ACCORDANCE WITH THE TYPICAL INDUSTRY MAINTENANCE STANDARDS PRIOR TO TRANSFER TO VDOT.

*PER ARMY CORPS OF ENGINEERS REVIEW AND REQUEST, THE PROPOSED CHANNEL DOWNSTREAM OF SWM 34 AND SWM 34B HAS BEEN ELIMINATED AND A PROPOSED LEVEL SPREADER HAS BEEN INCORPORATED IN ORDER TO PROVIDE SHEET FLOW TO THE DOWNSTREAM WETLANDS.



OPEN AREA

#TIME#STAMPS