

Training

Off-Installation Maneuver and Field Training Exercise Coordination in Germany

***This regulation supersedes AE Regulation 350-22, 20 October 2009.**

For the Commander:

JAMES C. BOOZER, SR.
Major General, GS
Chief of Staff

Official:



DWAYNE J. VIERGUTZ
Chief, Army in Europe
Document Management

Summary. This regulation establishes policy and procedures for commanders to request and use off-installation maneuver coordination areas in Germany.

Summary of Change. This regulation has been completely revised.

Applicability. This regulation applies to all U.S. Forces stationed or training in Germany.

Records Management. Records created as a result of processes prescribed by this regulation must be identified, maintained, and disposed of according to AR 25-400-2. Record titles and descriptions are available on the Army Records Information Management System website at <https://www.arims.army.mil>.

Supplementation. Organizations will not supplement this regulation without approval of the Security Cooperation Division, Office of the Deputy Chief of Staff, G3, HQ USAREUR.

Forms. This regulation prescribes AE Form 350-22A and AE Form 350-22E AE and higher level forms are available through the Army in Europe Library & Publishing System (AEPUBS) at <https://aepubs.army.mil/>.

Suggested Improvements. The proponent of this regulation is the Security Cooperation Division, Office of the Deputy Chief of Staff, G3, HQ USAREUR (DSN 537-3625/3156). Users may suggest improvements to this regulation by sending DA Form 2028 to the USAREUR G3 (AEOP-SCD), Unit 29351, APO AE 09014-9351.

CONTENTS

SECTION I GENERAL

1. Purpose
2. References
3. Explanation of Abbreviations and Terms
4. Rights and Obligations
5. Responsibilities
6. Maneuver Categories

SECTION II ORGANIZATION AND PREMANEUVER COORDINATION

7. Maneuver Rights Request Procedures

SECTION III PREMANEUVER RECONNAISSANCE

8. Reconnoitering the Maneuver Area
9. Reporting Premaneuver Damage

SECTION IV SPECIAL RESPONSIBILITIES AND PROCEDURES

10. Units From Outside Germany
11. Major Exercises
12. NATO Exercises and Exercises with Partners

SECTION V USE OF MANEUVER AREA: GENERAL POLICY AND RESTRICTIONS

13. Entering the Maneuver Area
14. Use of Roadways and Vehicle Movement
15. Maneuver-Restricted Areas

SECTION VI SPECIAL REQUIREMENTS

16. Official Military Activities in the New German States
17. Bridging and River-Crossing
18. Drop Zones
19. Smoke, Pyrotechnics, and Blank Ammunition
20. Small-Arms and High-Explosive Ammunition Firing
21. Radio-Frequency Assignments
22. Payment for German Services
23. Noise-Sensitive Areas and Times

- 24. Refuse Disposal
- 25. Night Maneuvers
- 26. Use of Air Force Survey Drop Zones
- 27. Flying Routes and Helicopter Flight Coordination Areas

**SECTION VII
TEMPORARY MILITARY SECURITY AREAS**

- 28. Policy

**SECTION VIII
POLICING OF MANEUVER AREAS**

- 29. Policy
- 30. Petroleum, Oils, and Lubricants

**SECTION IX
PREVENTION OF ENVIRONMENTAL AND MANEUVER DAMAGE**

- 31. Policy
- 32. Prevention Training

**SECTION X
PROCEDURES**

- 33. Environmental Compliance Officers
- 34. Damage Reporting

Appendixes

- A. Maneuver Management Structure and Process
- B. Protected Areas and Their Warning Signs

Tables

- 1. MAO POCs
- 2. USFLO Contact Information
- 3. Maneuver Categories and Submission Requirements

Figure

- A-1. Maneuver Management Structure and Process

Glossary

**SECTION I
GENERAL**

1. PURPOSE

a. This regulation implements the NATO Status of Forces Agreement (SOFA) as it concerns the rights and obligations of the U.S. Forces when training on German land outside—

- (1) U.S. facilities.
- (2) Major training areas (MTAs) (AE Reg 350-1).
- (3) Local training areas (LTAs) (AE Reg 350-1).

b. This regulation establishes policy and procedures for commanders who plan and conduct off-installation maneuvers and field-training exercises (FTXs) on non-U.S.-controlled land in Germany. This regulation explains how to—

- (1) Prepare and submit maneuver rights requests (MRRs) on AE Form 350-22E.
- (2) Coordinate land requirements with the appropriate maneuver affairs officer (MAO).
- (3) Observe general and special restrictions during exercises.
- (4) Limit and report environmental and maneuver damage.

2. REFERENCES

a. Publications.

- (1) Treaty on the Final Settlement With Respect to Germany (<http://usa.usembassy.de/etexts/2plusfour8994e.htm>).
- (2) AR 25-400-2, The Army Records Information Management System (ARIMS).
- (3) AE Regulation 55-1, United States Military Motor Vehicle Operations on Public Roads.
- (4) AE Regulation 200-1, Army in Europe Environmental Quality Program.
- (5) AE Regulation 200-2, Environmental Guidance for Military Exercises.
- (6) AE Regulation 350-1, Training in the Army in Europe.
- (7) AE Regulation 350-2, Integrating the Armed Forces of Other Nations Into U.S. Army Unit-Level Training Events in Europe.
- (8) AE Pamphlet 25-1, Information Technology Support, and Services.
- (9) Maneuver Notifications to the Bavarian State Chancellery, BII7-90A-44-5-44, December 2008.
- (10) GE Federal Ministry of Defense (FMOD) SE 1 4, Guide for the Cooperation Between Sending States Forces and Federal Ministry of Defence [sic] (https://home.army.mil/sites/eur/g1/DMB/AEP%201010/Guide_SSF_27Jun13.pdf).

b. Forms.

(1) DA Form 2028, Recommended Changes to Publications and Blank Forms.

(2) AE Form 350-22A, Maneuver Environmental Damage Incident Report.

(3) AE Form 350-22E, U.S. Forces Request for Maneuver.

3. EXPLANATION OF ABBREVIATIONS AND TERMS

The glossary defines abbreviations and terms.

4. RIGHTS AND OBLIGATIONS

a. The Supplementary Agreement to the NATO SOFA, Article 45, gives U.S. Forces the right to conduct maneuvers and exercises on non-U.S.-controlled land in Germany. In executing this right, the U.S. Forces must comply with the procedures and the coordination requirements in this regulation.

b. This regulation establishes the administrative procedures for MAOs in Germany (app A).

c. Maneuver rights (MRs)—

(1) Are used when space and terrain required for a training mission are not available at MTAs or LTAs.

(2) Are temporary and for a specific exercise, area, and time.

(3) May not be used to reserve areas on a semipermanent basis or to “hold” an area for a possible training requirement.

(4) May be used in conjunction with training on MTAs and LTAs.

5. RESPONSIBILITIES

a. The Chief, Security Cooperation Division (SCD), Office of the Deputy Chief of Staff, G3, HQ USAREUR, is responsible for—

(1) Establishing policy to obtain rights to conduct maneuvers and exercises.

(2) Liaising with German military and civilian authorities.

(3) Approving all U.S. requests for off-installation maneuver training.

(4) Providing information copies of MR actions to the Chief, United States Army Claims Service, Europe (USACSEUR), and appropriate United States Forces liaison officers (USFLOs) (table 1).

(5) Notifying the Bavarian State Chancellery of exercises involving 2,000 or more soldiers.

b. USFLOs. USFLOs will review approved off-post maneuvers in their area of operation (AO) and make a recommendation to the Chief, SCD, based on the size, location, and current political environment if a courtesy notification to German State officials would be appropriate to lessen any potentially adverse effects.

Table 1 USFLO Contact Information		
Area	Names and E-Mail Addresses*	Telephone
Baden-Württemberg	<ul style="list-style-type: none"> • Schulze, Theodore S. theodore.s.schulze.civ@mail.mil • Berger, Matthias matthias.berger.ln@mail.mil • Leatherman, Cristobal L. cristobal.l.leatherman.civ@mail.mil 	DSN 420-7329/6429 civ (49) 0711-247829
Bayern	<ul style="list-style-type: none"> • Gutierrez, Julio A. julio.a.gutierrez.civ@mail.mil • D'Amore, Robert F. robert.f.damore.civ@mail.mil • Koeglmayr-Schwaighofer, Doris A. doris.a.koeglmayr-schwaighofer.ln@mail.mil • Daschner, Alexander alexander.daschner.ln@mail.mil 	civ (49) 089-284901
Hessen	<ul style="list-style-type: none"> • Clements, William E. william.e.clements.civ@mail.mil • Cannon, Edwin L. edwin.l.cannon.civ@mail.mil • Adams, Anne anne.adams3.ln@mail.mil • Doell, Uwe uwe.doell.ln@mail.mil 	civ (49) 0611-1746-3912
Rheinland-Pfalz & Saarland	<ul style="list-style-type: none"> • Steininger, Steven R. steven.r.steinger.civ@mail.mil • Hackfort, Birte birte.hackfort2.ln@mail.mil • Dixon, Sascha sascha.dixon.civ@mail.mil • Wilke, Hanns-Jost hanns-jost.wilke.ln@mail.mil 	civ (49) 06131-204940/1/2
*NOTE: The USFLO is the first name in each list.		

c. MAOs.

(1) Table 2 lists the MAOs.

Table 2 MAO Contact Information		
MAO by Name and Telephone Number	Office Location	Supported Areas
Mr. Dietmar Heidrich DSN 485-6540	Baumholder	Rheinland-Pfalz, Saarland, and southern Hessen
Mr. Ernest Roth and Mr. Reinhold Plössner DSN 475-7880/7154	Grafenwöhr	Baden-Württemberg and Bavaria
Mr. Josef Ebert and Hans Kotzbauer DSN 520-5188/5737	Hohenfels	

(2) MAOs for the areas where maneuver units reside or where maneuvers will occur are responsible for the following:

(a) Assisting units in planning off-installation maneuver training within their AO.

(b) Negotiating with German authorities and serving as the POC to district-, county-, and town-level governments on procedures, area exemptions, and special restrictions and limitations. Negotiations at the State level will be conducted in coordination with the USFLO of the pertinent German State.

(c) Conducting premaneuver coordination of off-installation maneuver and training activity and other exercises not fewer than 10 calendar days before the training starts.

(d) Providing requesting units with MR information.

(e) Investigating complaints about U.S. Forces maneuver and exercise activities.

(f) Preparing responses to complaints from the German authorities about U.S. Forces maneuver and exercise activities and sending them to the USAREUR G3 (AEOP-SCD), Unit 29351, APO AE 09014-9351. All responses must be coordinated with the appropriate USFLO where the exercise occurred.

(g) Initiating corrective action when specifically authorized by the USAREUR G3 and the Environmental Engineer, USACSEUR.

(h) Coordinating with other allied forces to prevent conflicts over maneuver areas and times.

(i) Conducting maneuver damage-prevention training, as required.

(j) Arranging for and assisting with pre-, during-, and post-maneuver coordination in their geographic areas.

(k) Submitting MRRs (AE Form 350-22E) from units to the USAREUR G3 (AEOP- SCD) according to specified timelines laid out in this regulation.

(l) Sending a copy of AE Form 350-22A through the USAREUR G3 (AEOP-SCD), Unit 29351, APO AE 09014-9351, to the Chief, USACSEUR (AEJA-CD-C), Unit 30010, APO AE 09086-0010.

(m) Serving as the technical expert for MRs and the prevention of environmental damage caused by maneuvers.

(n) Serving as the POC for and closely coordinating with the SCD and German officials on exercises in their assigned areas.

d. Commanders. Commanders of exercising units will—

(1) Request MRs on AE Form 350-22E. Requests must be sent through the MAO to USAREUR G3 (AEOP-SCD), Unit 29351, APO AE 09014-9351, or by fax to DSN 370-3443. The units must observe Federal Ministry of Defense (FMOD) categories and submission times when sending MRs (table 3).

Table 3 Maneuver Categories and Submission Requirements		
Maneuver- Category Number	Size of Maneuver Unit	Time for Submission of MRR
1	<ul style="list-style-type: none"> • Not to exceed company strength for an FTX. • Full-strength exercises. • Up to 250 Soldiers for a command post exercise (CPX). 	5 weeks before the start of the exercise (STARTEX)
2	<ul style="list-style-type: none"> • Not to exceed battalion level for an FTX. • Between 250 and 600 Soldiers for a CPX. 	7 weeks before STARTEX
3	<ul style="list-style-type: none"> • Exceeding battalion strength, but not brigade strength for an FTX. • Between 600 and 1,500 Soldiers for a CPX. 	9 weeks before STARTEX
4	<ul style="list-style-type: none"> • Exercises and training (FTX) exceeding brigade size and a CPX involving more than 1,500 Soldiers. 	17 weeks before STARTEX
5	<ul style="list-style-type: none"> • Requests for training in a new German State (glossary) 	All of the above apply.

(2) Assign an officer to conduct premaneuver coordination with an assigned MAO.

(3) Designate an officer on official orders as the unit off-installation environmental compliance officer (ECO).

(4) Send all copies of AE Form 350-22A within 14 calendar days after the end of off-installation maneuver or other training event to the USAREUR G3 (AEOP-SCD), Unit 29351, APO AE 09014-9351, or fax DSN 370-3443.

6. MANEUVER CATEGORIES

Premaneuver coordination, submission times, and processing guidelines for MRRs (AE Form 350-22E) have been established for each maneuver category. The categories and submission times for MRRs are shown in table 3.

SECTION II ORGANIZATION AND PREMANEUVER COORDINATION

7. MANEUVER RIGHTS REQUEST PROCEDURES

a. Units must send AE Form 350-22E through the MAO to USAREUR G3 (AEOP-SCD) according to the timelines in table 3.

b. The Maneuver Management Officer, SCD, will assign the unit an MR number and authorization for the exercise and send the approval to the servicing MAO. The MAO will then notify requesting units when the MR is approved and explain coordination requirements.

SECTION III PREMANEUVER RECONNAISSANCE

8. RECONNOITERING THE MANEUVER AREA

a. Unit commanders are responsible for planning and coordinating maneuvers.

b. MAOs will—

(1) Identify the appropriate German officials with whom to coordinate and assist with premaneuver coordination.

(2) Help maneuver units avoid or reduce conflicts with the host nation and ensure restrictions are enforced.

9. REPORTING PREMANEUVER DAMAGE

During the premaneuver reconnaissance of an approved maneuver area for any battalion-size maneuver, reconnaissance teams will contact the USACSEUR Environmental Engineer, if available. If the Environmental Engineer is not available, the senior unit ECO will record any existing major damage to roads, land, and forests that could have been caused by previous military training activities. Premaneuver damages must be recorded on AE Form 350-22A and should include video or photographic evidence of existing environmental damage or issues.

SECTION IV SPECIAL RESPONSIBILITIES AND PROCEDURES

10. UNITS FROM OUTSIDE GERMANY

Units stationed outside Germany must send MRRs through their command channels to the USAREUR G3 (AEOP-SCD), Unit 29351, APO AE 09014-9351, 1 year before STARTEX unless the training has already been requested through a German-based training unit.

11. MAJOR EXERCISES

For maneuvers directed by USAREUR or a higher command, commanders will send the MRR to USAREUR G3 (AEOP-SCD), Unit 29351, APO AE 09014-9351.

12. NATO EXERCISES AND EXERCISES WITH PARTNERS

a. Commanders directing a NATO or partner State exercise will send a consolidated MRR for participating units under their command and, if applicable, for other participating units.

b. When a USAREUR maneuver or exercise includes both U.S. Forces and allied or partner State forces, the maneuver director will report the number of participating allied troops, their nationalities, equipment (for example, armored vehicles, artillery weapons systems, fixed and rotary-wing aircraft, main battle tanks, tracks more or less than military load class (MLC) 24, and wheels more or less than MLC 24) and their exact designations in the MRR.

c. If a USAREUR unit participates in a joint or combined exercise, the USAREUR unit will request a separate MRR or have a written agreement that the other exercise participants will provide MR coverage.

d. When another participant is responsible for the MR, the USAREUR unit remains responsible for completing AE Form 350-22A on its exercise activities.

e. Notification requirements for foreign forces training on U.S. installations must also be met in accordance with AE Regulation 350-2. Submission of requirements must be coordinated directly with the USAREUR Liaison Office, Berlin (e-mail: usarmy.badenwur.usareur.mbx.usareur-lno-berlin-group@mail.mil or fax: 030-8305-2504).

SECTION V

USE OF MANEUVER AREA: GENERAL POLICY AND RESTRICTIONS

13. ENTERING THE MANEUVER AREA

a. Before moving into an approved maneuver area, the MAO and commanders will brief participating Soldiers on maneuver damage prevention and control, including air-, water-, and soil-pollution hazards and noise-reduction measures.

b. Maneuver units will not enter cultivated fields (glossary).

c. Prior approval must be obtained before moving over harvested fields and mowed pasture land (glossary). The unit commander will examine soil conditions to ensure vehicles and equipment will not cause excessive damage. Vehicles and equipment may never be used in vineyards or on vineyard roads and paths.

d. Heavy and tracked vehicles must avoid using hard-surface agricultural roads (glossary) whenever possible to prevent disrupting farming operations and costly damage claims.

e. The MAO will coordinate with the local forestry office (*Forstamt*) if operational requirements require a change to the agreed coordination.

f. Before entering depressed terrain-drainage areas, the maneuver unit must reconnoiter the area to determine if the area will support wheeled and tracked vehicles and equipment.

g. Climbing trees or telephone poles to place communication wires is prohibited.

h. Constructing in-ground fighting positions, digging field latrines; and erecting temporary communication complexes require specific permission of the land owner, the forestry official, and the MAO. Whenever possible, portable latrines should be used. Post holes must be filled, leveled, and restored to original condition before leaving the area. Digging holes or other placements that could damage growing crops or orchards is prohibited.

i. Approved MRRs do not constitute permission for constructing permanent facilities and accommodations. Special maneuver construction requirements must be included in the MRR.

j. MRRs will not include built-up areas and do not permit occupation and use of buildings and structures not under U.S. Forces control.

k. The killing of wild game within the maneuver coordination area is strictly prohibited. Animals killed by accident must be reported immediately to the MAO.

14. USE OF ROADWAYS AND VEHICLE MOVEMENT

a. The MR does not include movement credits required in accordance with AE Regulation 55-1 to and from MR areas. Movement credits must be requested separately from the appropriate branch movement control team listed in AE Regulation 55-1, appendix B.

b. Road signs, traffic restrictions, and established weight limits for roads and bridges must be observed.

c. MAOs will assist in the coordination of heavy-vehicle movement within the maneuver area, including coordination with the German police and community officials.

15. MANEUVER-RESTRICTED AREAS

a. Maneuvering units should avoid watershed areas (*Wasserschutzgebiete*) whenever possible. If required to use watershed areas, units must use them in accordance with local laws and regulations and only after the use has been approved by local authorities. Maneuver units may normally enter watershed areas only when the unit remains on hard-surfaced roads. In accordance with State, district, or local laws and regulations, permission may be granted for limited training activities (normally dismounted patrolling only) within a watershed area. All movement through or training in a watershed area must be closely coordinated with county environmental protection (*Umweltschutz*) personnel before STARTEX. MAOs and unit ECOs will closely monitor all activity in and around designated *Wasserschutzgebiete*. These areas normally are divided into zones: zone I (a small, often fenced-in well or water source), zone II (a relatively small safety area around zone I), and zone III (a large area around zone II, sometimes subdivided). If necessary, limited training operations may be conducted in zone III after coordination with the local German authorities (*Wasserwirtschaftsamt*). If permission is given to use a zone-III area—

- (1) No garbage, latrine, or waste pits will be established.
- (2) No petroleum, oils, and lubricants (POL) will be used.
- (3) No refueling operations will be performed in the area.
- (4) Bivouacking and shower and laundry operations must be conducted outside watershed areas.
- (5) Vehicles will be washed only at authorized wash racks.

b. Maneuvers and exercises are prohibited in nature preserve areas (*Naturschutzgebiete*) and at nature monument sites (*Naturdenkmale*). Public roads through nature preserve areas, however, may be used if premaneuver coordination has been conducted with county environmental protection personnel.

c. Extra damage-prevention efforts must be made when maneuvering in protected landscape areas (*Landschaftsschutzgebiete*) and nature parks (*Naturparks*).

NOTE: German-language warning signs posted around restricted areas (a thru c above) are described in appendix B.

d. In local recreational areas (*Naherholungsgebiete*), special care must be taken to prevent damage to hiking paths and recreational facilities and equipment.

e. MAOs will keep current maps showing restricted areas.

SECTION VI SPECIAL REQUIREMENTS

16. OFFICIAL MILITARY ACTIVITIES IN THE NEW GERMAN STATES

The Treaty on the Final Settlement With Respect to Germany (Two Plus Four Agreement) establishes policy and procedures for official military activities (OMA) in the new German States (glossary).

a. Personal activities are unrestricted. Visits to embassies, consulates, and German authorities in Berlin are permitted.

b. DOD personnel on official business in the new German States must send an official visit request to the FMOD.

c. Maneuvers and exercises on privately owned or public lands in the new German States are possible. Prior coordination, however, with FMOD is required before a maneuver notification can be sent to the appropriate German civilian and military authorities as determined by the SCD. The FMOD coordination is required in addition to observing the times prescribed in table 3. A map outlining the proposed maneuver area must be included when coordinating the request.

d. When U.S. Forces personnel officially participate in events in the new German States, the following information is required for each individual who will be participating:

- (1) Last and first name.
- (2) Grade.
- (3) Date of birth.
- (4) Passport or ID card number.
- (5) Sending agency or office.
- (6) Place to be visited, including a POC if possible.
- (7) Date and duration of the visit.

- (8) Purpose of the visit.
- (9) Lodging and transportation requirements.
- (10) Special requirements and remarks.

NOTE: For large groups, a consolidated list is acceptable.

e. Requests for OMA will be sent through the MAO and USAREUR G3 (AEOP-SCD), Unit 29351, APO AE 09014-9351 (fax DSN 370-3443), for coordination with the FMOD.

f. U.S. Forces may train with *Bundeswehr* units if invited by the FMOD.

g. Requests to use MTAs in the new German States must be sent through the MAO to the USAREUR G3 (AEOP-SCD), Unit 29351, APO AE 09014-9351 (fax DSN 370-3443), for coordination with the U.S. Embassy in Berlin.

17. BRIDGING AND RIVER-CROSSING

Units will—

a. Use AE Form 350-22E to request bridging and other training activities on navigable German waterways. Each of these training events requires a separate AE Form 350-22E. The USAREUR G3 (AEOP-SCD) will issue an MR directly to the unit after announcing a bridging exercise.

b. Must request bridging exercises at least 4 weeks before STARTEX.

18. DROP ZONES

Requests for intermittent use of a specific drop zone will be sent through the MAO to USAREUR G3 (AEOP-SCD), which will negotiate the request with the applicable German State Government in coordination with the USFLO. Requests for a one-time use of a drop zone will be sent and processed on AE Form 350-22E.

19. SMOKE, PYROTECHNICS, AND BLANK AMMUNITION

a. The use of smoke, pyrotechnics, or blank ammunition requires special authorization. This information must be included on AE Form 350-22E. (Requests for these requirements are often denied.)

b. Irritant agents (tear gas) and nuclear-blast simulators will not be used in MR areas.

c. Used and unused pyrotechnics must be removed from the maneuver area before the unit departs the area.

d. Improvised explosive device simulators may be requested for use.

20. SMALL-ARMS AND HIGH-EXPLOSIVE AMMUNITION FIRING

MR coverage may permit firing blank ammunition, up to and including .50 caliber if the requirement was requested on AE Form 350-22E and was coordinated with local German authorities before the maneuver. Additionally, air-defense artillery signature, anti-tank guided missile, anti-tank weapon effects signature, Hoffman, Main Gun Engagement Simulation System, and “Smoky Sam” main-gun simulators may be used if requested and coordinated. Other ammunition may be fired only at U.S.-controlled MTAs, LTAs, or range facilities under current directives and range regulations. In order to avoid unnecessary problems when using blank ammunition while exercising off post, the unit MAO must coordinate with local and regional police stations.

21. RADIO-FREQUENCY ASSIGNMENTS

Units using radios, radar, or other electromagnetic emitters require frequency assignments specifying operation in the maneuver area for the duration of the exercise. Commanders will ensure frequency requests comply with provisions in AE Pamphlet 25-1. Units will coordinate with the local frequency manager who has oversight of the area in which training will be conducted. That frequency manager will have final approval authority for all frequency or hopset requests (glossary) for an exercise.

22. PAYMENT FOR GERMAN SERVICES

Maneuvering units must pay for services requested from German sources in support of a maneuver or exercise (for example, German telephone service, water from sources not in the operation order, rental fees for buildings and other accommodations). Units should contact the Office of the Judge Advocate, HQ USAREUR, before using services from German sources. Maneuver contract officers must have contracting authority to negotiate for German-source services. Commanders must be aware of the difference between a bill submitted for a contracted service and a claim submitted for damage. Any claim for property damage by either the German Government or a third party must be reported through the MAO to USACSEUR for adjudication through Article VIII of the NATO SOFA. Commanders should consult with the MAO and USACSEUR on any claims for damage.

23. NOISE-SENSITIVE AREAS AND TIMES

a. Maneuver and exercise activities will be minimal on Sundays and German religious and legal holidays. Vehicles with a maximum permissible weight of more than 7.5 tons with a trailer attached, as well as military convoys comprising three or more vehicles will require approval of the *Bundeswehr* Logistics Center for road movements between 0000 hours and 2200 hours on Sundays and German holidays. Additionally, during the holidays and times specified below, movement of military vehicles may be restricted in high traffic areas around major cities or regions with high amounts of holiday traffic.

(1) 1 July through 31 August from 1200 on Friday to 2200 on Sunday.

(2) During Easter and Whitsun.

b. When operational readiness requires training on a Sunday or German holiday, units will use noise-reduction techniques for aircraft, equipment, and vehicle operations.

c. Units will avoid using blank ammunition, smoke, pyrotechnics, and simulators near areas that may disturb the local population, especially in areas where religious services are conducted.

d. Noise reduction is essential near hospital facilities (*Krankenhaus* or *Klinik*), spa towns (*Kurort*), spa areas (*Kurgebiet*), and during quiet hours (generally from 2200 to 0600 on Monday through Friday, on weekends, and on German holidays).

e. If weekends are included in the exercise period, a justification with information on the extent of training activities planned for the weekend must be included on the MRR.

24. REFUSE DISPOSAL

To protect the environment according to German law, units will observe the following rules in handling refuse produced during a maneuver or exercise:

a. Refuse will contain no ordnance.

b. Refuse will never be buried.

c. Refuse must be collected and transported to trash dumps located in the nearest U.S. military community or to the home station of the unit. There is no cost to the unit when refuse is disposed of on post or according to instructions in the operating orders for major exercises. Refuse may not be placed in local German trash dumps.

d. Hazardous waste (for example, chemical, medical, POL, toxic) will be returned to the U.S. military home community of the unit for proper disposal. Hazardous waste will not be mixed with normal refuse. AE Regulation 200-1 and AE Regulation 200-2 provide guidance on hazardous waste disposal procedures.

e. Gray water produced by food preparation will never be dumped or buried. All gray water will be collected and removed as part of the contract for removing black and gray water from portable toilets and showers and will be disposed of in accordance with the local host-nation law.

f. All black and gray water produced from toilets and field showers will be removed and disposed of in accordance with local host-nation law.

25. NIGHT MANEUVERS

a. Units should coordinate with German police for roadblocks, escorts, or both that may be required for any operation conducted by vehicles at night on any type of public road. Night maneuvers on public roads require both standard lights and a rotating amber warning light (RAWL), which serves as a hazard warning light, on each oversized vehicle. Other vehicles must operate with standard lights.

b. In addition to the requirement for all oversized vehicles to have a RAWL, the lead and trail vehicle of each convoy must have a functioning RAWL.

c. If the RAWL on an oversized vehicle is damaged during the exercise, the unit safety officer in coordination with the MAO may grant an exception to allow the vehicle to operate at night, but only after careful consideration of the risk. If the safety officer grants an exception, risk-mitigation measures will be implemented. Black-out driving is never authorized while driving on public roads.

26. USE OF AIR FORCE SURVEY DROP ZONES

a. United States Air Force (USAF) personnel may survey any approved drop zone and use it for C-130 airdrop operations.

b. To compensate for weather-related delays, units may request use of both surveyed and non-surveyed drop zones for a 5-day period (Mon thru Fri), but may use the zones only for 1 day during the requested 5-day period.

c. Approved maneuver requests for airborne operations constitute only ground approval. Approved requests for airborne operations do not include or imply coordination for the notice to airmen or any other requirements for use of air corridors. All aircraft- and aviation-specific coordination must be conducted by USAF personnel in accordance with German Federal aviation regulations.

27. FLYING ROUTES AND HELICOPTER FLIGHT COORDINATION AREAS

Aviation units will request nap-of-the-earth flying routes and helicopter flight coordination areas (HFCAs) each month. Landing sites will be identified by Universal Transverse Mercator (UTM) grid coordinates and may not exceed operational requirements. To prevent overuse, HFCA landing sites will be rotated each month. HFCAs may be requested each quarter or twice a year. Any modifications to advance approvals must be made in accordance with table 3.

SECTION VII TEMPORARY MILITARY SECURITY AREAS

28. POLICY

a. Under German law, maneuver units may establish a temporary military security area (MSA) and block property not under their control to provide security for an exercise control center or sensitive weapons and equipment. This area needs to be coordinated during premaneuver coordination with the MAO and German officials. MSAs will be clearly marked with the following German text: *“Militärischer Bereich. Unbefugtes Betreten verboten. Zuwiderhandlungen werden verfolgt.”* MSAs must not include emergency access roads, firebreaks, or other areas where closure of restricted access will hinder public safety.

b. MSA guards will be briefed on their authority and duties. The briefing will emphasize weapons-handling. Guards will have field telephones or wireless communication equipment to maintain contact with the control center. When possible, guards should have some knowledge of the German language.

c. Serious incidents in connection with establishing and operating MSAs must be reported immediately to the MAO and the USFLO (table 1) in whose area the serious incident occurred.

SECTION VIII POLICING OF MANEUVER AREAS

29. POLICY

Before leaving an MR area, the maneuver unit must clean the area. Commanders will ensure that areas in which fieldworks are constructed are returned to their original condition and dangerous items (for example, ammunition, barbed wire, communication cables and wire, explosives, pyrotechnics) are removed from the area.

30. PETROLEUM, OILS, AND LUBRICANTS

a. Units must prevent leaks and spills while transporting, handling, and storing POL products. As a precaution, units will bring absorbent materials and containers for cleaning if leaks or spills occur.

b. Proposed refueling points must be coordinated with local German authorities before maneuvers. Units must include these locations in their MRR. POL operations, including use of 5-gallon cans, must be reported on the MRR. POL sites and equipment must be inspected for potential leaks.

c. Units must use sufficient secondary containment to prevent environmental contamination. Waste POL products must be disposed of properly.

d. Units will immediately report POL spills to the nearest German police station and to the MAO. The unit also must report spills (including drips) of POL on the master maneuver damage report and send a copy of all spill reports to USACSEUR (AEJA-CD-C), Unit 30010, APO AE 09086-0010.

e. Cleanup of the contaminated area must be coordinated with local German authorities. AE Regulation 200-1 and AE Regulation 200-2 provide more guidance.

SECTION IX PREVENTION OF ENVIRONMENTAL AND MANEUVER DAMAGE

31. POLICY

Commanders will review training programs (AE Reg 350-1) to ensure training emphasizes the prevention of maneuver damage. Command support of damage-prevention and -control programs will help ensure maneuvers and exercises have a minimum effect on the environment.

32. PREVENTION TRAINING

The MAO will coordinate and conduct training on environmental- and maneuver-damage prevention for maneuver units. Units may request training through their MAO. USACSEUR will provide prevention training to maneuver units when requested to do so by the unit or MAO.

SECTION X PROCEDURES

33. ENVIRONMENTAL COMPLIANCE OFFICERS

a. The commander of the maneuvering units will appoint an ECO for each maneuver or exercise. The ECO will investigate, record, and report incidents of maneuver damage. Environmental and maneuver-damage incidents must be recorded on AE Form 350-22A. The ECO will send the completed form through the MAO, who will review it for accuracy and forward it as part of the post-maneuver report to the USAREUR G3 (AEOP-SCD), Unit 29351, APO AE 09014-9351, and to the USACSEUR (AEJA-CD-C), Unit 30010, APO AE 09086-0010.

b. Damage claims against the U.S. Government must be kept to a minimum. The claims procedure in the NATO SOFA, Article VIII, should be used for all damage. In the event of POL spills, units should take immediate remedial measures and report the incident to the MAO.

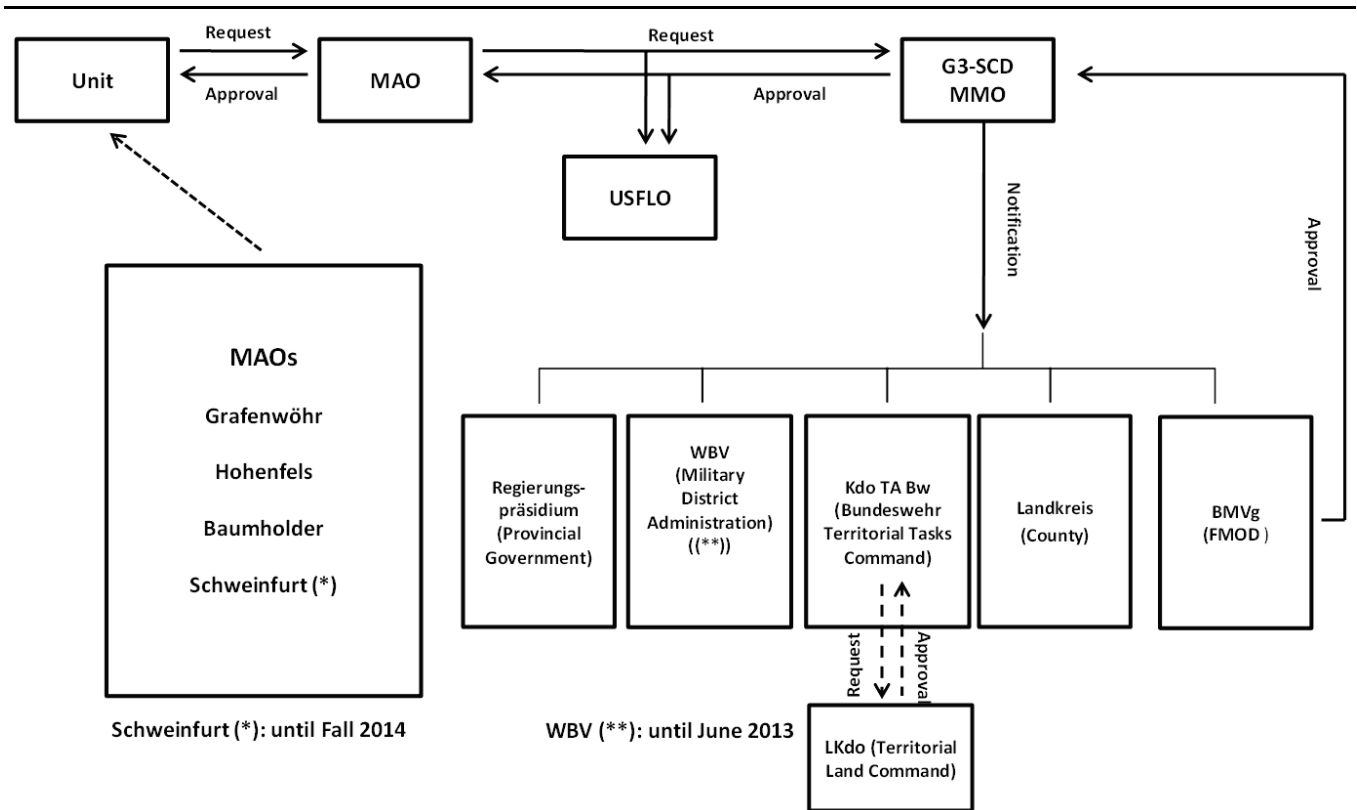
c. The ECO will inspect the maneuver area after the unit has left to ensure the area has been policed and dangerous items (for example, ammunition, barbed wire, communication cables, explosives, pyrotechnics, wires) have been removed.

34. DAMAGE REPORTING

The maneuver unit will maintain a record of all maneuver damage that occurs during the exercise, record the damage on AE Form 350-22A, and provide any required copies of AE Form 350-22A to the MAO immediately after the exercise.

**APPENDIX A
MANEUVER MANAGEMENT STRUCTURE AND PROCESS**

Figure A-1 illustrates the maneuver management structure and process.



NOTE: The glossary defines abbreviations used in the figure.

Figure A-1. Maneuver Management Structure and Process

APPENDIX B PROTECTED AREAS AND THEIR WARNING SIGNS

B-1. NATURE PRESERVE

A nature preserve (*Naturschutzgebiet*) normally is a small area protected by German law and exempt from maneuvers and exercises.

SIGNS: Triangular sign with the point down, white background, green rim, black eagle, and black letters or a pentagonal sign with yellow background, black owl, and black letters.



B-2. NATURE MONUMENT

A nature monument (*Naturdenkmal*) is a natural formation (for example, moor, bird sanctuary, rock formation) that characterizes the landscape and may have a historical background. Like nature preserves, nature monuments are exempt from maneuvers and exercises.

SIGNS: Triangular sign with the point down, white background, green rim, black eagle, and black letters.



B-3. PROTECTED LANDSCAPE AREA

Protected landscape areas (*Landschaftsschutzgebiete*) are areas protected by German law. These areas may be entered and used during field training exercises provided extra care is taken to prevent unnecessary and possibly irreparable damage to the environment.

SIGNS: Triangular sign with the point down, white background, green rim, black eagle, and black letters.



B-4. NATURE PARK

Often several protected landscape areas are consolidated to form a nature park (*Naturpark*). During maneuver exercises, nature parks will be treated like protected landscape areas (para B-3).

SIGN: Triangular sign with the point down, white background, green rim, black eagle, and black letters.



B-5. WATER COLLECTION AREA

There are two typical signs for this type of area:

a. A water collection or watershed area (*Wasserschutzgebiet*) is protected by German law against contamination. These areas supply drinking water to cities and communities. Military activity in these areas is restricted.

SIGN: Rectangular sign with a blue background, white letters, and a square white center with blue wavy lines. Sometimes the sign will show the rear view of a petroleum, oils, and lubricants (POL) truck in black above the wavy lines.



b. Another water collection area normally is near wells or watersheds. POL trucks carrying more than 3,000 liters (approximately 800 gallons) of POL products are prohibited from using roads in these posted areas.

SIGN: Round sign with a white background, red rim, and the rear view of a POL truck in black above blue wavy lines.



B-6. HAZARDOUS-CARGO RESTRICTION AREA

A hazardous-cargo restriction area is a densely populated area where an accident or fire with vehicles carrying hazardous cargo could have a catastrophic effect on the local population. Vehicles carrying hazardous cargo are not authorized to use roads in this area (for example, POL tankers; vehicles carrying live ammunition, explosives, or pyrotechnics; Hawk missile carriers). Vehicle drivers should look for alternate routes to avoid these areas.

SIGN: Round sign with a white background, a red rim, and an orange cargo truck.



GLOSSARY

SECTION I ABBREVIATIONS

ADA	air defense artillery
ARTEP	Army Training and Evaluation Program
BCTP	Battle Command Training Program
CFX	command post exercise
CPX	command post exercise
ECO	environmental compliance officer
FARP	forward area rearm/refuel point
FMOD	Federal Ministry of Defense
FTX	field training exercise
HFCA	helicopter flight coordination area
HQ USAREUR	Headquarters, United States Army Europe
ICW	in coordination with
ID	identification
LTA	local training area
MAO	maneuver affairs officer
MHz	megahertz
MLC	military load class
MOD	Ministry of Defense
MOVEX	movement exercise
MR	maneuver right
MRR	maneuver rights request
MSA	military security area
MTA	major training area
NATO	North Atlantic Treaty Organization
NOTAM	notice to Airmen
OMA	official military activities
POC	point of contact
POL	petroleum, oils, and lubricants
RAWL	rotating amber warning light
RECON	reconnaissance
SIGEX	signal exercise
SOFA	Status of Forces Agreement
STARTEX	start of exercise
TACEVAL	tactical evaluation
TMO	transportation movement office
TSC	training support center
U.S.	United States
USACSEUR	United States Army Claims Service, Europe
USAF	United States Air Force
USAFE	United States Air Forces in Europe
USAREUR	United States Army Europe
USFLO	United States Forces liaison officer
UTM	Universal Transverse Mercator (grid)

SECTION II

TERMS

agricultural road

A hard surface (concrete or asphalt) or dirt road that provides farmers easy access to their fields, is approximately 10 feet wide, and can handle a maximum load of 6 tons.

cultivated field

Farmland with growing crops (for example, asparagus, beets, clover, corn, grain, potatoes).

harvested field

Farmland after the crops have been removed.

hopset

A list of frequencies the spectrum manager authorizes a particular unit to use. A list of discrete frequencies or ranges and groups of frequencies specify the hopset.

maneuver

A specific mounted or dismounted troop exercise including bivouacs, field-training or command post exercises, readiness and training tests, and communication and air-control exercises requiring the temporary use of German land not under U.S. Forces control maneuver coordination area, or public or private German-controlled land used temporarily by permission under approved maneuver rights to conduct a military maneuver or training.

maneuver damage

Damage to land, roads, and structures resulting from maneuvers and exercises. Maneuver damage also may include personal damages, loss of revenue, and consequential damage.

maneuver damage control

Actions to prevent unnecessary maneuver damage and to minimize damage that cannot be avoided. Maneuver damage control includes premaneuver reconnaissance and coordination, briefing troops on damage prevention and reporting, and meetings with German officials and property owners to coordinate exercise plans and proposed land use.

maneuver management

The management of land-use factors for unit training planners and for monitoring maneuver rights activities for USAREUR units in these areas.

maneuver notification

Notification of maneuver rights to German authorities submitted by USAREUR (AEOP-SCD).

maneuver request

A request for maneuver rights (AE Form 350-22E) submitted to USAREUR (AEOP-SCD).

maneuver rights

Temporary permission given by local German authorities to occupy and use public and private land to conduct a military training activity.

maneuver rights request

A request for permission to conduct a military exercise. This request is made on AE Form 350-22E.

new German States

Brandenburg, Mecklenburg-Vorpommern, Sachsen, Sachsen-Anhalt, and Thüringen.

pasture land

Grassland that farmers mow at least twice a year for livestock fodder. Pasture land normally is not plowed. When soil is wet, vehicles will cause deep ruts that could disrupt the mowing operation and may damage mowing machinery.

Section III**GERMAN LANGUAGE TERMS*****Bundeswehr***

The German Armed Forces.

Forstamt

A Federal, State, or private forestry office.

Klinik/Krankenhaus

A hospital or special medical clinic.

Kurgebiet

Recreational area of a spa town.

Kurort

Town with an official spa status.

Landschaftsschutzgebiet

Protected landscape area.

Naturdenkmal

A nature monument or site exempt from maneuvers and exercises.

Naturpark

Nature park or a consolidation of protected landscape areas.

Naturschutzgebiet

Nature preserve exempt from maneuvers and exercises.

Wasserschutzgebiet

Protected watershed area (zone III) in which only limited training can be conducted.

Wasserwirtschaftsamt

Water control agency operating at county level.