

Legend

— Project Corridor



1008 Old Virginia Beach Road, Suite 200
Virginia Beach, VA 23513

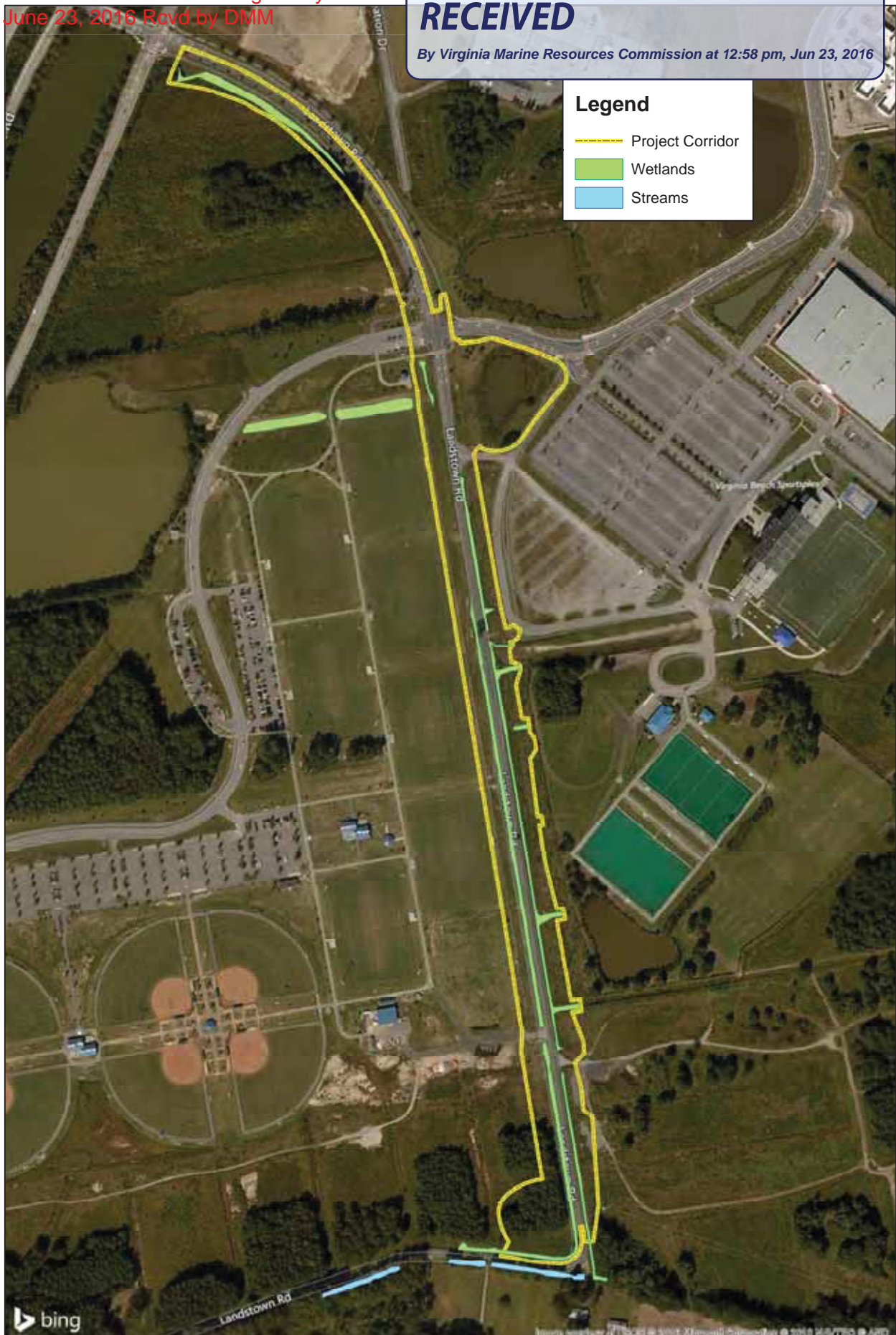
Ph: 757 963 2008
Fax: 757 963 8322

JOINT PERMIT APPLICATION DRAWINGS
PROJECT VICINITY
Landstown Road
VANASSE HANGEN BRUSTLIN, INC
CITY OF VIRGINIA BEACH , VIRGINIA

500250 0 500 1,000 Feet		
N	DATE	SHEET
	5/11/2016	1 OF 13

RECEIVED

By Virginia Marine Resources Commission at 12:58 pm, Jun 23, 2016



1008 Old Virginia Beach Road, Suite 200
Virginia Beach, VA 23513
Ph: 757 963 2008
Fax: 757 963 8322

JOINT PERMIT APPLICATION DRAWINGS
EXISTING CONDITIONS
Landstown Road
VANASSE HANGEN BRUSTLIN, INC
CITY OF VIRGINIA BEACH, VIRGINIA

200 100 0 200 400 Feet

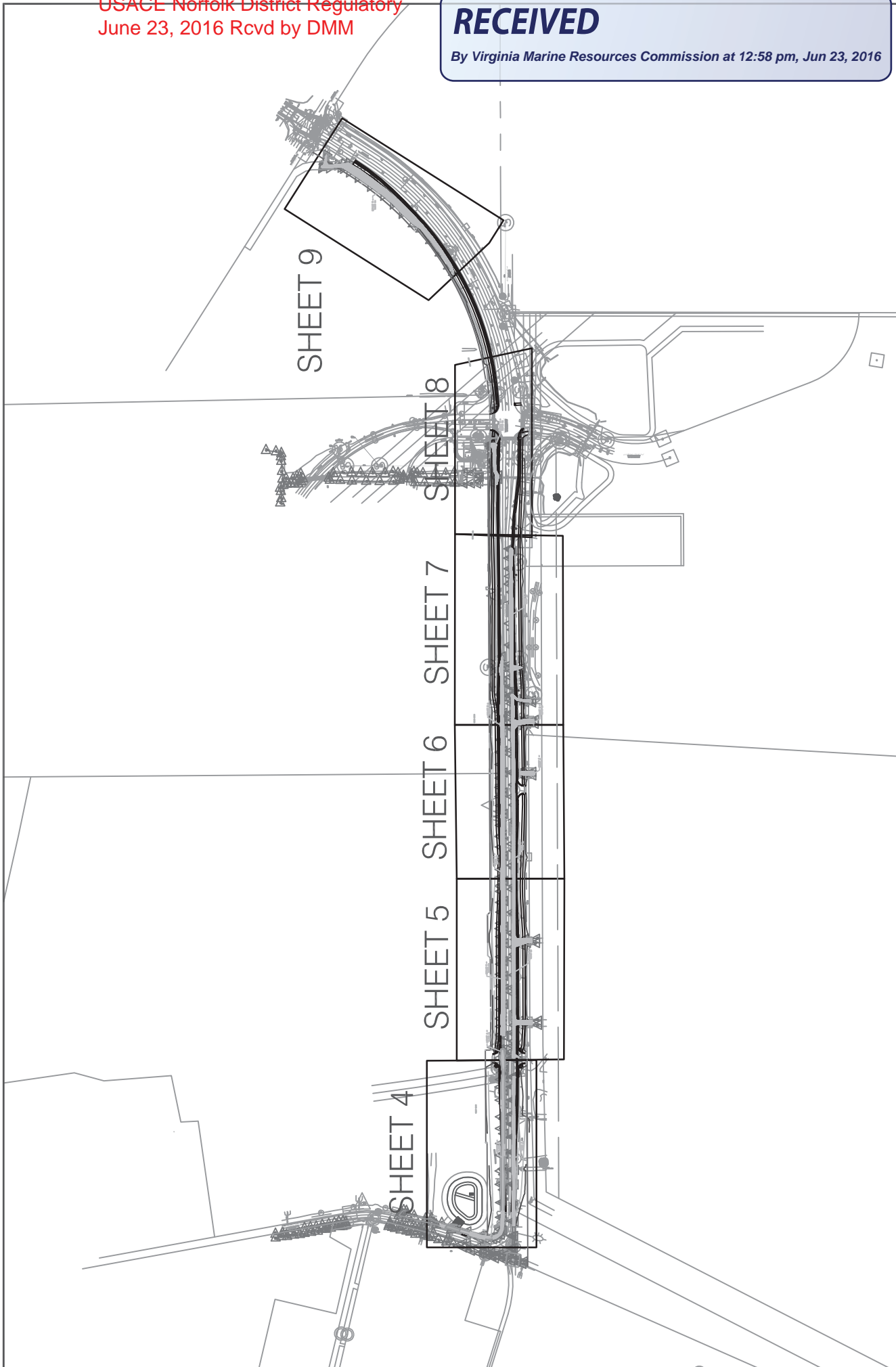


DATE
5/11/2016

SHEET
2 OF 13

RECEIVED

By Virginia Marine Resources Commission at 12:58 pm, Jun 23, 2016



SCALE: 1" = 500'



DATE
5-11-16

SHEET
3 OF 13

JOINT PERMIT APPLICATION DRAWINGS

INDEX SHEET

LANDSTOWN ROAD
VANASSE HANGEN BRUSTLIN, INC
CITY OF VIRGINIA BEACH, VIRGINIA

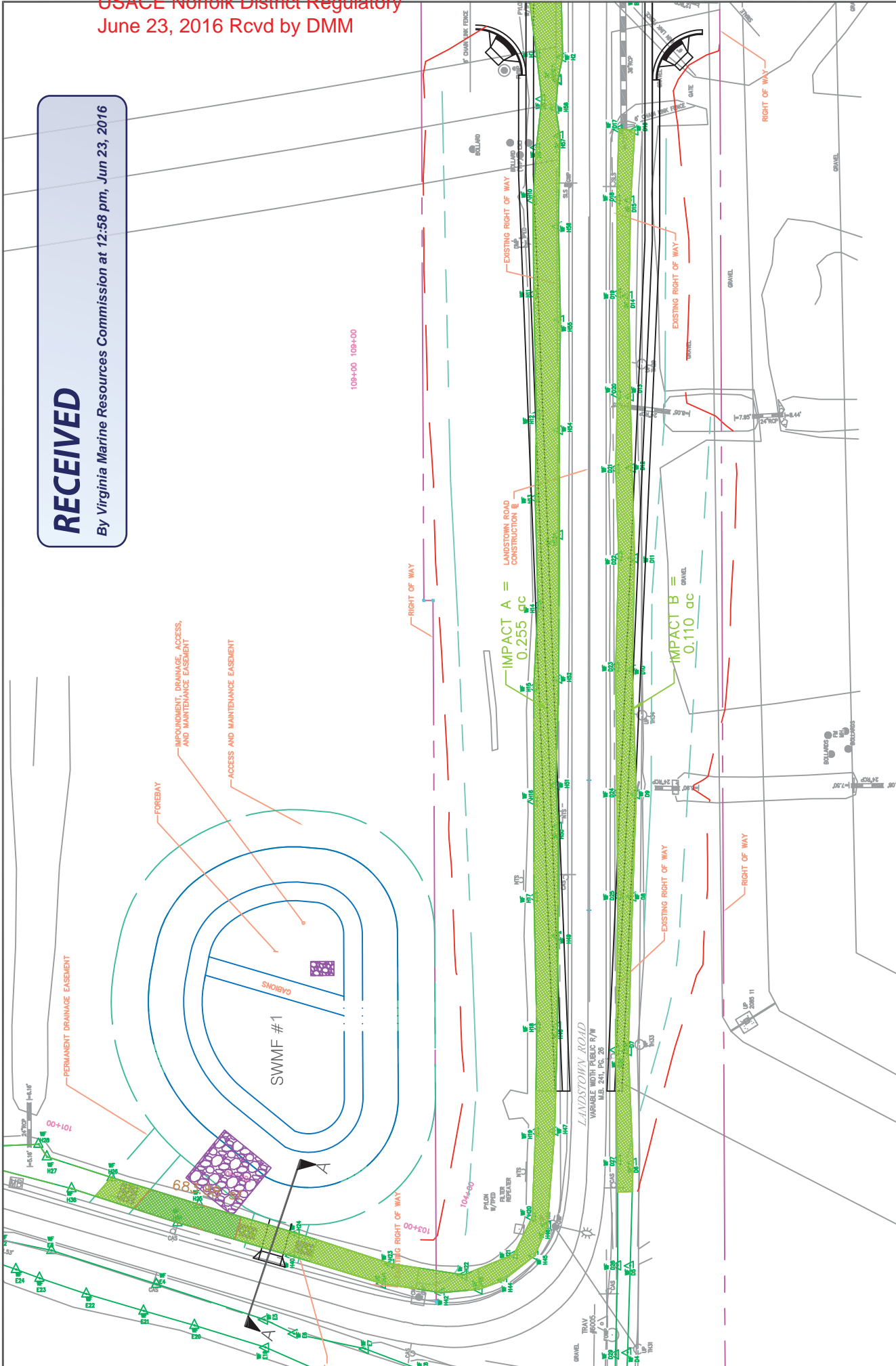
APPLICATION BY:
PURPOSE: PERMIT APPLICATION FOR WETLAND
 IMPACTS
REG WATER BODY:
LONGITUDE:



1008 Old Virginia Beach Rd., Suite 200 Ph: 757 963 2008
Virginia Beach, VA 23451 Fax: 757 963 8322

RECEIVED

By Virginia Marine Resources Commission at 12:58 pm, Jun 23, 2016



SCALE: 1" = 70'

35' 0 35' 70'

DATE 5-11-16

SHEET 4 OF 13

JOINT PERMIT APPLICATION DRAWINGS
WETLAND IMPACTS
 LANDSTOWN ROAD
 VANASSE HANGEN BRUSTLIN, INC
 CITY OF VIRGINIA BEACH, VIRGINIA

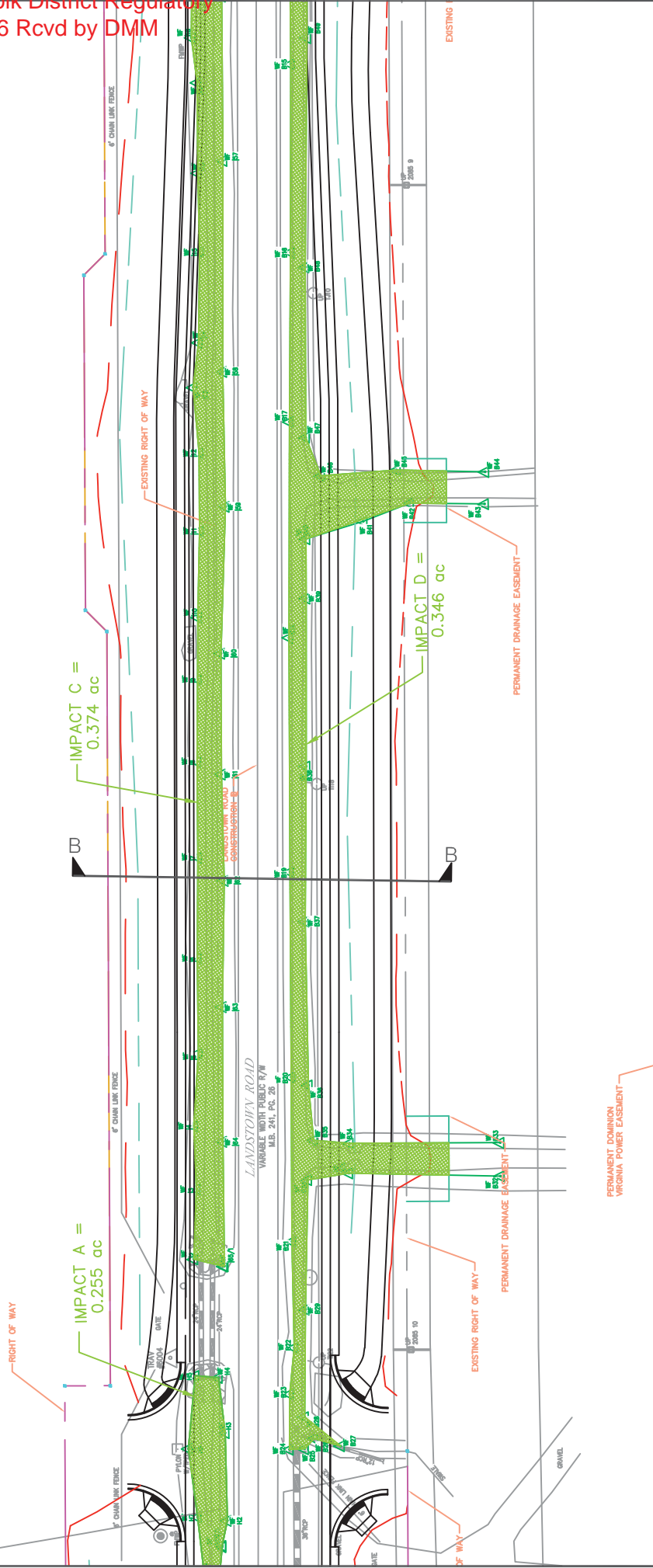
APPLICATION BY:
 PURPOSE: PERMIT APPLICATION FOR WETLAND IMPACTS
 REG WATER BODY:
 LONGITUDE:

Kerr Environmental Services Corp.
 Wetland Resources Engineering | Environmental Consulting

1008 Old Virginia Beach Rd, Suite 200 Ph: 757 963 2008
 Virginia Beach, VA 23451 Fax: 757 963 8322

RECEIVED

By Virginia Marine Resources Commission at 12:58 pm, Jun 23, 2016



SCALE: 1" = 70'

35' 0 35' 70'

DATE 5-11-16

SHEET 5 OF 13

JOINT PERMIT APPLICATION DRAWINGS
WETLAND IMPACTS
LANDSTOWN ROAD
VANASSE HANGEN BRUSTLIN, INC
CITY OF VIRGINIA BEACH, VIRGINIA

APPLICATION BY:
PURPOSE: PERMIT APPLICATION FOR WETLAND IMPACTS
REC'D WATER BODY:
LONGITUDE:

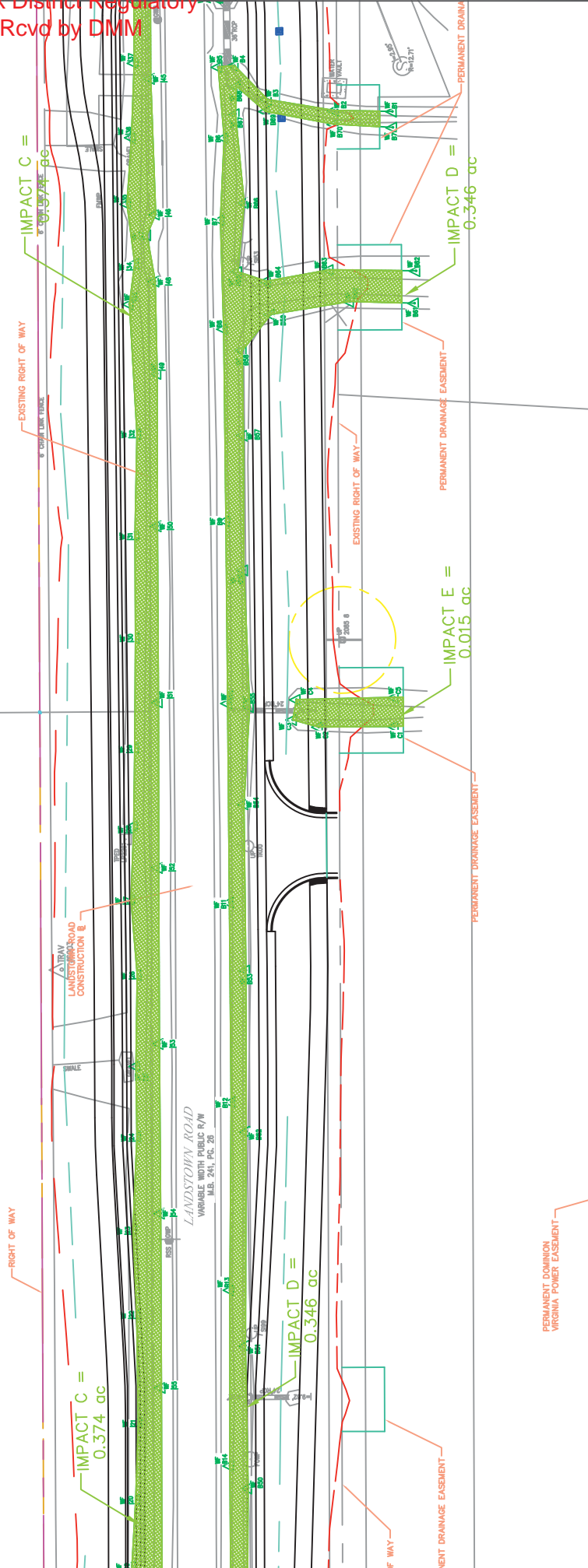
Kerr Environmental Services Corp.
Wetland Resources Engineering | Environmental Consulting

1008 Old Virginia Beach Rd, Suite 200
Virginia Beach, VA 23451

Ph: 757 963 2008
Fax: 757 963 8322

RECEIVED
By Virginia Marine Resources Commission at 12:59 pm, Jun 23, 2016

1244+00 1244+00



SCALE: 1" = 70'

35' 0 35' 70'

DATE 5-11-16 SHEET 6 OF 13

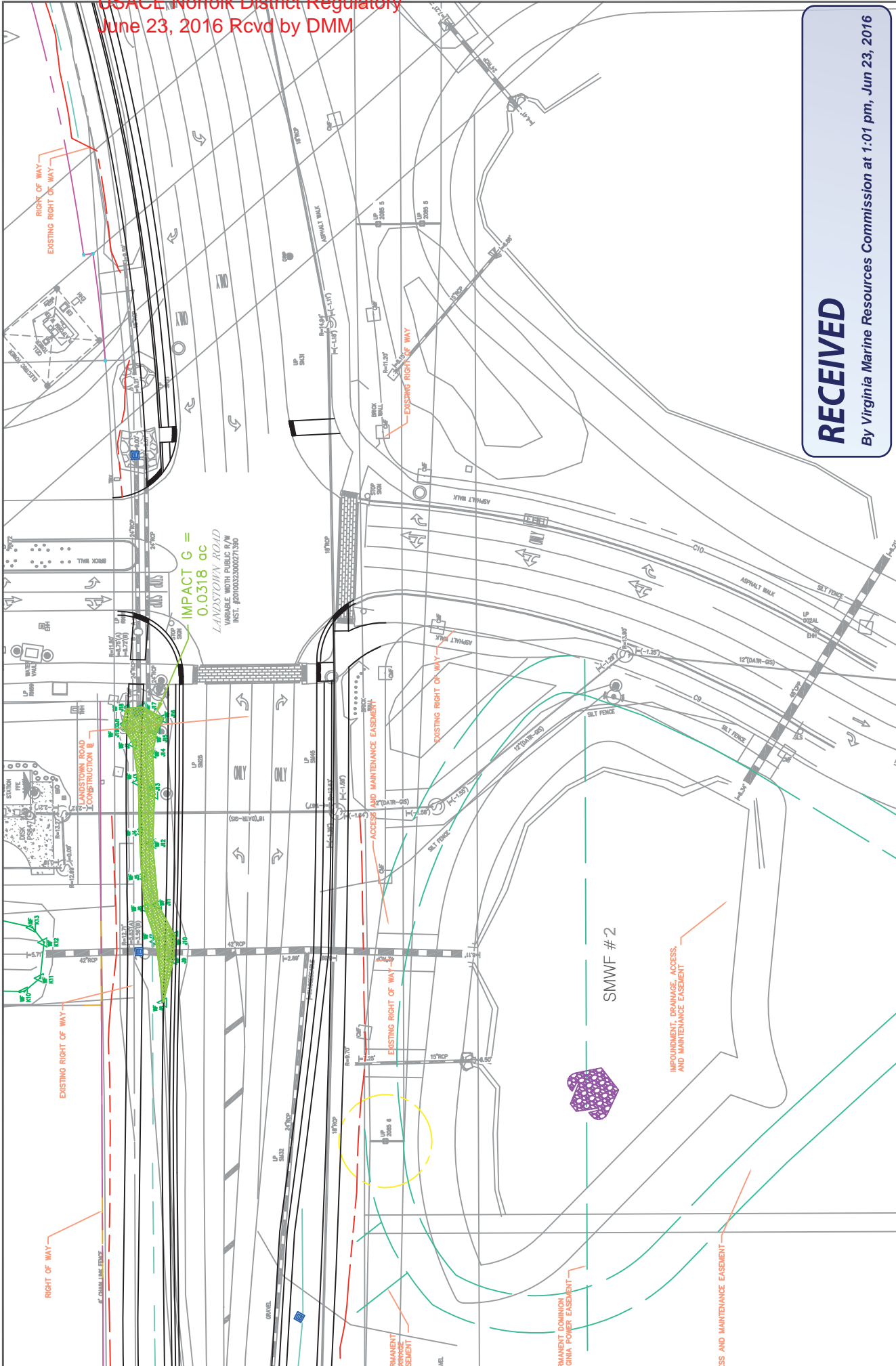
JOINT PERMIT APPLICATION DRAWINGS
WETLAND IMPACTS
LANDSTOWN ROAD
VANASSE HANGEN BRUSTLIN, INC
CITY OF VIRGINIA BEACH, VIRGINIA

APPLICATION BY:
PURPOSE: PERMIT APPLICATION FOR WETLAND IMPACTS
REGC WATER BODY:
LONGITUDE:

Kerr Environmental Services Corp.
Wetland Resources Engineering | Environmental Consulting

1008 Old Virginia Beach Rd, Suite 200 Ph: 757 963 2008
Virginia Beach, VA 23451 Fax: 757 963 8322

USACE Norfolk District Regulatory
 June 23, 2016 Rcvd by DMM



IMPACT G =
 0.0318 ac
 LANDSTOWN ROAD
 VARIAN'S NORTH PUBLIC SWM
 INST. #2010032300027190

RECEIVED
 By Virginia Marine Resources Commission at 1:01 pm, Jun 23, 2016

SCALE: 1" = 70'

DATE: 5-11-16
 SHEET: 8 OF 13

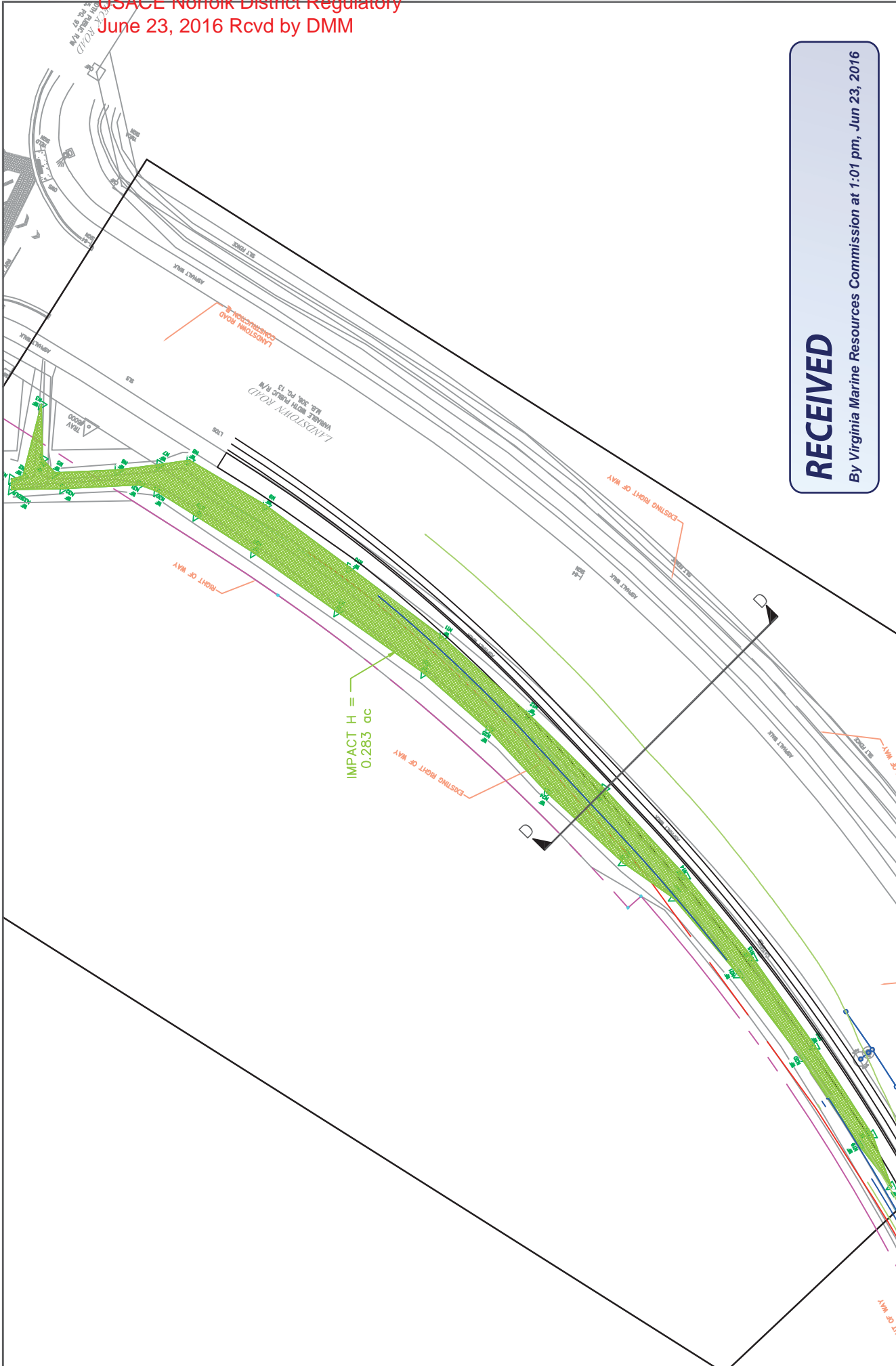
JOINT PERMIT APPLICATION DRAWINGS
WETLAND IMPACTS
 LANDSTOWN ROAD
 VANASSE HANGEN BRUSTLIN, INC
 CITY OF VIRGINIA BEACH, VIRGINIA

APPLICATION BY:
 PURPOSE: PERMIT APPLICATION FOR WETLAND IMPACTS
 RECG WATER BODY:
 LONGITUDE:

Kerr Environmental Services Corp.
 Wetland Resources Engineering | Environmental Consulting

1008 Old Virginia Beach Rd, Suite 200 Ph: 757 963 2008
 Virginia Beach, VA 23451 Fax: 757 963 8322

USACE Norfolk District Regulatory
June 23, 2016 Rcvd by DMM



RECEIVED
 By Virginia Marine Resources Commission at 1:01 pm, Jun 23, 2016

SCALE: 1" = 70'

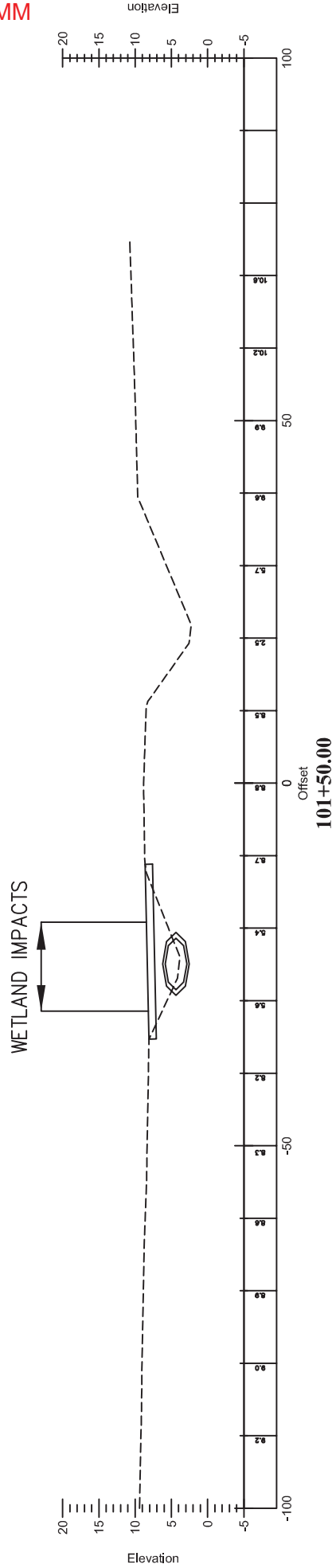
DATE: 5-11-16
 SHEET: 9 OF 13

JOINT PERMIT APPLICATION DRAWINGS
WETLAND IMPACTS
 LANDSTOWN ROAD
 VANASSE HANGEN BRUSTLIN, INC
 CITY OF VIRGINIA BEACH, VIRGINIA

APPLICATION BY:
 PURPOSE: PERMIT APPLICATION FOR WETLAND IMPACTS
 REGD WATER BODY:
 LONGITUDE:

Kerr Environmental Services Corp.
 Wetland Resources Engineering | Environmental Consulting

1008 Old Virginia Beach Rd., Suite 200 Ph: 757 963 2008
 Virginia Beach, VA 23451 Fax: 757 963 8322



RECEIVED
 By Virginia Marine Resources Commission at 1:02 pm, Jun 23, 2016

DATE		SHEET	
5-17-16		10 OF 13	

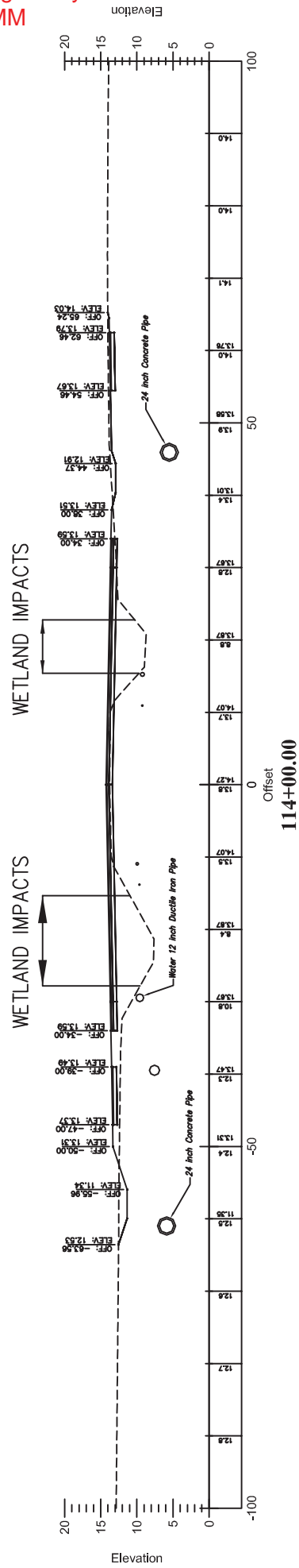
JOINT PERMIT APPLICATION DRAWINGS
CROSS SECTION A - A
 LANDSTOWN ROAD
 VANASSE HANGEN BRUSTLIN, INC
 CITY OF VIRGINIA BEACH, VIRGINIA

APPLICATION BY:
 PURPOSE: PERMIT APPLICATION FOR WETLAND
 IMPACTS
 RECG WATER BODY:
 LONGITUDE:



Kerr Environmental Services Corp.
Wild Resources Engineering | Environmental Consulting

1008 Old Virginia Beach Rd, Suite 200 Ph: 757 963 2008
 Virginia Beach, VA 23451 Fax: 757 963 8322



RECEIVED
By Virginia Marine Resources Commission at 1:02 pm, Jun 23, 2016

DATE	5-17-16	SHEET	11 OF 13
------	---------	-------	----------

JOINT PERMIT APPLICATION DRAWINGS
CROSS SECTION B - B
LANDSTOWN ROAD
VANASSE HANGEN BRUSTLIN, INC
CITY OF VIRGINIA BEACH, VIRGINIA

APPLICATION BY:
PURPOSE: PERMIT APPLICATION FOR WETLAND IMPACTS
REC'D WATER BODY:
LONGITUDE:



1008 Old Virginia Beach Rd, Suite 200
Virginia Beach, VA 23451
Ph: 757 963 2008
Fax: 757 963 8322

